

Product Datasheet

Cytokeratin 8 Antibody (KRT8/899)

NBP2-44941-0.1mg

Unit Size: 0.1 mg

Store at 4C.

www.novusbio.com



technical@novusbio.com

Reviews: 1 Publications: 2

Protocols, Publications, Related Products, Reviews, Research Tools and Images at:
www.novusbio.com/NBP2-44941

Updated 5/9/2021 v.20.1

Earn rewards for product reviews and publications.

Submit a publication at www.novusbio.com/publications

Submit a review at www.novusbio.com/reviews/destination/NBP2-44941



NBP2-44941-0.1mg

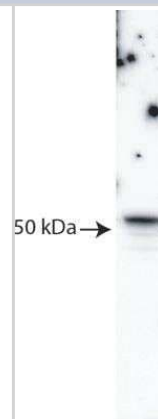
Cytokeratin 8 Antibody (KRT8/899)

Product Information	
Unit Size	0.1 mg
Concentration	0.2 mg/ml
Storage	Store at 4C.
Clonality	Monoclonal
Clone	KRT8/899
Preservative	0.05% Sodium Azide
Isotype	IgM Kappa
Purity	Protein A or G purified
Buffer	PBS, 0.05% BSA
Target Molecular Weight	52.5 kDa
Product Description	
Host	Mouse
Gene ID	3856
Gene Symbol	KRT8
Species	Human, Monkey, Rabbit
Immunogen	Recombinant human KRT8 protein
Product Application Details	
Applications	Western Blot, Simple Western, Flow Cytometry, Immunohistochemistry, Immunohistochemistry-Paraffin, Immunofluorescence
Recommended Dilutions	Western Blot, Simple Western 10 ug/ml, Flow Cytometry 0.5 - 1 ug/million cells in 0.1 mL, Immunohistochemistry, Immunohistochemistry-Paraffin 0.5 - 1.0 ug/mL, Immunofluorescence 1 - 2 ug/mL
Application Notes	In Simple Western only 10 - 15 ul of the recommended dilution is used per data point. Separated by Size. Cytokeratin 8 antibody validated for WB from a verified customer review.

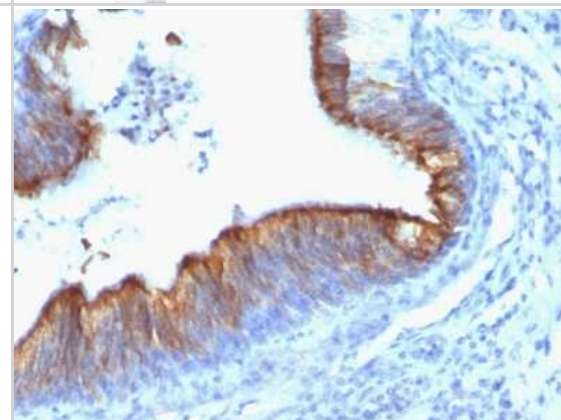


Images

Western Blot: Cytokeratin 8 Antibody (KRT8/899) [NBP2-44941] - Western blot shows lysate of Madin-Darby canine kidney epithelial (MDCK GII) cell line. Nitrocellulose membrane was probed with anti-Cytokeratin 8 (Catalog # NBP2-44941) followed by HRP-conjugated secondary antibody. WB image submitted by a verified customer review.



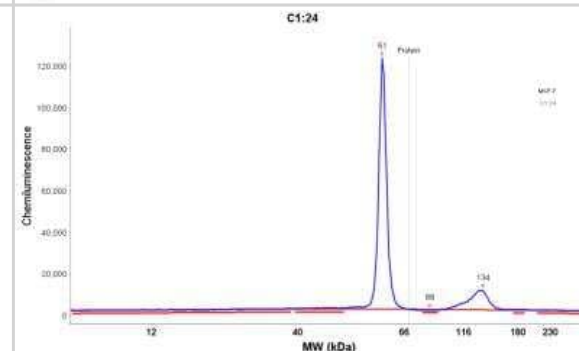
Immunohistochemistry-Paraffin: Cytokeratin 8 Antibody (KRT8/899) [NBP2-44941] - Human Lung Carcinoma stained with Cytokeratin 8 Monoclonal Antibody (KRT8/899).



Simple Western: Cytokeratin 8 Antibody (KRT8/899) [NBP2-44941] - Simple Western lane view shows a specific band for Cytokeratin 8 in 0.2 mg/mL of MCF-7 lysate(s). This experiment was performed under reducing conditions using the 12-230 kDa separation system.



Simple Western: Cytokeratin 8 Antibody (KRT8/899) [NBP2-44941] - Electropherogram image of the corresponding Simple Western lane. Cytokeratin 8 antibody was used at 10 ug/mL dilution of MCF-7 lysates (s) respectively.



Publications

Seong J, Frias-Aldeguer J, Holzmann V et al. Iron Overload via Heme Degradation Epiblast inducers capture mouse trophectoderm stem cells in vitro and pattern blastoids for implantation in utero Cell stem cell 2022-07-07 [PMID: 35803228]

Sozen B, Cox AL, De Jonghe J, et al. Self-Organization of Mouse Stem Cells into an Extended Potential Blastoid Dev. Cell 2019-12-16 [PMID: 31846649]



Novus Biologicals USA

10730 E. Briarwood Avenue
Centennial, CO 80112
USA
Phone: 303.730.1950
Toll Free: 1.888.506.6887
Fax: 303.730.1966
nb-customerservice@bio-techne.com

Bio-Techne Canada

21 Canmotor Ave
Toronto, ON M8Z 4E6
Canada
Phone: 905.827.6400
Toll Free: 855.668.8722
Fax: 905.827.6402
canada.inquires@bio-techne.com

Bio-Techne Ltd

19 Barton Lane
Abingdon Science Park
Abingdon, OX14 3NB, United Kingdom
Phone: (44) (0) 1235 529449
Free Phone: 0800 37 34 15
Fax: (44) (0) 1235 533420
info.EMEA@bio-techne.com

General Contact Information

www.novusbio.com
Technical Support: nb-technical@bio-techne.com
Orders: nb-customerservice@bio-techne.com
General: novus@novusbio.com

Limitations

This product is for research use only and is not approved for use in humans or in clinical diagnosis. Primary Antibodies are guaranteed for 1 year from date of receipt.

For more information on our 100% guarantee, please visit www.novusbio.com/guarantee

Earn gift cards/discounts by submitting a review: www.novusbio.com/reviews/submit/NBP2-44941

Earn gift cards/discounts by submitting a publication using this product:

www.novusbio.com/publications

