

Product Datasheet

CD20 Antibody (L26) NBP2-44743-0.1ml

Unit Size: 0.1 ml

Store at 4C.

www.novusbio.com



technical@novusbio.com

Publications: 3

Protocols, Publications, Related Products, Reviews, Research Tools and Images at:
www.novusbio.com/NBP2-44743

Updated 12/20/2023 v.20.1

Earn rewards for product
reviews and publications.

Submit a publication at www.novusbio.com/publications

Submit a review at www.novusbio.com/reviews/destination/NBP2-44743



NBP2-44743-0.1ml

CD20 Antibody (L26)

Product Information	
Unit Size	0.1 ml
Concentration	0.2 mg/ml
Storage	Store at 4C.
Clonality	Monoclonal
Clone	L26
Preservative	0.05% Sodium Azide
Isotype	IgG2a Kappa
Purity	Protein A or G purified
Buffer	10 mM PBS with 0.05% BSA
Product Description	
Host	Mouse
Gene ID	931
Gene Symbol	MS4A1
Species	Human
Reactivity Notes	Others not known.
Marker	B-Cell Marker
Specificity/Sensitivity	Recognizes a protein of 30-33kDa, which is identified as CD20. Its epitope is located in the cytoplasmic domain of CD20 and was, therefore, ascribed as CD20cy in the 5th Workshop. CD20 is a non-Ig differentiation antigen of B-cells and its expression is restricted to normal and neoplastic B-cells, being absent from all other leukocytes and tissues. CD20 is expressed by pre B-cells and persists during all stages of B-cell maturation but is lost upon terminal differentiation into plasma cells. This MAb can be used for immunophenotyping of leukemia and malignant cells, B lymphocyte detection in peripheral blood and B cell localization in tissues. It reacts with the majority of B-cells present in peripheral blood and lymphoid tissues and their derived lymphomas. In lymphoid tissue, germinal center blasts and B-immunoblasts are particularly reactive. It is a reliable antibody for ascribing a B-cell phenotype in known lymphoid tissues. Rarely, CD20-positive T-cell lymphomas have been reported. Reactivity has also been noted with Reed-Sternberg cells in cases of Hodgkins disease, particularly of lymphocyte predominant type.
Immunogen	Human tonsil B cells
Notes	<p>200ug/ml of antibody purified from Bioreactor Concentrate by Protein A or G. Prepared in 10 mM PBS with 0.05% BSA & 0.05% azide. Also available WITHOUT BSA & azide at 1.0 mg/ml (NBP2-80486).</p> <p>Antibody with azide - store at 2 to 8C. Antibody without azide - store at -20 to -80C. Antibody is stable for 24 months. Non-hazardous.</p>
Product Application Details	
Applications	Western Blot, Flow Cytometry, Immunocytochemistry/ Immunofluorescence, Immunohistochemistry, Immunohistochemistry-Paraffin, Immunofluorescence



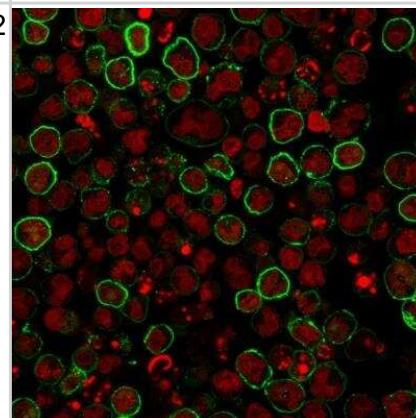
Recommended Dilutions	Western Blot 1-2 ug/ml, Flow Cytometry 0.5-1 ug/million cells, Immunohistochemistry 0.5-1 ug/ml, Immunocytochemistry/ Immunofluorescence 1-2 ug/ml, Immunohistochemistry-Paraffin 1:100-1:200, Immunofluorescence 1:100-1:200
Application Notes	Immunohistology (Formalin-fixed): 0.5-1ug/ml for 30 minutes at RT. Staining of formalin-fixed tissues requires boiling tissue sections in 10mM citrate buffer, pH 6.0, for 10-20 min followed by cooling at RT for 20 minutes. Optimal dilution for a specific application should be determined.

Images

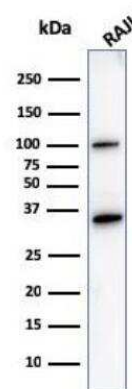
Immunohistochemistry: CD20 Antibody (L26) [NBP2-44743] - CD20 cell staining in involved and uninvolved skin from a patient with systemic sclerosis (SSc). a Cellular infiltrate in involved skin (distal forearm biopsy) from a patient with early anti-Scl-70+ diffuse SSc showing an appreciable number of CD20+ cells in perivascular areas. b Uninvolved skin (buttock biopsy) from the same patient showing the presence of a smaller number of CD20+ cells around blood vessels. Original magnification 400x (a and b). Nuclei were counterstained by hematoxylin. Bottom insets show the infiltrating cells at a lower magnification (200x). Insets at the top of the figures show hematoxylin and eosin (H&E) staining of involved and uninvolved skin (50x). Image collected and cropped by CiteAb from the following publication (<https://arthritis-research.biomedcentral.com/articles/10.1186/s13075-018-1569-0>) licensed under a CC-BY license.



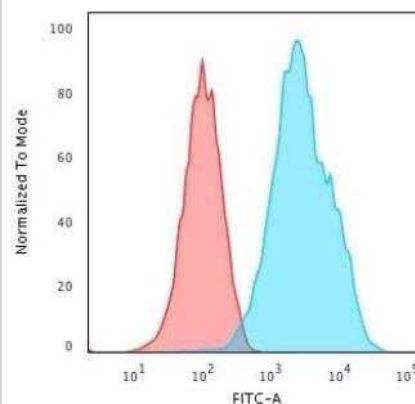
Immunocytochemistry/Immunofluorescence: CD20 Antibody (L26) [NBP2-44743] - Immunofluorescence staining of Raji cells using CD20 Mouse Monoclonal Antibody (L26) followed by goat anti-Mouse IgG conjugated to CF488 (green). Nuclei are stained with Reddot.



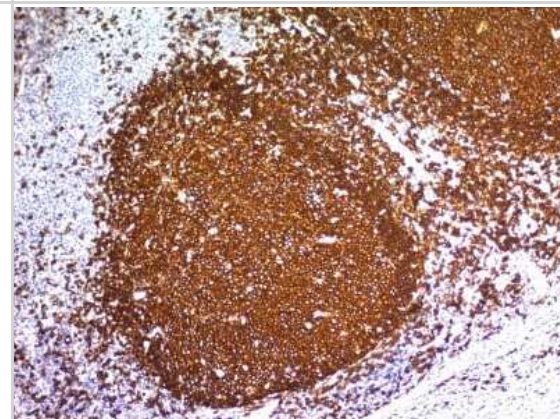
Western Blot: CD20 Antibody (L26) [NBP2-44743] - Western Blot Analysis of Raji cell lysate using CD20 Mouse Monoclonal Antibody (L26).



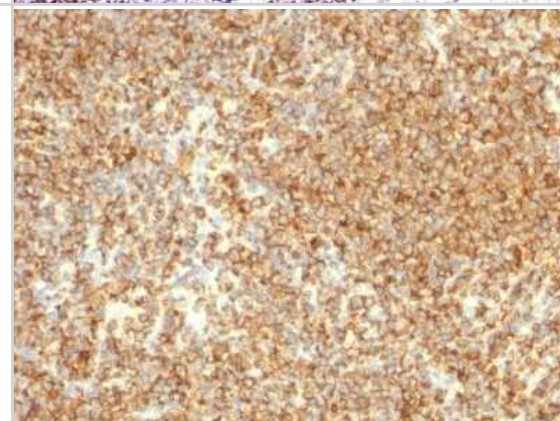
Flow Cytometry: CD20 Antibody (L26) [NBP2-44743] - Cytometric Analysis of Raji cells using CD20 Mouse Monoclonal Antibody (L26) followed by Goat anti-Mouse IgG-CF488 (Blue); Isotype Control (Red).



Immunohistochemistry-Paraffin: CD20 Antibody (L26) [NBP2-44743] - Human Tonsil stained with CD20 Monoclonal Antibody (L26)



Immunohistochemistry-Paraffin: CD20 Antibody (L26) [NBP2-44743] - Human Lymphoma stained with CD20 Monoclonal Antibody (L26)



Publications

Ukita M, Hamanishi J, Yoshitomi H et al. CXCL13-producing CD4+ T cells accumulate in early phase of tertiary lymphoid structures in ovarian cancer JCI insight 2022-05-12 [PMID: 35552285] (IF/IHC, Human)

Lande R, Pietraforte I, Mennella A et al. Complementary Effects of Carbamylated and Citrullinated LL37 in Autoimmunity and Inflammation in Systemic Lupus Erythematosus Int J Mol Sci 2021-02-10 [PMID: 33562078]

Details:

Citation using the Alexa Fluor 594 version of this antibody.

Bosello S, Angelucci C, Lama G et al. Characterization of inflammatory cell infiltrate of scleroderma skin: B cells and skin score progression. Arthritis Res. Ther. 2018-04-18 [PMID: 29669578] (IF/IHC, Human)



Novus Biologicals USA

10730 E. Briarwood Avenue
Centennial, CO 80112
USA
Phone: 303.730.1950
Toll Free: 1.888.506.6887
Fax: 303.730.1966
nb-customerservice@bio-techne.com

Bio-Techne Canada

21 Canmotor Ave
Toronto, ON M8Z 4E6
Canada
Phone: 905.827.6400
Toll Free: 855.668.8722
Fax: 905.827.6402
canada.inquires@bio-techne.com

Bio-Techne Ltd

19 Barton Lane
Abingdon Science Park
Abingdon, OX14 3NB, United Kingdom
Phone: (44) (0) 1235 529449
Free Phone: 0800 37 34 15
Fax: (44) (0) 1235 533420
info.EMEA@bio-techne.com

General Contact Information

www.novusbio.com
Technical Support: nb-technical@bio-techne.com
Orders: nb-customerservice@bio-techne.com
General: novus@novusbio.com

Limitations

This product is for research use only and is not approved for use in humans or in clinical diagnosis. Primary Antibodies are guaranteed for 1 year from date of receipt.

For more information on our 100% guarantee, please visit www.novusbio.com/guarantee

Earn gift cards/discounts by submitting a review: www.novusbio.com/reviews/submit/NBP2-44743

Earn gift cards/discounts by submitting a publication using this product:
www.novusbio.com/publications

