

Product Datasheet

SOX10 Antibody (SOX10/991 + SOX10/1074) NBP2-44476-0.1mg

Unit Size: 0.1 mg

Store at 4C.

www.novusbio.com



technical@novusbio.com

Protocols, Publications, Related Products, Reviews, Research Tools and Images at:
www.novusbio.com/NBP2-44476

Updated 5/9/2021 v.20.1

Earn rewards for product
reviews and publications.

Submit a publication at www.novusbio.com/publications

Submit a review at www.novusbio.com/reviews/destination/NBP2-44476



NBP2-44476-0.1mg

SOX10 Antibody (SOX10/991 + SOX10/1074)

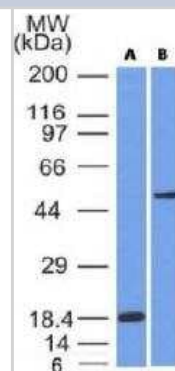
| Product Information | |
|------------------------------------|---|
| Unit Size | 0.1 mg |
| Concentration | 0.2 mg/ml |
| Storage | Store at 4C. |
| Clonality | Monoclonal |
| Clone | SOX10/991 + SOX10/1074 |
| Preservative | 0.05% Sodium Azide |
| Isotype | IgG2b Kappa |
| Purity | Protein A or G purified |
| Buffer | 10mM PBS and 0.05% BSA |
| Target Molecular Weight | 54 kDa |
| Product Description | |
| Host | Mouse |
| Gene ID | 6663 |
| Gene Symbol | SOX10 |
| Species | Human |
| Marker | Melanoma Marker |
| Specificity/Sensitivity | Recognizes a protein of ~55kDa, identified as SOX10. This MAb is highly specific and does not cross-react with other members of the SOX-family. SOX genes comprise a family of genes that are related to the mammalian sex-determining gene SRY. These genes similarly contain sequences that encode for the HMG-box domain, which is responsible for the sequence-specific DNA-binding activity. SOX-10 is a sensitive marker of melanoma, including conventional, spindle, and desmoplastic subtypes. It is expressed by metastatic melanomas and nodal capsular nevus in sentinel lymph nodes, but not by other lymph node components such as dendritic cells, which usually express S100 protein. Commonly used melanoma markers, such as anti-HMB-45 and anti-Melan-A, are poorly expressed in desmoplastic melanomas while SOX-10 is moderately to strongly expressed in desmoplastic melanomas. SOX-10 is considered as a very reliable marker for recognizing residual desmoplastic melanomas. In normal tissues, it is expressed in Schwann cells, melanocytes, and myoepithelial cells of salivary, bronchial and mammary glands. SOX-10 expression is also observed in mast cells. |
| Immunogen | Recombinant fragment (aa 115-269) of human SOX10 protein with hexahistidine tag |
| Product Application Details | |
| Applications | Western Blot, Flow Cytometry, Immunohistochemistry, Immunohistochemistry-Paraffin, Immunofluorescence |
| Recommended Dilutions | Western Blot 0.5 - 1.0 ug/ml, Flow Cytometry 0.5 - 1 ug/million cells in 0.1 ml, Immunohistochemistry, Immunohistochemistry-Paraffin 0.5 - 1.0 ug/ml, Immunofluorescence 1 - 2 ug/ml |

Application Notes

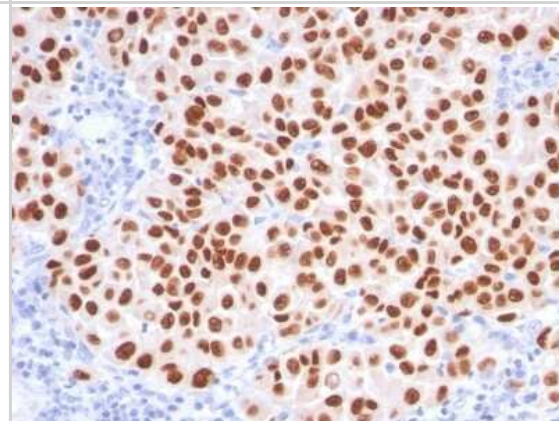
Hu-chromosome location: 22q13.1
 Molecular weight of antigen: 49-58kDa
 Immunohistochemistry-Paraffin 0.5 - 1 ug/ml for 30 minutes at RT; Staining of formalin-fixed tissues requires boiling tissue sections in 10mM citrate buffer, pH 6.0, for 10 - 20 min followed by cooling at RT for 20 minutes. The 7mL size is a pre-diluted size and no additional dilutions are required before using this item for the intended application.

Images

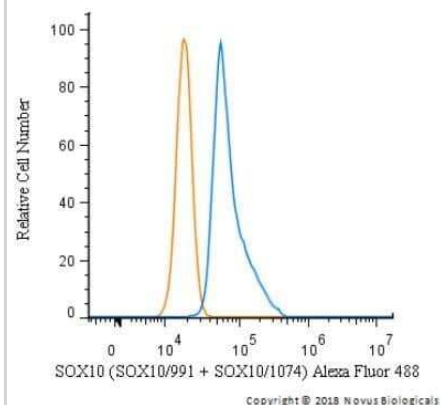
Western Blot: SOX10 Antibody (SOX10/991 + SOX10/1074) [NBP2-44476] - (A) Recombinant protein (B) A375 Cell Lysate using SOX10 Monoclonal Antibody (SOX10/991 + SOX10/1074).



Immunohistochemistry-Paraffin: SOX10 Antibody (SOX10/991 + SOX10/1074) [NBP2-44476] - Human Melanoma stained with SOX10 Monoclonal Antibody (SOX10/991 + SOX10/1074).



Flow Cytometry: SOX10 Antibody (SOX10/991 + SOX10/1074) [NBP2-44476] - Flow Cytometry: SOX10 Antibody (SOX10/991 + SOX10/1074) [Alexa Fluor® 488] [NBP2-47709AF488] - An intracellular stain was performed on SK-MEL-28 cells with SOX10 Antibody (SOX10/991 + SOX10/1074) NBP2-47709AF488 (blue) and a matched isotype control (orange). Cells were fixed with 4% PFA and then permeabilized with 0.1% saponin. Cells were incubated in an antibody dilution of 5 ug/mL for 30 minutes at room temperature. Both antibodies were conjugated to Alexa Fluor 488. Image using the Alexa Fluor 488 form of this antibody.





Novus Biologicals USA

10730 E. Briarwood Avenue
Centennial, CO 80112
USA
Phone: 303.730.1950
Toll Free: 1.888.506.6887
Fax: 303.730.1966
nb-customerservice@bio-techne.com

Bio-Techne Canada

21 Canmotor Ave
Toronto, ON M8Z 4E6
Canada
Phone: 905.827.6400
Toll Free: 855.668.8722
Fax: 905.827.6402
canada.inquires@bio-techne.com

Bio-Techne Ltd

19 Barton Lane
Abingdon Science Park
Abingdon, OX14 3NB, United Kingdom
Phone: (44) (0) 1235 529449
Free Phone: 0800 37 34 15
Fax: (44) (0) 1235 533420
info.EMEA@bio-techne.com

General Contact Information

www.novusbio.com
Technical Support: nb-technical@bio-
techne.com
Orders: nb-customerservice@bio-techne.com
General: novus@novusbio.com

Limitations

This product is for research use only and is not approved for use in humans or in clinical diagnosis. Primary Antibodies are guaranteed for 1 year from date of receipt.

For more information on our 100% guarantee, please visit www.novusbio.com/guarantee

Earn gift cards/discounts by submitting a review: www.novusbio.com/reviews/submit/NBP2-44476

Earn gift cards/discounts by submitting a publication using this product:
www.novusbio.com/publications

