

Product Datasheet

Cytokeratin, pan Antibody (KRTL/1077 + KRTH/1076) NBP2-44367-0.1mg

Unit Size: 0.1 mg

Store at 4C.

www.novusbio.com



technical@novusbio.com

Protocols, Publications, Related Products, Reviews, Research Tools and Images at:
www.novusbio.com/NBP2-44367

Updated 10/23/2024 v.20.1

Earn rewards for product
reviews and publications.

Submit a publication at www.novusbio.com/publications

Submit a review at www.novusbio.com/reviews/destination/NBP2-44367



NBP2-44367-0.1mg

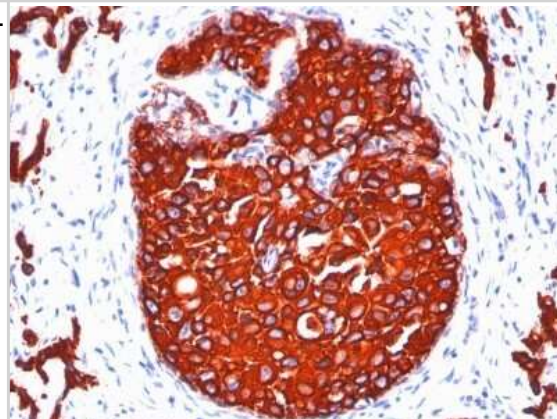
Cytokeratin, pan Antibody (KRTL/1077 + KRTH/1076)

| Product Information | |
|-----------------------------|--|
| Unit Size | 0.1 mg |
| Concentration | 0.2 mg/ml |
| Storage | Store at 4C. |
| Clonality | Monoclonal |
| Clone | KRTL/1077 + KRTH/1076 |
| Preservative | 0.05% Sodium Azide |
| Isotype | IgG1 Kappa/IgG1 Kappa |
| Purity | Protein A or G purified |
| Buffer | 10 mM PBS with 0.05% BSA |
| Product Description | |
| Description | <p>200ug/ml of antibody purified from Bioreactor Concentrate by Protein A or G. Prepared in 10 mM PBS with 0.05% BSA & 0.05% azide. Also available WITHOUT BSA & azide at 1.0 mg/ml. (NBP3-11443)</p> <p>Antibody with azide - store at 2 to 8C. Antibody without azide - store at -20 to -80C.</p> |
| Host | Mouse |
| Gene ID | 3848 |
| Gene Symbol | KRT1 |
| Species | Human, Rat |
| Reactivity Notes | Shows broad species reactivity. |
| Marker | Epithelial Marker |
| Specificity/Sensitivity | <p>Twenty human keratins are resolved with two-dimensional gel electrophoresis into acidic (pI 6.0) subfamilies. This antibody cocktail recognizes acidic (Type I or LMW) and basic (Type II or HMW) cytokeratins, which include CK1, CK3, CK4, CK5, CK6, CK8, CK10, CK14, CK15, CK16, and CK19. Many studies have shown the usefulness of keratins as markers in cancer research and tumor diagnosis. KRTL/KRTH is a broad spectrum anti pan-cytokeratin antibody cocktail, which differentiates epithelial tumors from non-epithelial tumors e.g. squamous vs. adenocarcinoma of the lung, liver carcinoma, breast cancer, and esophageal cancer. It has been used to characterize the source of various neoplasms and to study the distribution of cytokeratin containing cells in epithelia during normal development and during the development of epithelial neoplasms. This antibody stains cytokeratins present in normal and abnormal human tissues and has shown high sensitivity in the recognition of epithelial cells and carcinomas.</p> |
| Immunogen | Recombinant human KRT77 and KRT76 protein |
| Product Application Details | |
| Applications | Immunohistochemistry, Immunohistochemistry-Paraffin |
| Recommended Dilutions | Immunohistochemistry, Immunohistochemistry-Paraffin 0.1-0.2 ug/ml |
| Application Notes | <p>Immunohistochemistry (Formalin-fixed): 0.1-0.2ug/ml for 30 min at RT. Staining of formalin-fixed tissues requires heating tissue sections in 10mM Tris with 1mM EDTA, pH 9.0, for 45 min at 95C followed by cooling at RT for 20 minutes. Optimal dilution for a specific application should be determined.</p> |



Images

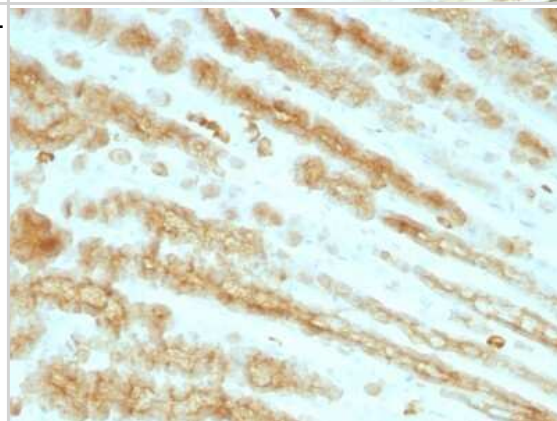
Immunohistochemistry-Paraffin: Cytokeratin, pan Antibody (KRTL/1077 + KRTH/1076) [NBP2-44367] - Human Breast Carcinoma stained with Cytokeratin, pan Monoclonal Antibody cocktail (KRTL/1077 + KRTH/1076).



Immunohistochemistry-Paraffin: Cytokeratin, pan Antibody (KRTL/1077 + KRTH/1076) [NBP2-44367] - Rat Oviduct with Cytokeratin, pan Monoclonal Antibody cocktail (KRTL/1077 + KRTH/1076).



Immunohistochemistry-Paraffin: Cytokeratin, pan Antibody (KRTL/1077 + KRTH/1076) [NBP2-44367] - Rat Stomach stained with Cytokeratin, pan Monoclonal Antibody cocktail (KRTL/1077 + KRTH/1076).





Novus Biologicals USA

10730 E. Briarwood Avenue
Centennial, CO 80112
USA
Phone: 303.730.1950
Toll Free: 1.888.506.6887
Fax: 303.730.1966
nb-customerservice@bio-techne.com

Bio-Techne Canada

21 Canmotor Ave
Toronto, ON M8Z 4E6
Canada
Phone: 905.827.6400
Toll Free: 855.668.8722
Fax: 905.827.6402
canada.inquires@bio-techne.com

Bio-Techne Ltd

19 Barton Lane
Abingdon Science Park
Abingdon, OX14 3NB, United Kingdom
Phone: (44) (0) 1235 529449
Free Phone: 0800 37 34 15
Fax: (44) (0) 1235 533420
info.EMEA@bio-techne.com

General Contact Information

www.novusbio.com
Technical Support: nb-technical@bio-
techne.com
Orders: nb-customerservice@bio-techne.com
General: novus@novusbio.com

Products Related to NBP2-44367-0.1mg

| | |
|---------|---|
| HAF007 | Goat anti-Mouse IgG Secondary Antibody [HRP] |
| NB720-B | Rabbit anti-Mouse IgG (H+L) Secondary Antibody [Biotin] |
| DNST0 | Endostatin [HRP] |
| MAB1455 | Albumin Antibody (188835) [Unconjugated] - Serum |

Limitations

This product is for research use only and is not approved for use in humans or in clinical diagnosis. Primary Antibodies are guaranteed for 1 year from date of receipt.

For more information on our 100% guarantee, please visit www.novusbio.com/guarantee

Earn gift cards/discounts by submitting a review: www.novusbio.com/reviews/submit/NBP2-44367

Earn gift cards/discounts by submitting a publication using this product:
www.novusbio.com/publications

