

# Product Datasheet

## HGFR/c-MET Antibody (1G7NB) - BSA Free NBP2-44306

Unit Size: 0.1 mg

Store at 4C short term. Aliquot and store at -20C long term. Avoid freeze-thaw cycles.

[www.novusbio.com](http://www.novusbio.com)



[technical@novusbio.com](mailto:technical@novusbio.com)

**Reviews: 1 Publications: 3**

Protocols, Publications, Related Products, Reviews, Research Tools and Images at:  
[www.novusbio.com/NBP2-44306](http://www.novusbio.com/NBP2-44306)

Updated 8/20/2024 v.20.1

**Earn rewards for product  
reviews and publications.**

Submit a publication at [www.novusbio.com/publications](http://www.novusbio.com/publications)

Submit a review at [www.novusbio.com/reviews/destination/NBP2-44306](http://www.novusbio.com/reviews/destination/NBP2-44306)



**NBP2-44306**

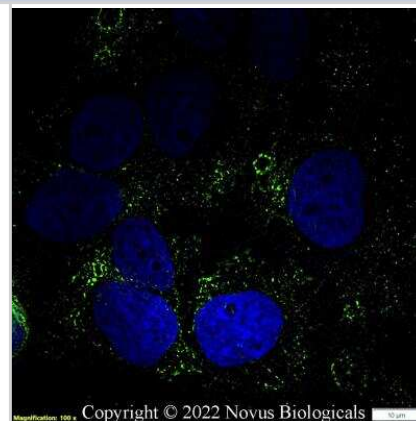
HGFR/c-MET Antibody (1G7NB) - BSA Free

Product Information	
Unit Size	0.1 mg
Concentration	1.0 mg/ml
Storage	Store at 4C short term. Aliquot and store at -20C long term. Avoid freeze-thaw cycles.
Clonality	Monoclonal
Clone	1G7NB
Preservative	0.02% Sodium Azide
Isotype	IgG1 Kappa
Purity	Protein G purified
Buffer	PBS
Product Description	
Host	Mouse
Gene ID	4233
Gene Symbol	MET
Species	Human
Immunogen	Partial recombinant human c-Met protein (between amino acids 170-400) [UniProt P08581].
Product Application Details	
Applications	Flow Cytometry, Immunocytochemistry/ Immunofluorescence, Immunohistochemistry, Immunohistochemistry-Paraffin
Recommended Dilutions	Flow Cytometry, Immunohistochemistry 5-10 ug/ml, Immunocytochemistry/ Immunofluorescence 1:100, Immunohistochemistry-Paraffin 5-10 ug/ml
Application Notes	There have been variable results with this antibody in Western blot.

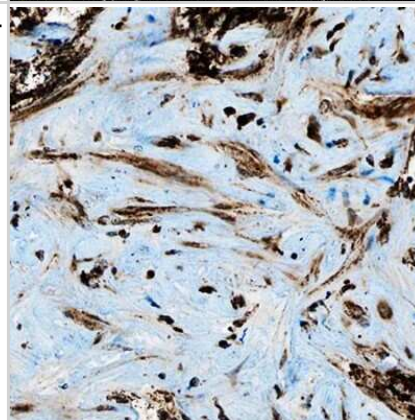


## Images

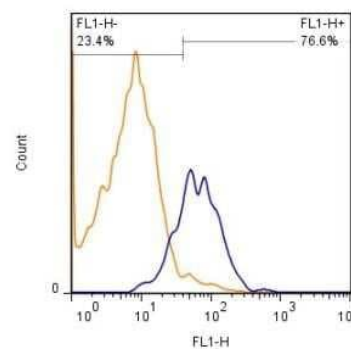
**Immunocytochemistry/Immunofluorescence: HGFR/c-MET Antibody (1G7NB) [NBP2-44306]** - A431 cells were fixed in 4% paraformaldehyde for 10 minutes and permeabilized in 0.05% Triton X-100 in PBS for 5 minutes. The cells were incubated with HGFR/c-MET Antibody [1G7NB] (NBP2-44306) at 1 ug/ml overnight at 4C and detected with an anti-mouse Dylight 488 (Green) at a 1:1000 dilution for 60 minutes. Nuclei were counterstained with DAPI (Blue). Cells were imaged using a 100X objective and digitally deconvolved.



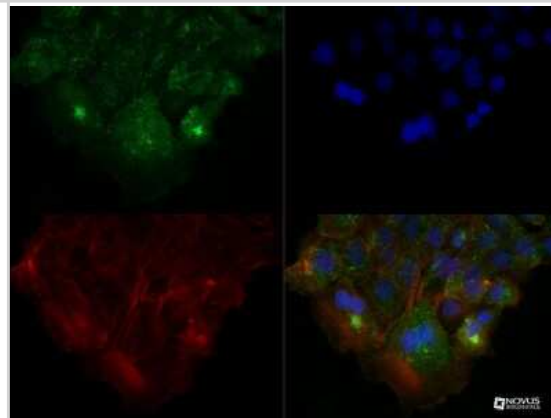
**Immunohistochemistry-Paraffin: HGFR/c-MET Antibody (1G7NB) [NBP2-44306]** - Analysis of HGF R/c-Met (1G7NB) in human liver cancer.



**Flow Cytometry: HGFR/c-MET Antibody (1G7NB) [NBP2-44306]** - c-MET antibody was tested in HeLa cells ( $1 \times 10^6$  cells/ml). After fixation and permeabilization, cells were stained using the anti-c-MET antibody (clone 1G7NB) at a 1:1000 dilution. Signal was detected using a Goat anti-Mouse Dylight 488 secondary (blue peak). Shown with secondary control (orange peak). Data was acquired on BD FACSCalibur. Image using the Azide Free format of this antibody.



**Immunocytochemistry/Immunofluorescence: HGFR/c-MET Antibody (1G7NB) [NBP2-44306]** - A431 cells were fixed for 10 minutes using 10% formalin and then permeabilized for 5 minutes using 1X TBS + 0.5% Triton X-100. The cells were incubated with c-MET (1G7NB) at a 1:100 dilution overnight at 4 degrees Celsius and detected with DyLight 488 (Green). Actin was detected using Phalloidin 568 (Red) at a 1:200 dilution. Nuclei were detected with DAPI (Blue). Cells were imaged using a 40X objective.



## Publications

Morgan RD, Ferreras C, Peset I et al. c-MET/VEGFR-2 co-localisation impacts on survival following bevacizumab therapy in epithelial ovarian cancer: an exploratory biomarker study of the phase 3 ICON7 trial BMC medicine 2022-02-11 [PMID: 35144591] (IHC-P, Human)

Karabacak NM, Zheng Y, Dubash TD et al. Differential kinase activity across prostate tumor compartments defines sensitivity to target inhibition Cancer research 2022-01-19 [PMID: 35045985]

Karabacak N, Zheng Y, Dubash T, et al. Single cell proteomics of tumor compartments identifies differential kinase activities defining sensitivity to mTOR-PI3-kinase inhibition bioRxiv 2021-01-10 (Mouse)



## Procedures

### **Immunocytochemistry/Immunofluorescence Protocol for HGF R/c-MET Antibody (NBP2-44306)**

HGFR/c-MET Antibody (1G7NB):

Immunocytochemistry Protocol

Culture cells to appropriate density in 35 mm culture dishes or 6-well plates.

1. Remove culture medium and add 10% formalin to the dish. Fix at room temperature for 30 minutes.
2. Remove the formalin and add ice cold methanol. Incubate for 5-10 minutes.
3. Remove methanol and add washing solution (i.e. PBS). Be sure to not let the specimen dry out. Wash three times for 10 minutes.
4. To block nonspecific antibody binding incubate in 10% normal goat serum from 1 hour to overnight at room temperature.
5. Add primary antibody at appropriate dilution and incubate at room temperature from 2 hours to overnight at room temperature.
6. Remove primary antibody and replace with washing solution. Wash three times for 10 minutes.
7. Add secondary antibody at appropriate dilution. Incubate for 1 hour at room temperature.
8. Remove antibody and replace with wash solution, then wash for 10 minutes. Add Hoechst 33258 to wash solution at 1:25,000 and incubate for 10 minutes. Wash a third time for 10 minutes.
9. Cells can be viewed directly after washing. The plates can also be stored in PBS containing Azide covered in Parafilm (TM). Cells can also be cover-slipped using Fluoromount, with appropriate sealing.

\*The above information is only intended as a guide. The researcher should determine what protocol best meets their needs. Please follow safe laboratory procedures.





### **Novus Biologicals USA**

10730 E. Briarwood Avenue  
Centennial, CO 80112  
USA  
Phone: 303.730.1950  
Toll Free: 1.888.506.6887  
Fax: 303.730.1966  
nb-customerservice@bio-techne.com

### **Bio-Techne Canada**

21 Canmotor Ave  
Toronto, ON M8Z 4E6  
Canada  
Phone: 905.827.6400  
Toll Free: 855.668.8722  
Fax: 905.827.6402  
canada.inquires@bio-techne.com

### **Bio-Techne Ltd**

19 Barton Lane  
Abingdon Science Park  
Abingdon, OX14 3NB, United Kingdom  
Phone: (44) (0) 1235 529449  
Free Phone: 0800 37 34 15  
Fax: (44) (0) 1235 533420  
info.EMEA@bio-techne.com

### **General Contact Information**

www.novusbio.com  
Technical Support: nb-technical@bio-  
techne.com  
Orders: nb-customerservice@bio-techne.com  
General: novus@novusbio.com

### **Limitations**

This product is for research use only and is not approved for use in humans or in clinical diagnosis. Primary Antibodies are guaranteed for 1 year from date of receipt.

For more information on our 100% guarantee, please visit [www.novusbio.com/guarantee](http://www.novusbio.com/guarantee)

Earn gift cards/discounts by submitting a review: [www.novusbio.com/reviews/submit/NBP2-44306](http://www.novusbio.com/reviews/submit/NBP2-44306)

Earn gift cards/discounts by submitting a publication using this product:  
[www.novusbio.com/publications](http://www.novusbio.com/publications)

