

Product Datasheet

Human Serum Albumin Antibody [FITC] NBP2-44227

Unit Size: 1 mg

Store lyophilized antibody at 4C in the dark. Aliquot reconstituted liquid and store at -20C. Avoid freeze-thaw cycles.

www.novusbio.com



technical@novusbio.com

Protocols, Publications, Related Products, Reviews, Research Tools and Images at:
www.novusbio.com/NBP2-44227

Updated 8/15/2023 v.20.1

Earn rewards for product
reviews and publications.

Submit a publication at www.novusbio.com/publications

Submit a review at www.novusbio.com/reviews/destination/NBP2-44227



NBP2-44227

Human Serum Albumin Antibody [FITC]

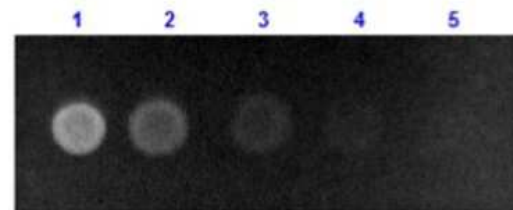
Product Information	
Unit Size	1 mg
Concentration	LYOPH mg/ml
Storage	Store lyophilized antibody at 4C in the dark. Aliquot reconstituted liquid and store at -20C. Avoid freeze-thaw cycles.
Clonality	Polyclonal
Preservative	0.01% Sodium Azide
Reconstitution Instructions	Reconstitute with 1.0 ml deionized water (or equivalent)
Isotype	IgG
Conjugate	FITC
Purity	Immunogen affinity purified
Buffer	Lyophilized from 0.02 M Potassium Phosphate, 0.15 M Sodium Chloride, pH 7.2, 10 mg/ml Polyethylene Glycol (PEG-8000)

Product Description	
Description	<p>Store vial at 4C prior to restoration. For extended storage aliquot contents and freeze at -20C or below. Avoid cycles of freezing and thawing. Centrifuge product if not completely clear after standing at room temperature. This product is stable for several weeks at 4C as an undiluted liquid. Dilute only prior to immediate use.</p> <p>This product was prepared from monospecific antiserum by immunoaffinity chromatography using purified human serum albumin. Assay by immunoelectrophoresis resulted in a single precipitin arc against anti-fluorescein and anti-Rabbit Serum. Analysis by SDS-PAGE was used to determine that this preparation is substantially free of aggregates and shows a banding pattern consistent with purified Rabbit IgG.</p>
Host	Rabbit
Gene ID	213
Gene Symbol	ALB
Species	Human
Reactivity Notes	Cross reactivity against Human Serum Albumin from other tissues and species may occur but has not been specifically determined
Specificity/Sensitivity	Cross reactivity against Albumin from other tissues and species may occur but has not been specifically determined.
Immunogen	Albumin (Human Serum) (Uniprot: P02768)

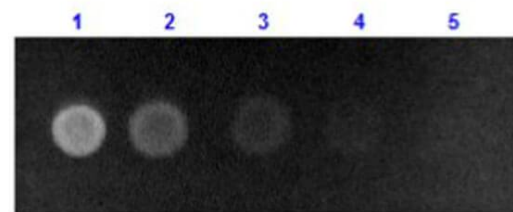
Product Application Details	
Applications	Western Blot, Dot Blot, Fluorophore-linked immunosorbent assay, Immunocytochemistry/ Immunofluorescence, Immunohistochemistry, Immunohistochemistry-Paraffin
Recommended Dilutions	Western Blot, Immunohistochemistry 1:20 - 1:50, Immunocytochemistry/ Immunofluorescence 1:10-1:500, Immunohistochemistry-Paraffin 1:20-1:50, Dot Blot, Fluorophore-linked immunosorbent assay 1:100-1:2000
Application Notes	This product has been tested by dot blot and is designed for immunofluorescence microscopy, fluorescence based plate assays (FLISA) and fluorescent western blotting. This product is also suitable for multiplex analysis, including multicolor imaging, utilizing various commercial platforms.

Images

Dot Blot: Human Serum Albumin Antibody [FITC] [NBP2-44227] - Dot Blot results of Rabbit Human Serum Albumin antibody [FITC]. Dots are Human Serum Albumin: (1) 100ng, (2) 33.3ng, (3) 11.1ng, (4) 3.70ng, (5) 1.23ng. Primary Antibody: none. Secondary Antibody: Rabbit Anti-Human Serum Albumin Antibody FITC at 1ug/mL in 1% Fish Gel 1hr RT. Imaged with BioRad ChemiDoc, Fluorescein filter.



Dot Blot results of Rabbit Human Serum Albumin Antibody [FITC]. Dots are Human Serum Albumin: (1) 100ng, (2) 33.3ng, (3) 11.1ng, (4) 3.70ng, (5) 1.23ng. Primary Antibody: none. Secondary Antibody: Rabbit Anti-Human Serum Albumin Antibody FITC at 1ug/mL in 1% Fish Gel 1hr RT. Imaged with BioRad ChemiDoc, Fluorescein filter.





Novus Biologicals USA

10730 E. Briarwood Avenue
Centennial, CO 80112
USA
Phone: 303.730.1950
Toll Free: 1.888.506.6887
Fax: 303.730.1966
nb-customerservice@bio-techne.com

Bio-Techne Canada

21 Canmotor Ave
Toronto, ON M8Z 4E6
Canada
Phone: 905.827.6400
Toll Free: 855.668.8722
Fax: 905.827.6402
canada.inquires@bio-techne.com

Bio-Techne Ltd

19 Barton Lane
Abingdon Science Park
Abingdon, OX14 3NB, United Kingdom
Phone: (44) (0) 1235 529449
Free Phone: 0800 37 34 15
Fax: (44) (0) 1235 533420
info.EMEA@bio-techne.com

General Contact Information

www.novusbio.com
Technical Support: nb-technical@bio-
techne.com
Orders: nb-customerservice@bio-techne.com
General: novus@novusbio.com

Limitations

This product is for research use only and is not approved for use in humans or in clinical diagnosis. Primary Antibodies are guaranteed for 1 year from date of receipt.

For more information on our 100% guarantee, please visit www.novusbio.com/guarantee

Earn gift cards/discounts by submitting a review: www.novusbio.com/reviews/submit/NBP2-44227

Earn gift cards/discounts by submitting a publication using this product:
www.novusbio.com/publications

