

Product Datasheet

MCT1/SLC16A1 Antibody (14612) - Azide and BSA Free NBP2-43838

Unit Size: 0.1 ml

Aliquot and store at -20C or -80C. Avoid freeze-thaw cycles.

www.novusbio.com



technical@novusbio.com

Protocols, Publications, Related Products, Reviews, Research Tools and Images at:
www.novusbio.com/NBP2-43838

Updated 9/9/2025 v.20.1

Earn rewards for product
reviews and publications.

Submit a publication at www.novusbio.com/publications

Submit a review at www.novusbio.com/reviews/destination/NBP2-43838



NBP2-43838

MCT1/SLC16A1 Antibody (14612) - Azide and BSA Free

Product Information	
Unit Size	0.1 ml
Concentration	Concentrations vary lot to lot. See vial label for concentration. If unlisted please contact technical services.
Storage	Aliquot and store at -20C or -80C. Avoid freeze-thaw cycles.
Clonality	Monoclonal
Clone	14612
Preservative	No Preservative
Isotype	IgG2b
Purity	Protein G purified
Buffer	PBS, 20% Glycerol
Target Molecular Weight	54 kDa

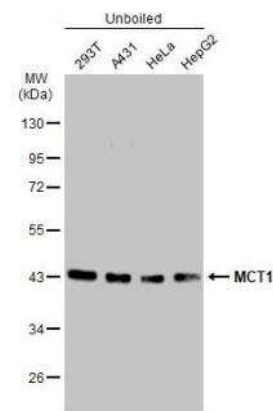
Product Description	
Description	Novus Biologicals Mouse MCT1/SLC16A1 Antibody (14612) - Azide and BSA Free (NBP2-43838) is a monoclonal antibody validated for use in IHC, WB and ICC/IF. All Novus Biologicals antibodies are covered by our 100% guarantee.
Host	Mouse
Gene ID	6566
Gene Symbol	SLC16A1
Species	Human
Immunogen	Carrier-protein conjugated synthetic peptide encompassing a sequence within the C-terminus region of human MCT1/SLC16A1. The exact sequence is proprietary.

Product Application Details	
Applications	Western Blot, Immunohistochemistry-Paraffin, Immunocytochemistry/Immunofluorescence, Immunohistochemistry
Recommended Dilutions	Western Blot 1:500-1:3000, Immunohistochemistry 1:100-1:1000, Immunocytochemistry/ Immunofluorescence 1:100-1:1000, Immunohistochemistry-Paraffin 1:100-1:1000

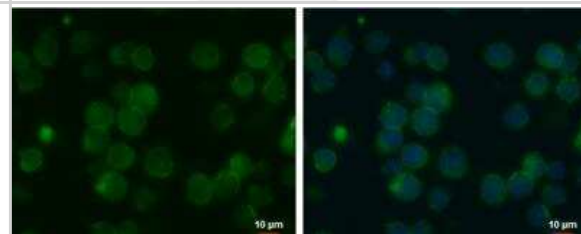


Images

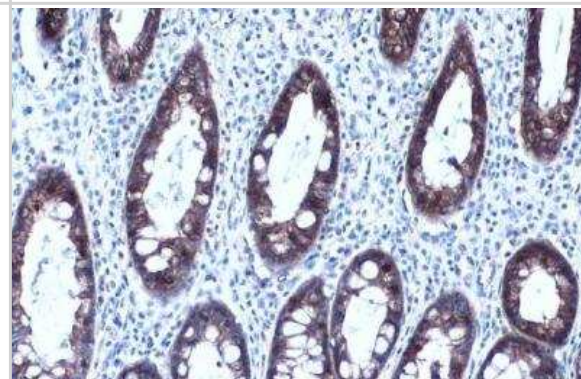
Western Blot: MCT1/SLC16A1 Antibody (14612) [NBP2-43838] - Unboiled various whole cell extracts (30 ug) were separated by 10% SDS-PAGE, and the membrane was blotted with MCT1 antibody [14612] diluted at 1:1000. The HRP-conjugated anti-mouse IgG antibody (NBP2-19382) was used to detect the primary antibody, and the signal was developed with Trident ECL plus-Enhanced.



Immunocytochemistry/Immunofluorescence: MCT1/SLC16A1 Antibody (14612) [NBP2-43838] - Analysis of Sample: THP-1 cells were fixed in 4% paraformaldehyde at RT for 15 min. Green: MCT1 protein stained by MCT1 antibody [14612] diluted at 1:500. Blue: Hoechst 33342 staining.



Immunohistochemistry-Paraffin: MCT1/SLC16A1 Antibody (14612) [NBP2-43838] - Human colon. MCT1 stained by MCT1 antibody [14612] diluted at 1:500. Antigen Retrieval: Citrate buffer, pH 6.0, 15 min.





Novus Biologicals USA

10730 E. Briarwood Avenue
Centennial, CO 80112
USA
Phone: 303.730.1950
Toll Free: 1.888.506.6887
Fax: 303.730.1966
nb-customerservice@bio-techne.com

Bio-Techne Canada

21 Canmotor Ave
Toronto, ON M8Z 4E6
Canada
Phone: 905.827.6400
Toll Free: 855.668.8722
Fax: 905.827.6402
canada.inquires@bio-techne.com

Bio-Techne Ltd

19 Barton Lane
Abingdon Science Park
Abingdon, OX14 3NB, United Kingdom
Phone: (44) (0) 1235 529449
Free Phone: 0800 37 34 15
Fax: (44) (0) 1235 533420
info.EMEA@bio-techne.com

General Contact Information

www.novusbio.com
Technical Support: nb-technical@bio-techne.com
Orders: nb-customerservice@bio-techne.com
General: novus@novusbio.com

Products Related to NBP2-43838

HAF007	Goat anti-Mouse IgG Secondary Antibody [HRP]
NB720-B	Rabbit anti-Mouse IgG (H+L) Secondary Antibody [Biotin]
NBP2-27231	Mouse IgG2b Isotype Control (MPC-11)
NBP1-59656PEP	MCT1/SLC16A1 Antibody Blocking Peptide

Limitations

This product is for research use only and is not approved for use in humans or in clinical diagnosis. Primary Antibodies are guaranteed for 1 year from date of receipt.

For more information on our 100% guarantee, please visit www.novusbio.com/guarantee

Earn gift cards/discounts by submitting a review: www.novusbio.com/reviews/submit/NBP2-43838

Earn gift cards/discounts by submitting a publication using this product:
www.novusbio.com/publications

