

# Product Datasheet

## Craniofacial Development Protein 1 Antibody (12411) NBP2-43760

Unit Size: 0.1 ml

Aliquot and store at -20C or -80C. Avoid freeze-thaw cycles.

[www.novusbio.com](http://www.novusbio.com)



[technical@novusbio.com](mailto:technical@novusbio.com)

Protocols, Publications, Related Products, Reviews, Research Tools and Images at:  
[www.novusbio.com/NBP2-43760](http://www.novusbio.com/NBP2-43760)

Updated 11/30/2022 v.20.1

Earn rewards for product  
reviews and publications.

Submit a publication at [www.novusbio.com/publications](http://www.novusbio.com/publications)

Submit a review at [www.novusbio.com/reviews/destination/NBP2-43760](http://www.novusbio.com/reviews/destination/NBP2-43760)



**NBP2-43760****Craniofacial Development Protein 1 Antibody (12411)****Product Information**

<b>Unit Size</b>	0.1 ml
<b>Concentration</b>	Concentrations vary lot to lot. See vial label for concentration. If unlisted please contact technical services.
<b>Storage</b>	Aliquot and store at -20C or -80C. Avoid freeze-thaw cycles.
<b>Clonality</b>	Monoclonal
<b>Clone</b>	12411
<b>Preservative</b>	No Preservative
<b>Isotype</b>	IgG1
<b>Purity</b>	Protein G purified
<b>Buffer</b>	PBS

**Product Description**

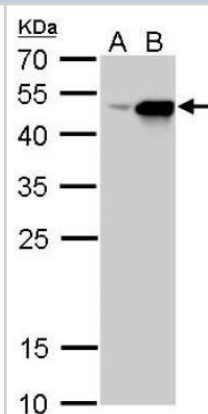
<b>Host</b>	Mouse
<b>Gene ID</b>	10428
<b>Gene Symbol</b>	CFDP1
<b>Species</b>	Human, Mouse
<b>Immunogen</b>	Recombinant protein encompassing a sequence within the center region of human CFDP1. The exact sequence is proprietary.

**Product Application Details**

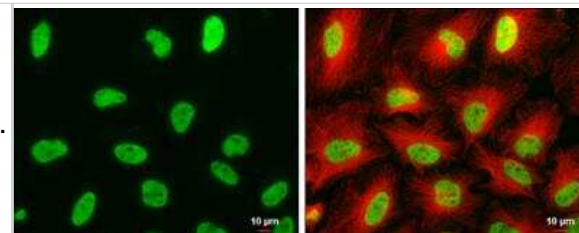
<b>Applications</b>	Western Blot, Immunocytochemistry/Immunofluorescence, Immunohistochemistry-Frozen, Immunohistochemistry-Paraffin
<b>Recommended Dilutions</b>	Western Blot 1:1000-1:10000, Immunocytochemistry/Immunofluorescence 1:100-1:1000, Immunohistochemistry-Paraffin 1:100-1:1000, Immunohistochemistry-Frozen 1:100-1:1000

**Images**

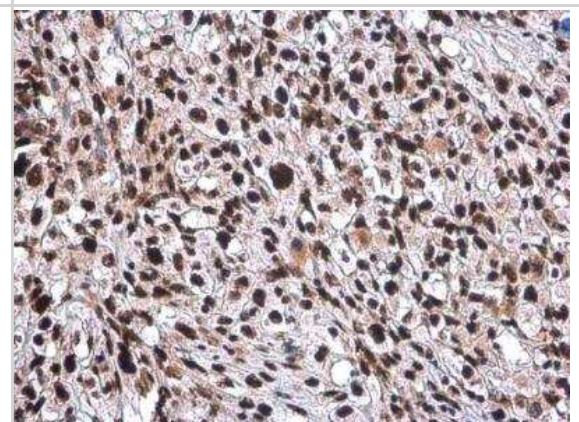
Western Blot: Craniofacial Development Protein 1 Antibody (12411) [NBP2-43760] - Analysis of A. 5 ug 293T whole cell lysate/extract B. 5 ug whole cell lysate/extract of human CFDP1-transfected 293T cells 12 % SDS-PAGE CFDP1 antibody [12411] dilution: 1:5000.



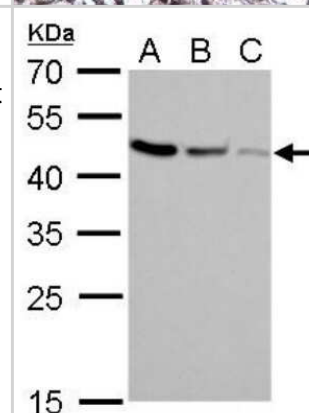
**Immunocytochemistry/Immunofluorescence: Craniofacial Development Protein 1 Antibody (12411) [NBP2-43760] - CFDP1 Antibody (12411)** detects CFDP1 protein at nucleus by immunofluorescent analysis. Sample: HeLa cells were fixed in 4% paraformaldehyde at RT for 15 min. Green: CFDP1 stained by CFDP1 antibody (12411) diluted at 1:500. Red: alpha Tubulin 4a, a cytoskeleton marker, stained by alpha Tubulin 4a antibody diluted at 1:500. Scale bar= 10um.



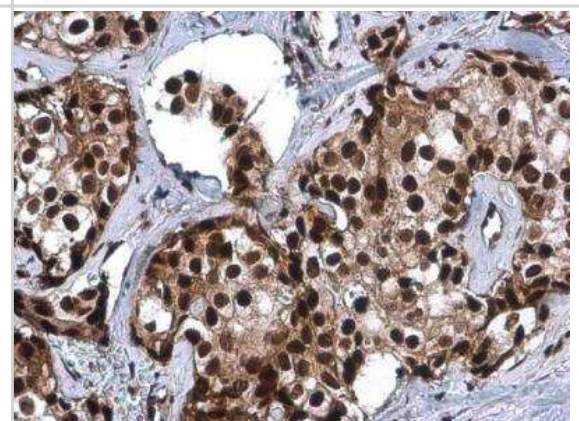
**Immunohistochemistry-Paraffin: Craniofacial Development Protein 1 Antibody (12411) [NBP2-43760] - CFDP1 antibody (12411)** detects CFDP1 protein at nucleus by immunohistochemical analysis. Sample: Paraffin-embedded human ovarian cancer. CFDP1 stained by CFDP1 antibody (12411) diluted at 1:1000.



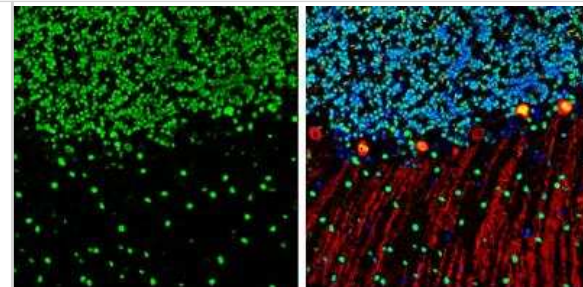
**Western Blot: Craniofacial Development Protein 1 Antibody (12411) [NBP2-43760] - Analysis of A. 30 ug 293T whole cell lysate/extract B. 30 ug A431 whole cell lysate/extract C. 30 ug HeLa whole cell lysate/extract** 12 % SDS-PAGE CFDP1 antibody [12411] dilution: 1:1000



**Immunohistochemistry-Paraffin: Craniofacial Development Protein 1 Antibody (12411) [NBP2-43760] - CFDP1 Antibody [GT12411]** detects CFDP1 protein at nucleus by immunohistochemical analysis. Sample: Paraffin-embedded human breast carcinoma. CFDP1 stained by CFDP1 Antibody (12411) diluted at 1:1000.



Immunohistochemistry-Frozen: Craniofacial Development Protein 1 Antibody (12411) [NBP2-43760] - CFDP1 Antibody (12411) detects CFDP1 protein by immunohistochemical analysis. Sample: Frozen-sectioned mouse cerebellum. Green: CFDP1 stained by CFDP1 antibody (12411) diluted at 1:250. Red: Calbindin, stained by Calbindin antibody diluted at 1:500. Blue: Fluoroshield with DAPI.





### **Novus Biologicals USA**

10730 E. Briarwood Avenue  
Centennial, CO 80112  
USA

Phone: 303.730.1950  
Toll Free: 1.888.506.6887  
Fax: 303.730.1966  
novus@novusbio.com

### **Bio-Techne Canada**

21 Canmotor Ave  
Toronto, ON M8Z 4E6  
Canada

Phone: 905.827.6400  
Toll Free: 855.668.8722  
Fax: 905.827.6402  
canada.inquires@bio-techne.com

### **Bio-Techne Ltd**

19 Barton Lane  
Abingdon Science Park  
Abingdon, OX14 3NB, United Kingdom  
Phone: (44) (0) 1235 529449  
Free Phone: 0800 37 34 15  
Fax: (44) (0) 1235 533420  
info.EMEA@bio-techne.com

### **General Contact Information**

www.novusbio.com  
Technical Support: technical@novusbio.com  
Orders: orders@novusbio.com  
General: novus@novusbio.com

### **Limitations**

This product is for research use only and is not approved for use in humans or in clinical diagnosis. Primary Antibodies are guaranteed for 1 year from date of receipt.

For more information on our 100% guarantee, please visit [www.novusbio.com/guarantee](http://www.novusbio.com/guarantee)

Earn gift cards/discounts by submitting a review: [www.novusbio.com/reviews/submit/NBP2-43760](http://www.novusbio.com/reviews/submit/NBP2-43760)

Earn gift cards/discounts by submitting a publication using this product:  
[www.novusbio.com/publications](http://www.novusbio.com/publications)

