

# Product Datasheet

## **Pancreatic Polypeptide/PP Antibody (6512) - Azide and BSA Free** **NBP2-43741**

Unit Size: 0.1 ml

Aliquot and store at -20C or -80C. Avoid freeze-thaw cycles.

[www.novusbio.com](http://www.novusbio.com)



[technical@novusbio.com](mailto:technical@novusbio.com)

Protocols, Publications, Related Products, Reviews, Research Tools and Images at:  
[www.novusbio.com/NBP2-43741](http://www.novusbio.com/NBP2-43741)

Updated 2/23/2025 v.20.1

Earn rewards for product reviews and publications.

Submit a publication at [www.novusbio.com/publications](http://www.novusbio.com/publications)

Submit a review at [www.novusbio.com/reviews/destination/NBP2-43741](http://www.novusbio.com/reviews/destination/NBP2-43741)



**NBP2-43741**

Pancreatic Polypeptide/PP Antibody (6512) - Azide and BSA Free

Product Information	
Unit Size	0.1 ml
Concentration	Concentrations vary lot to lot. See vial label for concentration. If unlisted please contact technical services.
Storage	Aliquot and store at -20C or -80C. Avoid freeze-thaw cycles.
Clonality	Monoclonal
Clone	6512
Preservative	No Preservative
Isotype	IgG2b
Purity	Protein G purified
Buffer	PBS
Target Molecular Weight	10 kDa

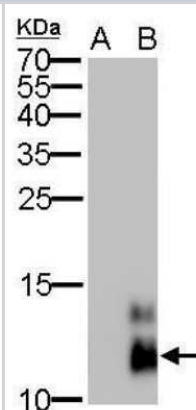
Product Description	
Host	Mouse
Gene ID	5539
Gene Symbol	PPY
Species	Human, Mouse
Immunogen	Carrier-protein conjugated synthetic peptide encompassing a sequence within the center region of human Pancreatic Polypeptide/PP. The exact sequence is proprietary.

Product Application Details	
Applications	Western Blot, Immunocytochemistry/ Immunofluorescence, Immunohistochemistry-Paraffin
Recommended Dilutions	Western Blot 1:1000-1:10000, Immunocytochemistry/ Immunofluorescence 1:100-1:1000, Immunohistochemistry-Paraffin 1:100-1:1000

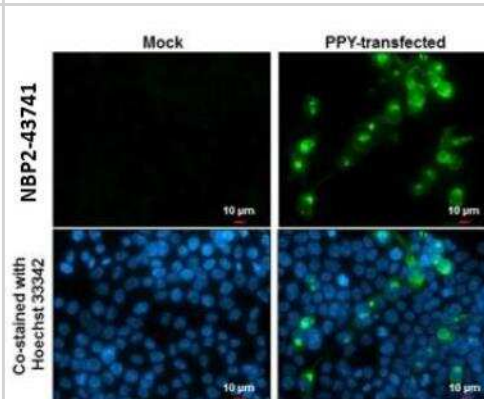


## Images

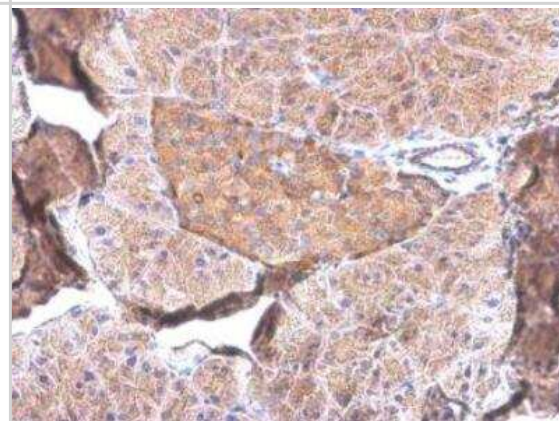
Western Blot: Pancreatic Polypeptide/PP Antibody (6512) [NBP2-43741]  
- Analysis of A. 30 ug 293T whole cell lysate/extract B. 30 ug whole cell lysate/extract of human PPY-transfected 293T cells 15 % SDS-PAGE  
Pancreatic polypeptide antibody [6512] dilution: 1:5000.



Immunocytochemistry/Immunofluorescence: Pancreatic Polypeptide/PP Antibody (6512) [NBP2-43741] - Pancreatic Polypeptide antibody detects Pancreatic Polypeptide protein at cytoplasm by immunofluorescent analysis. Sample: Mock and transfected 293T cells were fixed in 4% paraformaldehyde at RT for 15 min. Green: Pancreatic Polypeptide stained by Pancreatic Polypeptide antibody diluted at 1:2000. Blue: Hoechst 33342 staining. Scale bar= 10um.



Immunohistochemistry-Paraffin: Pancreatic Polypeptide/PP Antibody (6512) [NBP2-43741] - Pancreatic Polypeptide antibody detects Pancreatic Polypeptide protein at cytoplasm by immunohistochemical analysis. Sample: Paraffin-embedded mouse pancreas. Pancreatic Polypeptide stained by Pancreatic Polypeptide antibody diluted at 1:500. Antigen Retrieval: Citrate buffer, pH 6.0, 15 min





### **Novus Biologicals USA**

10730 E. Briarwood Avenue  
Centennial, CO 80112  
USA  
Phone: 303.730.1950  
Toll Free: 1.888.506.6887  
Fax: 303.730.1966  
nb-customerservice@bio-techne.com

### **Bio-Techne Canada**

21 Canmotor Ave  
Toronto, ON M8Z 4E6  
Canada  
Phone: 905.827.6400  
Toll Free: 855.668.8722  
Fax: 905.827.6402  
canada.inquires@bio-techne.com

### **Bio-Techne Ltd**

19 Barton Lane  
Abingdon Science Park  
Abingdon, OX14 3NB, United Kingdom  
Phone: (44) (0) 1235 529449  
Free Phone: 0800 37 34 15  
Fax: (44) (0) 1235 533420  
info.EMEA@bio-techne.com

### **General Contact Information**

[www.novusbio.com](http://www.novusbio.com)  
Technical Support: nb-technical@bio-techne.com  
Orders: nb-customerservice@bio-techne.com  
General: novus@novusbio.com

### **Products Related to NBP2-43741**

---

HAF007	Goat anti-Mouse IgG Secondary Antibody [HRP]
NB720-B	Rabbit anti-Mouse IgG (H+L) Secondary Antibody [Biotin]
NBP2-27231	Mouse IgG2b Isotype Control (MPC-11)
H00005539-P01-10ug	Recombinant Human Pancreatic Polypeptide/PP GST (N-Term) Protein

---

### **Limitations**

This product is for research use only and is not approved for use in humans or in clinical diagnosis. Primary Antibodies are guaranteed for 1 year from date of receipt.

For more information on our 100% guarantee, please visit [www.novusbio.com/guarantee](http://www.novusbio.com/guarantee)

Earn gift cards/discounts by submitting a review: [www.novusbio.com/reviews/submit/NBP2-43741](http://www.novusbio.com/reviews/submit/NBP2-43741)

Earn gift cards/discounts by submitting a publication using this product:  
[www.novusbio.com/publications](http://www.novusbio.com/publications)

