

Product Datasheet

Pancreatic Polypeptide/PP Antibody (327) - Azide and BSA Free **NBP2-43664**

Unit Size: 0.1 ml

Aliquot and store at -20C or -80C. Avoid freeze-thaw cycles.

www.novusbio.com



technical@novusbio.com

Protocols, Publications, Related Products, Reviews, Research Tools and Images at:
www.novusbio.com/NBP2-43664

Updated 9/9/2025 v.20.1

Earn rewards for product reviews and publications.

Submit a publication at www.novusbio.com/publications

Submit a review at www.novusbio.com/reviews/destination/NBP2-43664



NBP2-43664

Pancreatic Polypeptide/PP Antibody (327) - Azide and BSA Free

Product Information	
Unit Size	0.1 ml
Concentration	Concentrations vary lot to lot. See vial label for concentration. If unlisted please contact technical services.
Storage	Aliquot and store at -20C or -80C. Avoid freeze-thaw cycles.
Clonality	Monoclonal
Clone	327
Preservative	No Preservative
Isotype	IgG2a
Purity	Protein G purified
Buffer	PBS
Target Molecular Weight	10 kDa

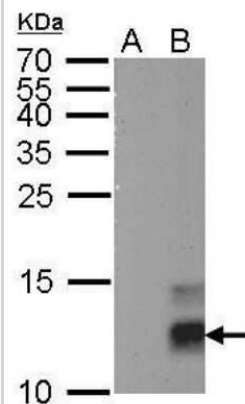
Product Description	
Description	Novus Biologicals Mouse Pancreatic Polypeptide/PP Antibody (327) - Azide and BSA Free (NBP2-43664) is a monoclonal antibody validated for use in WB and ICC/IF. All Novus Biologicals antibodies are covered by our 100% guarantee.
Host	Mouse
Gene ID	5539
Gene Symbol	PPY
Species	Human
Immunogen	Carrier-protein conjugated synthetic peptide encompassing a sequence within the center region of human Pancreatic Polypeptide/PP. The exact sequence is proprietary.

Product Application Details	
Applications	Western Blot, Immunocytochemistry/ Immunofluorescence
Recommended Dilutions	Western Blot 1:5000-1:20000, Immunocytochemistry/ Immunofluorescence 1:100-1:1000

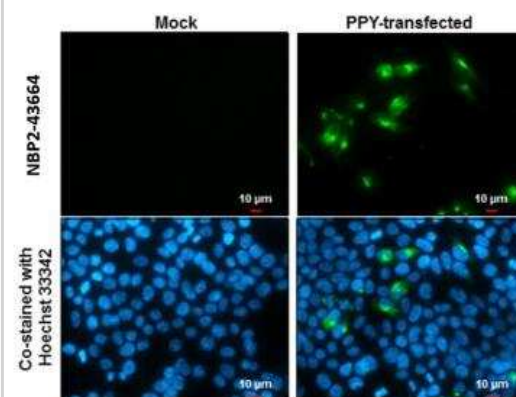


Images

Western Blot: Pancreatic Polypeptide/PP Antibody (327) [NBP2-43664] - Analysis of A. 30 ug 293T whole cell lysate/extract B. 30 ug whole cell lysate/extract of human PPY-transfected 293T cells 15 % SDS-PAGE Pancreatic Polypeptide antibody [327] dilution: 1:10000.



Immunocytochemistry/Immunofluorescence: Pancreatic Polypeptide/PP Antibody (327) [NBP2-43664] - Pancreatic Polypeptide antibody (327) detects Pancreatic Polypeptide protein at cytoplasm by immunofluorescent analysis. Sample: Mock and transfected 293T cells were fixed in 4% paraformaldehyde at RT for 15 min. Green: Pancreatic Polypeptide stained by Pancreatic Polypeptide antibody (327) diluted at 1:2000. Blue: Hoechst 33342 staining. Scale bar= 10um.





Novus Biologicals USA

10730 E. Briarwood Avenue
Centennial, CO 80112
USA
Phone: 303.730.1950
Toll Free: 1.888.506.6887
Fax: 303.730.1966
nb-customerservice@bio-techne.com

Bio-Techne Canada

21 Canmotor Ave
Toronto, ON M8Z 4E6
Canada
Phone: 905.827.6400
Toll Free: 855.668.8722
Fax: 905.827.6402
canada.inquires@bio-techne.com

Bio-Techne Ltd

19 Barton Lane
Abingdon Science Park
Abingdon, OX14 3NB, United Kingdom
Phone: (44) (0) 1235 529449
Free Phone: 0800 37 34 15
Fax: (44) (0) 1235 533420
info.EMEA@bio-techne.com

General Contact Information

www.novusbio.com
Technical Support: nb-technical@bio-techne.com
Orders: nb-customerservice@bio-techne.com
General: novus@novusbio.com

Products Related to NBP2-43664

HAF007	Goat anti-Mouse IgG Secondary Antibody [HRP]
NB720-B	Rabbit anti-Mouse IgG (H+L) Secondary Antibody [Biotin]
NBP1-96778	Mouse IgG2a Isotype Control (M2A)
H00005539-P01-10ug	Recombinant Human Pancreatic Polypeptide/PP GST (N-Term) Protein

Limitations

This product is for research use only and is not approved for use in humans or in clinical diagnosis. Primary Antibodies are guaranteed for 1 year from date of receipt.

For more information on our 100% guarantee, please visit www.novusbio.com/guarantee

Earn gift cards/discounts by submitting a review: www.novusbio.com/reviews/submit/NBP2-43664

Earn gift cards/discounts by submitting a publication using this product:
www.novusbio.com/publications

