

Product Datasheet

CSE1L/CAS/Exportin-2 Antibody (5111) - Azide and BSA Free **NBP2-43609**

Unit Size: 0.1 ml

Aliquot and store at -20C or -80C. Avoid freeze-thaw cycles.

www.novusbio.com



technical@novusbio.com

Protocols, Publications, Related Products, Reviews, Research Tools and Images at:
www.novusbio.com/NBP2-43609

Updated 2/23/2025 v.20.1

Earn rewards for product reviews and publications.

Submit a publication at www.novusbio.com/publications

Submit a review at www.novusbio.com/reviews/destination/NBP2-43609



NBP2-43609

CSE1L/CAS/Exportin-2 Antibody (5111) - Azide and BSA Free

Product Information

Unit Size	0.1 ml
Concentration	Concentrations vary lot to lot. See vial label for concentration. If unlisted please contact technical services.
Storage	Aliquot and store at -20C or -80C. Avoid freeze-thaw cycles.
Clonality	Monoclonal
Clone	5111
Preservative	No Preservative
Isotype	IgG2b
Purity	Protein G purified
Buffer	PBS

Product Description

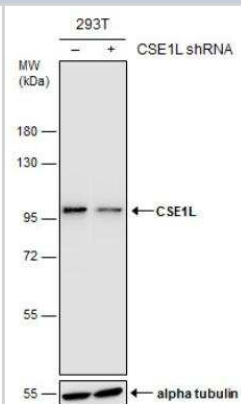
Host	Mouse
Gene ID	1434
Gene Symbol	CSE1L
Species	Human, Mouse, Rat
Reactivity Notes	Xenopus laevis (97%).
Immunogen	Recombinant protein encompassing a sequence within the center region of human CSE1L/CAS/Exportin-2. The exact sequence is proprietary.

Product Application Details

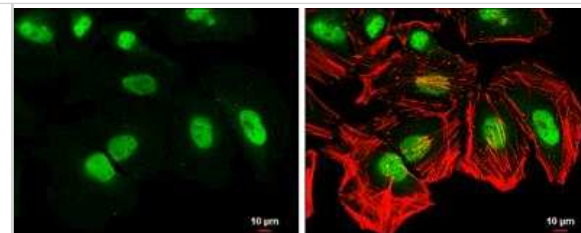
Applications	Western Blot, Immunocytochemistry/ Immunofluorescence
Recommended Dilutions	Western Blot 1:500-1:3000, Immunocytochemistry/ Immunofluorescence 1:100-1:1000

Images

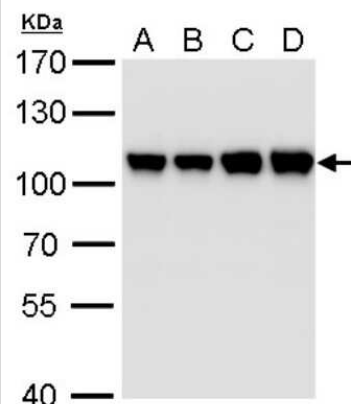
Western Blot: CSE1L/CAS/Exportin-2 Antibody (5111) [NBP2-43609] - Non-transfected (-) and transfected (+) 293T whole cell extracts (15 ug) were separated by 7.5% SDS-PAGE, and the membrane was blotted with CSE1L antibody [5111].



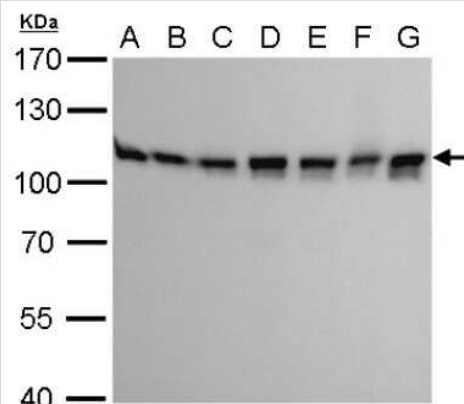
Immunocytochemistry/Immunofluorescence: CSE1L/CAS/Exportin-2 Antibody (5111) [NBP2-43609] - CSE1L Antibody (5111) detects CSE1L protein at nucleus by immunofluorescent analysis. Sample: HeLa cells were fixed in 4% paraformaldehyde at RT for 15 min. Green: CSE1L stained by CSE1L Antibody (5111) diluted at 1:500. Red: phalloidin, a cytoskeleton marker, diluted at 1:100. Scale bar= 10um.



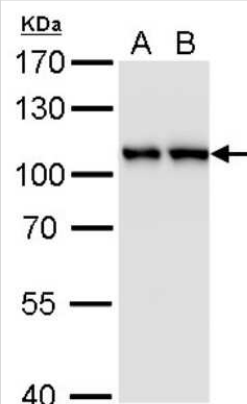
Western Blot: CSE1L/CAS/Exportin-2 Antibody (5111) [NBP2-43609] - Analysis of A. 30 ug 293T whole cell lysate/extract B. 30 ug A431 whole cell lysate/extract C. 30 ug HeLa whole cell lysate/extract D. 30 ug HepG2 whole cell lysate/extract 7.5 % SDS-PAGE CSE1L antibody [5111] dilution: 1:1000



Western Blot: CSE1L/CAS/Exportin-2 Antibody (5111) [NBP2-43609] - Analysis of A. 30 ug Neuro2A whole cell lysate/extract B. 30 ug GL261 whole cell lysate/extract C. 30 ug C8D30 whole cell lysate/extract D. 30 ug NIH-3T3 whole cell lysate/extract E. 30 ug BCL-1 whole cell lysate/extract F. 30 ug Raw 264.7 whole cell lysate/extract G. 30 ug C2C12 whole cell lysate/extract 7.5 % SDS-PAGE CSE1L antibody [5111] dilution: 1:1000



Western Blot: CSE1L/CAS/Exportin-2 Antibody (5111) [NBP2-43609] - Analysis of A. 30 ug PC-12 whole cell lysate/extract B. 30 ug Rat2 whole cell lysate/extract 7.5 % SDS-PAGE CSE1L antibody [5111] dilution: 1:1000.





Novus Biologicals USA

10730 E. Briarwood Avenue
Centennial, CO 80112
USA
Phone: 303.730.1950
Toll Free: 1.888.506.6887
Fax: 303.730.1966
nb-customerservice@bio-techne.com

Bio-Techne Canada

21 Canmotor Ave
Toronto, ON M8Z 4E6
Canada
Phone: 905.827.6400
Toll Free: 855.668.8722
Fax: 905.827.6402
canada.inquires@bio-techne.com

Bio-Techne Ltd

19 Barton Lane
Abingdon Science Park
Abingdon, OX14 3NB, United Kingdom
Phone: (44) (0) 1235 529449
Free Phone: 0800 37 34 15
Fax: (44) (0) 1235 533420
info.EMEA@bio-techne.com

General Contact Information

www.novusbio.com
Technical Support: nb-technical@bio-techne.com
Orders: nb-customerservice@bio-techne.com
General: novus@novusbio.com

Products Related to NBP2-43609

HAF007	Goat anti-Mouse IgG Secondary Antibody [HRP]
NB720-B	Rabbit anti-Mouse IgG (H+L) Secondary Antibody [Biotin]
NBP2-27231	Mouse IgG2b Isotype Control (MPC-11)
H00001434-P01-10ug	Recombinant Human CSE1L/CAS/Exportin-2 GST (N-Term) Protein

Limitations

This product is for research use only and is not approved for use in humans or in clinical diagnosis. Primary Antibodies are guaranteed for 1 year from date of receipt.

For more information on our 100% guarantee, please visit www.novusbio.com/guarantee

Earn gift cards/discounts by submitting a review: www.novusbio.com/reviews/submit/NBP2-43609

Earn gift cards/discounts by submitting a publication using this product:
www.novusbio.com/publications

