

Product Datasheet

gamma Tubulin Antibody (4511) - Azide and BSA Free NBP2-43585

Unit Size: 0.1 ml

Aliquot and store at -20C or -80C. Avoid freeze-thaw cycles.

www.novusbio.com



technical@novusbio.com

Publications: 1

Protocols, Publications, Related Products, Reviews, Research Tools and Images at:
www.novusbio.com/NBP2-43585

Updated 2/23/2025 v.20.1

Earn rewards for product
reviews and publications.

Submit a publication at www.novusbio.com/publications

Submit a review at www.novusbio.com/reviews/destination/NBP2-43585



NBP2-43585

gamma Tubulin Antibody (4511) - Azide and BSA Free

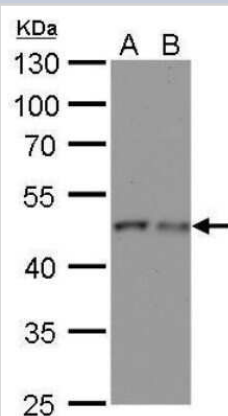
Product Information	
Unit Size	0.1 ml
Concentration	Concentrations vary lot to lot. See vial label for concentration. If unlisted please contact technical services.
Storage	Aliquot and store at -20C or -80C. Avoid freeze-thaw cycles.
Clonality	Monoclonal
Clone	4511
Preservative	No Preservative
Isotype	IgG2b
Purity	Protein G purified
Buffer	PBS
Target Molecular Weight	51 kDa

Product Description	
Host	Mouse
Gene ID	7283
Gene Symbol	TUBG1
Species	Human, Mouse, Rat, Drosophila
Reactivity Notes	Xenopus laevis (99%).
Immunogen	Recombinant protein encompassing a sequence within the center region of human gamma Tubulin. The exact sequence is proprietary.

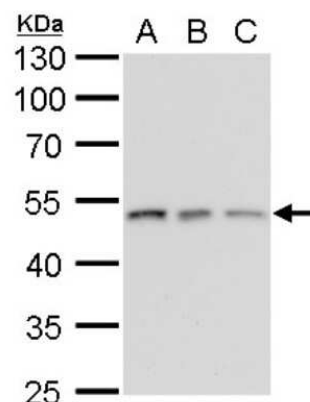
Product Application Details	
Applications	Western Blot, Immunocytochemistry/ Immunofluorescence, Immunohistochemistry
Recommended Dilutions	Western Blot 1:500-1:3000, Immunohistochemistry Assay dependent, Immunocytochemistry/ Immunofluorescence 1:100-1:1000
Application Notes	IHC Assay dependent

Images

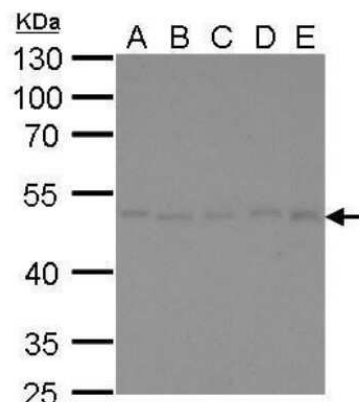
Western Blot: gamma Tubulin Antibody (4511) [NBP2-43585] - Analysis of A. 30 ug PC-12 whole cell lysate/extract B. 30 ug Rat-2 whole cell lysate/extract 10 % SDS-PAGE gamma Tubulin antibody dilution: 1:500.



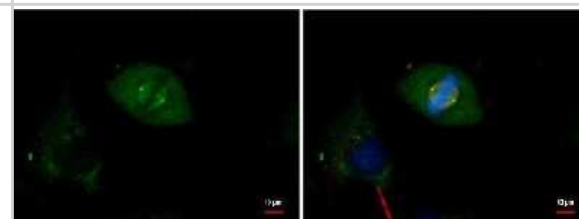
Western Blot: gamma Tubulin Antibody (4511) [NBP2-43585] - Analysis of A. 30 ug Jurkat whole cell lysate/extract B. 30 ug Raji whole cell lysate/extract C. 30 ug NCI-H929 whole cell lysate/extract 10 % SDS-PAGE gamma Tubulin antibody [4511] dilution: 1:1000



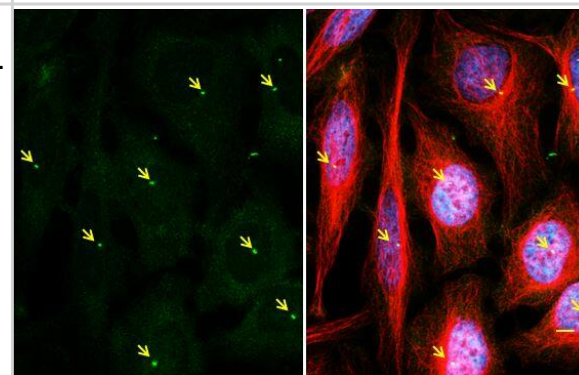
Western Blot: gamma Tubulin Antibody (4511) [NBP2-43585] - Analysis of A. 30 ug Neuro2A whole cell lysate/extract B. 30 ug C8D30 whole cell lysate/extract C. 30 ug NIH-3T3 whole cell lysate/extract D. 30 ug BCL-1 whole cell lysate/extract E. 30 ug C2C12 whole cell lysate/extract 10 % SDS-PAGE gamma Tubulin antibody dilution: 1:500



Immunocytochemistry/Immunofluorescence: gamma Tubulin Antibody (4511) [NBP2-43585] - Analysis of HeLa cells were fixed in -20? 100% methanol for 5 min. Green: TUBG1 protein stained by TUBA1B antibody diluted at 1:500. Blue: Hoechst 33342 staining.



Immunocytochemistry/Immunofluorescence: gamma Tubulin Antibody (4511) [NBP2-43585] - HeLa cells were fixed in ice-cold MeOH for 5 min. Green: gamma Tubulin stained by gamma Tubulin antibody [4511] diluted at 1:500. Red: alpha Tubulin, stained by alpha Tubulin antibody diluted at 1:500. Blue: Fluoroshield with DAPI.



Publications

Zhang C, Huang C, Xia H et al. Autophagic sequestration of SQSTM1 disrupts the aggresome formation of ubiquitinated proteins during proteasome inhibition Cell death & disease 2022-07-15 [PMID: 35840557] (ICC/IF, Human)



Novus Biologicals USA

10730 E. Briarwood Avenue
Centennial, CO 80112
USA
Phone: 303.730.1950
Toll Free: 1.888.506.6887
Fax: 303.730.1966
nb-customerservice@bio-techne.com

Bio-Techne Canada

21 Canmotor Ave
Toronto, ON M8Z 4E6
Canada
Phone: 905.827.6400
Toll Free: 855.668.8722
Fax: 905.827.6402
canada.inquires@bio-techne.com

Bio-Techne Ltd

19 Barton Lane
Abingdon Science Park
Abingdon, OX14 3NB, United Kingdom
Phone: (44) (0) 1235 529449
Free Phone: 0800 37 34 15
Fax: (44) (0) 1235 533420
info.EMEA@bio-techne.com

General Contact Information

www.novusbio.com
Technical Support: nb-technical@bio-
techne.com
Orders: nb-customerservice@bio-techne.com
General: novus@novusbio.com

Products Related to NBP2-43585

HAF007	Goat anti-Mouse IgG Secondary Antibody [HRP]
NB720-B	Rabbit anti-Mouse IgG (H+L) Secondary Antibody [Biotin]
NBP2-27231	Mouse IgG2b Isotype Control (MPC-11)
NBP1-72534-100ug	Recombinant Human gamma Tubulin His Protein

Limitations

This product is for research use only and is not approved for use in humans or in clinical diagnosis. Primary Antibodies are guaranteed for 1 year from date of receipt.

For more information on our 100% guarantee, please visit www.novusbio.com/guarantee

Earn gift cards/discounts by submitting a review: www.novusbio.com/reviews/submit/NBP2-43585

Earn gift cards/discounts by submitting a publication using this product:
www.novusbio.com/publications

