

Product Datasheet

SUV3L1 Antibody (244) - Azide and BSA Free NBP2-43565

Unit Size: 0.1 ml

Aliquot and store at -20C or -80C. Avoid freeze-thaw cycles.

www.novusbio.com



technical@novusbio.com

Protocols, Publications, Related Products, Reviews, Research Tools and Images at:
www.novusbio.com/NBP2-43565

Updated 9/9/2025 v.20.1

Earn rewards for product
reviews and publications.

Submit a publication at www.novusbio.com/publications

Submit a review at www.novusbio.com/reviews/destination/NBP2-43565



NBP2-43565

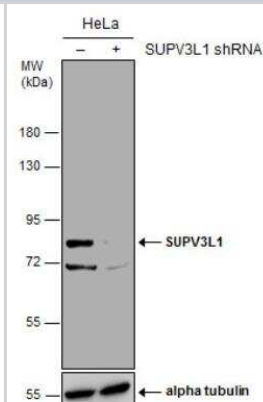
SUV3L1 Antibody (244) - Azide and BSA Free

Product Information	
Unit Size	0.1 ml
Concentration	Concentrations vary lot to lot. See vial label for concentration. If unlisted please contact technical services.
Storage	Aliquot and store at -20C or -80C. Avoid freeze-thaw cycles.
Clonality	Monoclonal
Clone	244
Preservative	No Preservative
Isotype	IgG1
Purity	Protein G purified
Buffer	PBS
Product Description	
Description	Novus Biologicals Mouse SUV3L1 Antibody (244) - Azide and BSA Free (NBP2-43565) is a monoclonal antibody validated for use in IHC and WB. All Novus Biologicals antibodies are covered by our 100% guarantee.
Host	Mouse
Gene ID	6832
Gene Symbol	SUPV3L1
Species	Human
Immunogen	The immunogen used to generate this antibody corresponds to human SUV3L1
Product Application Details	
Applications	Western Blot, Immunohistochemistry-Paraffin, Immunohistochemistry
Recommended Dilutions	Western Blot 1:500-1:10000, Immunohistochemistry 10 - 1:500, Immunohistochemistry-Paraffin 1:100-1:1000

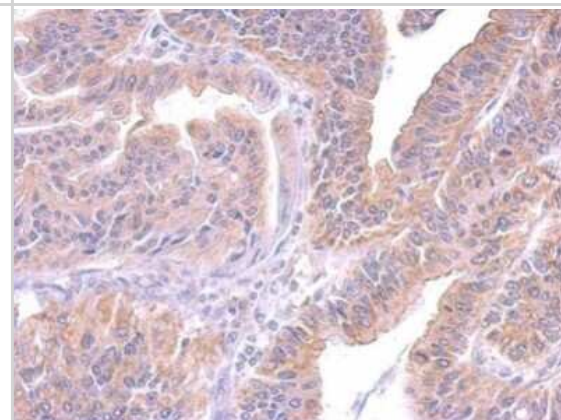


Images

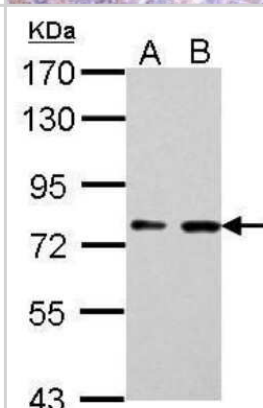
Western Blot: SUV3L1 Antibody (244) [NBP2-43565] - Non-transfected (-) and transfected (+) HeLa whole cell extracts (30 ug) were separated by 7.5% SDS-PAGE, and the membrane was blotted with SUPV3L1 antibody [GT244].



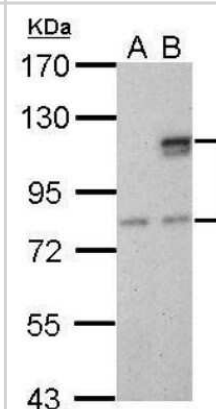
Immunohistochemistry-Paraffin: SUV3L1 Antibody (244) [NBP2-43565] - Analysis of gastric carcinoma. SUPV3L1 antibody [244] dilution: 1:200.



Western Blot: SUV3L1 Antibody (244) [NBP2-43565] - Analysis of A. 30 ug H1299 whole cell lysate/extract B. 30 ug HCT116 whole cell lysate/extract 7.5 % SDS-PAGE SUPV3L1 antibody [0003] dilution: 1:1000



Western Blot: SUV3L1 Antibody (244) [NBP2-43565] - Analysis of A. 30 ug HeLa whole cell lysate/extract B. 30 ug whole cell lysate/extract of GFP-human SUV3-transfected HeLa cells 7.5 % SDS-PAGE SUPV3L1 antibody [0003] dilution: 1:5000.





Novus Biologicals USA

10730 E. Briarwood Avenue
Centennial, CO 80112
USA
Phone: 303.730.1950
Toll Free: 1.888.506.6887
Fax: 303.730.1966
nb-customerservice@bio-techne.com

Bio-Techne Canada

21 Canmotor Ave
Toronto, ON M8Z 4E6
Canada
Phone: 905.827.6400
Toll Free: 855.668.8722
Fax: 905.827.6402
canada.inquires@bio-techne.com

Bio-Techne Ltd

19 Barton Lane
Abingdon Science Park
Abingdon, OX14 3NB, United Kingdom
Phone: (44) (0) 1235 529449
Free Phone: 0800 37 34 15
Fax: (44) (0) 1235 533420
info.EMEA@bio-techne.com

General Contact Information

www.novusbio.com
Technical Support: nb-technical@bio-techne.com
Orders: nb-customerservice@bio-techne.com
General: novus@novusbio.com

Products Related to NBP2-43565

HAF007	Goat anti-Mouse IgG Secondary Antibody [HRP]
NB720-B	Rabbit anti-Mouse IgG (H+L) Secondary Antibody [Biotin]
NBP1-97005-0.5mg	Mouse IgG1 Isotype Control (MG1)
NBP1-80711PEP	SUV3L1 Recombinant Protein Antigen

Limitations

This product is for research use only and is not approved for use in humans or in clinical diagnosis. Primary Antibodies are guaranteed for 1 year from date of receipt.

For more information on our 100% guarantee, please visit www.novusbio.com/guarantee

Earn gift cards/discounts by submitting a review: www.novusbio.com/reviews/submit/NBP2-43565

Earn gift cards/discounts by submitting a publication using this product:
www.novusbio.com/publications

