

Product Datasheet

Atpalpha Antibody - BSA Free NBP2-42817

Unit Size: 0.1 ml

Aliquot and store at -20C or -80C. Avoid freeze-thaw cycles.

www.novusbio.com



technical@novusbio.com

Protocols, Publications, Related Products, Reviews, Research Tools and Images at:
www.novusbio.com/NBP2-42817

Updated 9/9/2025 v.20.1

Earn rewards for product
reviews and publications.

Submit a publication at www.novusbio.com/publications

Submit a review at www.novusbio.com/reviews/destination/NBP2-42817



NBP2-42817

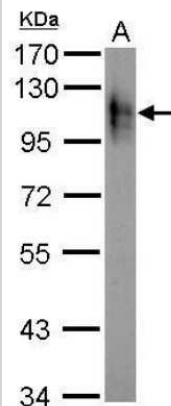
Atpalpha Antibody - BSA Free

Product Information	
Unit Size	0.1 ml
Concentration	Concentrations vary lot to lot. See vial label for concentration. If unlisted please contact technical services.
Storage	Aliquot and store at -20C or -80C. Avoid freeze-thaw cycles.
Clonality	Polyclonal
Preservative	0.01% Thimerosal
Isotype	IgG
Purity	Antigen Affinity-purified
Buffer	PBS, 20% Glycerol (pH7)
Product Description	
Description	Novus Biologicals Rabbit Atpalpha Antibody - BSA Free (NBP2-42817) is a polyclonal antibody validated for use in IHC and WB. All Novus Biologicals antibodies are covered by our 100% guarantee.
Host	Rabbit
Gene ID	48971
Species	Human, Drosophila
Immunogen	Recombinant protein encompassing a sequence within the C-terminus region of Drosophila Atpalpha. The exact sequence is proprietary.
Product Application Details	
Applications	Western Blot, Immunohistochemistry-Paraffin, Immunohistochemistry
Recommended Dilutions	Western Blot 1:5000-1:20000, Immunohistochemistry 10 - 1:500, Immunohistochemistry-Paraffin 1:100-1:1000

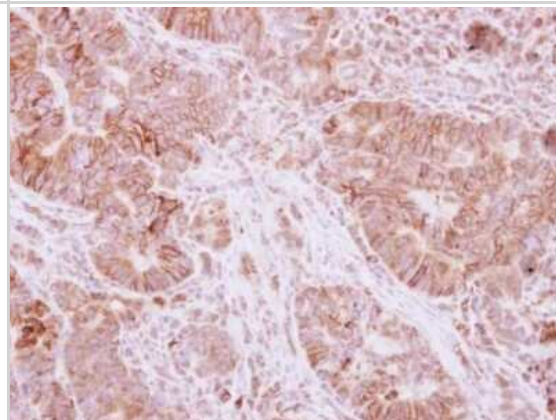


Images

Western Blot: Atpalpha Antibody [NBP2-42817] - Analysis of whole cell lysate. A: Drosophila lysate(1ug) 7.5% SDS PAGE diluted at 1:10000.

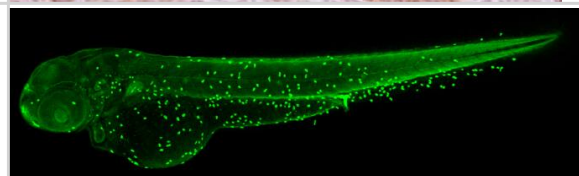


Immunohistochemistry-Paraffin: Atpalpha Antibody [NBP2-42817] - Analysis of colon ca, using Atpalpha antibody at 1:250 dilution.



Immunohistochemistry: Atpalpha Antibody [NBP2-42817] - Atpalpha antibody detects Atpalpha protein on zebrafish by whole mount immunohistochemical analysis.

Sample: 3 days-post-fertilization zebrafish embryo.
Atpalpha antibody (NBP2-42817) dilution: 1:100.

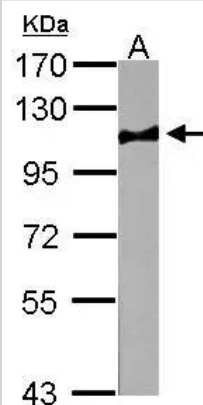


Western Blot: Atpalpha Antibody [NBP2-42817] - Sample (10 ug of whole cell lysate)

A: zebrafish brain

7.5% SDS PAGE

NBP2-42817 diluted at 1:20000





Novus Biologicals USA

10730 E. Briarwood Avenue
Centennial, CO 80112
USA
Phone: 303.730.1950
Toll Free: 1.888.506.6887
Fax: 303.730.1966
nb-customerservice@bio-techne.com

Bio-Techne Canada

21 Canmotor Ave
Toronto, ON M8Z 4E6
Canada
Phone: 905.827.6400
Toll Free: 855.668.8722
Fax: 905.827.6402
canada.inquires@bio-techne.com

Bio-Techne Ltd

19 Barton Lane
Abingdon Science Park
Abingdon, OX14 3NB, United Kingdom
Phone: (44) (0) 1235 529449
Free Phone: 0800 37 34 15
Fax: (44) (0) 1235 533420
info.EMEA@bio-techne.com

General Contact Information

www.novusbio.com
Technical Support: nb-technical@bio-
techne.com
Orders: nb-customerservice@bio-techne.com
General: novus@novusbio.com

Products Related to NBP2-42817

HAF008	Goat anti-Rabbit IgG Secondary Antibody [HRP]
NB7160	Goat anti-Rabbit IgG (H+L) Secondary Antibody [HRP]
NBP2-24891	Rabbit IgG Isotype Control

Limitations

This product is for research use only and is not approved for use in humans or in clinical diagnosis. Primary Antibodies are guaranteed for 1 year from date of receipt.

For more information on our 100% guarantee, please visit www.novusbio.com/guarantee

Earn gift cards/discounts by submitting a review: www.novusbio.com/reviews/submit/NBP2-42817

Earn gift cards/discounts by submitting a publication using this product:
www.novusbio.com/publications

