

Product Datasheet

cleavage stimulation factor Antibody (10E11) - BSA Free NBP2-42659

Unit Size: 100 ul

Store at 4C short term. Aliquot and store at -20C long term. Avoid freeze-thaw cycles.

www.novusbio.com



technical@novusbio.com

Protocols, Publications, Related Products, Reviews, Research Tools and Images at:
www.novusbio.com/NBP2-42659

Updated 3/18/2024 v.20.1

Earn rewards for product
reviews and publications.

Submit a publication at www.novusbio.com/publications

Submit a review at www.novusbio.com/reviews/destination/NBP2-42659



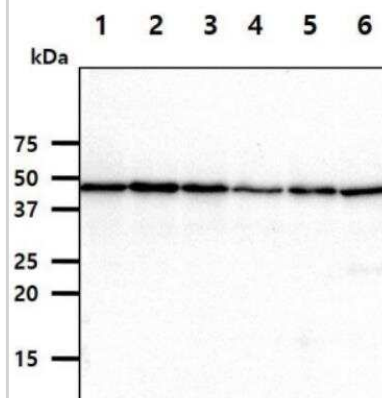
NBP2-42659

cleavage stimulation factor Antibody (10E11) - BSA Free

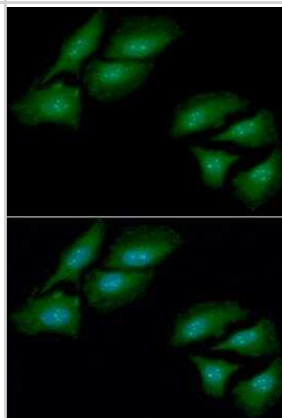
Product Information	
Unit Size	100 ul
Concentration	1 mg/ml
Storage	Store at 4C short term. Aliquot and store at -20C long term. Avoid freeze-thaw cycles.
Clonality	Monoclonal
Clone	10E11
Preservative	0.02% Sodium Azide
Isotype	IgG2b Kappa
Purity	Protein A purified
Buffer	PBS (pH 7.4), 10% Glycerol
Product Description	
Host	Mouse
Gene ID	1477
Gene Symbol	CSTF1
Species	Human
Immunogen	Recombinant human cleavage stimulation factor (1-431aa) purified from E. coli
Product Application Details	
Applications	Western Blot, ELISA, Immunocytochemistry/ Immunofluorescence
Recommended Dilutions	Western Blot 1:1000, ELISA, Immunocytochemistry/ Immunofluorescence 1:100

Images

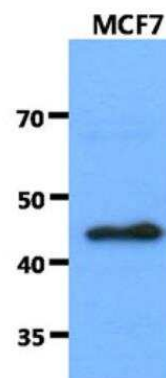
Western Blot: cleavage stimulation factor Antibody (10E11) [NBP2-42659] - The cell lysates (40ug) were resolved by SDS-PAGE, transferred to PVDF membrane and probed with anti-human CSTF1 antibody (1:1000). Proteins were visualized using a goat anti-mouse secondary antibody conjugated to HRP and an ECL detection system. Lane 1.: MCF7 cell lysate Lane 2.: 293T cell lysate Lane 3.: HeLa cell lysate Lane 4.: A549 cell lysate Lane 5.: K562 cell lysate Lane 6.: Jurkat cell lysate



Immunocytochemistry/Immunofluorescence: cleavage stimulation factor Antibody (10E11) [NBP2-42659] - Analysis of CSTF1 in HeLa cells line, stained with DAPI (Blue) for nucleus staining and monoclonal anti-human CSTF1 antibody (1:100) with goat anti-mouse IgG-Alexa fluor 488 conjugate (Green).



Western Blot: cleavage stimulation factor Antibody (10E11) [NBP2-42659] - The cell lysates of MCF7 (40ug) were resolved by SDS-PAGE, transferred to PVDF membrane and probed with anti-human antibody (1:1000). Proteins were visualized using a goat anti-mouse secondary antibody conjugated to HRP and an ECL detection system.





Novus Biologicals USA

10730 E. Briarwood Avenue
Centennial, CO 80112
USA
Phone: 303.730.1950
Toll Free: 1.888.506.6887
Fax: 303.730.1966
nb-customerservice@bio-techne.com

Bio-Techne Canada

21 Canmotor Ave
Toronto, ON M8Z 4E6
Canada
Phone: 905.827.6400
Toll Free: 855.668.8722
Fax: 905.827.6402
canada.inquires@bio-techne.com

Bio-Techne Ltd

19 Barton Lane
Abingdon Science Park
Abingdon, OX14 3NB, United Kingdom
Phone: (44) (0) 1235 529449
Free Phone: 0800 37 34 15
Fax: (44) (0) 1235 533420
info.EMEA@bio-techne.com

General Contact Information

www.novusbio.com
Technical Support: nb-technical@bio-
techne.com
Orders: nb-customerservice@bio-techne.com
General: novus@novusbio.com

Limitations

This product is for research use only and is not approved for use in humans or in clinical diagnosis. Primary Antibodies are guaranteed for 1 year from date of receipt.

For more information on our 100% guarantee, please visit www.novusbio.com/guarantee

Earn gift cards/discounts by submitting a review: www.novusbio.com/reviews/submit/NBP2-42659

Earn gift cards/discounts by submitting a publication using this product:
www.novusbio.com/publications

