

Product Datasheet

Laminin alpha 4 Antibody (CL3185) - BSA Free NBP2-42393

Unit Size: 0.1 ml

Store at 4C short term. Aliquot and store at -20C long term. Avoid freeze-thaw cycles.

www.novusbio.com



technical@novusbio.com

Publications: 1

Protocols, Publications, Related Products, Reviews, Research Tools and Images at:
www.novusbio.com/NBP2-42393

Updated 2/27/2025 v.20.1

Earn rewards for product
reviews and publications.

Submit a publication at www.novusbio.com/publications

Submit a review at www.novusbio.com/reviews/destination/NBP2-42393



NBP2-42393

Laminin alpha 4 Antibody (CL3185) - BSA Free

Product Information

Unit Size	0.1 ml
Concentration	Concentrations vary lot to lot. See vial label for concentration. If unlisted please contact technical services.
Storage	Store at 4C short term. Aliquot and store at -20C long term. Avoid freeze-thaw cycles.
Clonality	Monoclonal
Clone	CL3185
Preservative	0.02% Sodium Azide
Isotype	IgG1
Purity	Protein A purified
Buffer	PBS (pH 7.2) and 40% Glycerol

Product Description

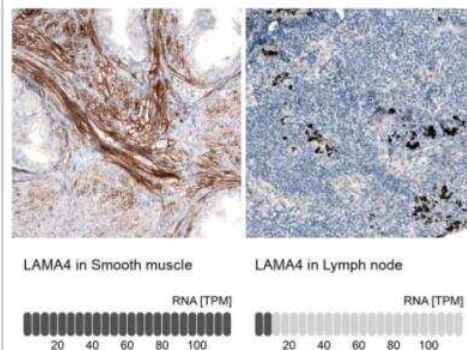
Host	Mouse
Gene ID	3910
Gene Symbol	LAMA4
Species	Human, Mouse
Reactivity Notes	Expected to cross react based on sequence identity: Rat (85%). Please note that this antibody is reactive to Mouse and derived from the same host, Mouse. Mouse-On-Mouse blocking reagent may be needed for IHC and ICC experiments to reduce high background signal. You can find these reagents under catalog numbers PK-2200-NB and MP-2400-NB. Please contact Technical Support if you have any questions
Immunogen	This antibody was developed using a recombinant protein derived from Q16363, with the exact immunogen sequence remaining proprietary.

Product Application Details

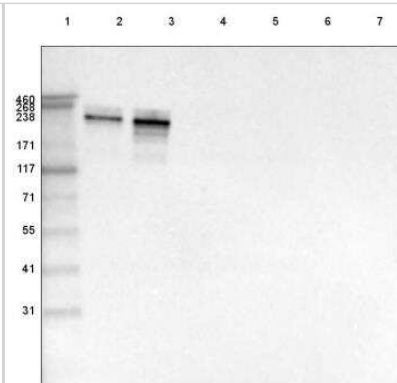
Applications	Western Blot, Immunohistochemistry, Immunohistochemistry-Paraffin
Recommended Dilutions	Western Blot 1 ug/ml, Immunohistochemistry 1:500 - 1:1000, Immunohistochemistry-Paraffin 1:500-1:1000
Application Notes	For IHC-Paraffin, HIER pH 6 retrieval is recommended.

Images

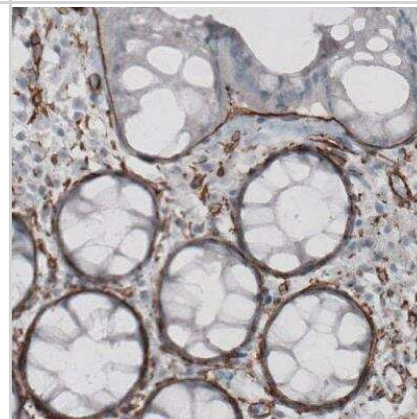
Immunohistochemistry-Paraffin: Laminin alpha 4 Antibody (CL3185) [NBP2-42393] - Analysis in human smooth muscle and lymph node tissues using NBP2-42393 antibody. Corresponding LAMA4 RNA-seq data are presented for the same tissues.



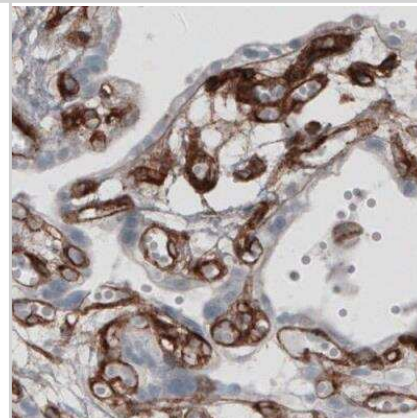
Western Blot: Laminin alpha 4 Antibody (CL3185) [NBP2-42393] - Lane 1: Marker [kDa] 460, 268, 238, 171, 117, 71, 55, 41, 31 Lane 2: Purified human recombinant protein Laminin-411 Lane 3: Purified human recombinant protein Laminin-421 Lane 4: Purified human recombinant protein Laminin-511 Lane 5: Purified human recombinant protein Laminin-121 Lane 6: Purified human recombinant protein Laminin-221 Lane 7: Purified human recombinant protein Laminin-332



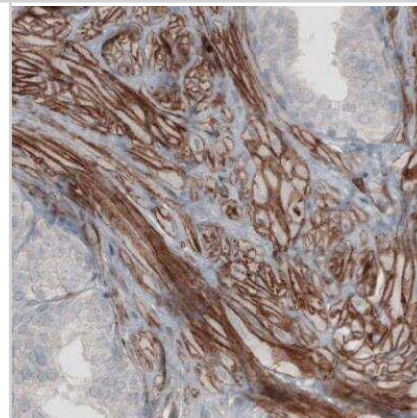
Immunohistochemistry-Paraffin: Laminin alpha 4 Antibody (CL3185) [NBP2-42393] - Staining of human rectum shows strong immunoreactivity in basement membrane of glandular epithelium.



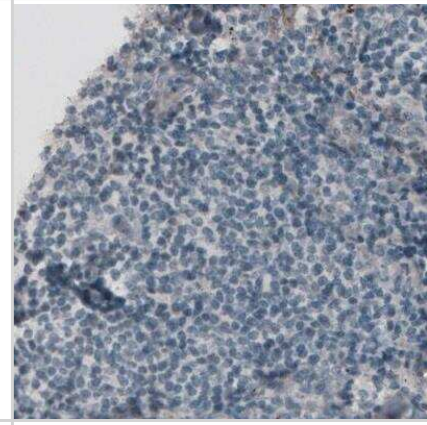
Immunohistochemistry-Paraffin: Laminin alpha 4 Antibody (CL3185) [NBP2-42393] - Staining of human placenta shows strong positivity in basement membrane of trophoblast and in endothelium.



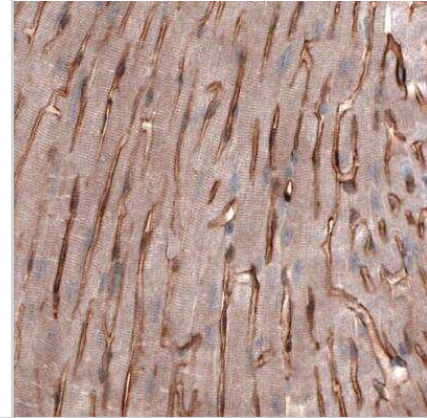
Immunohistochemistry-Paraffin: Laminin alpha 4 Antibody (CL3185) [NBP2-42393] - Staining of human prostate shows moderate membranous positivity in smooth muscle cells.



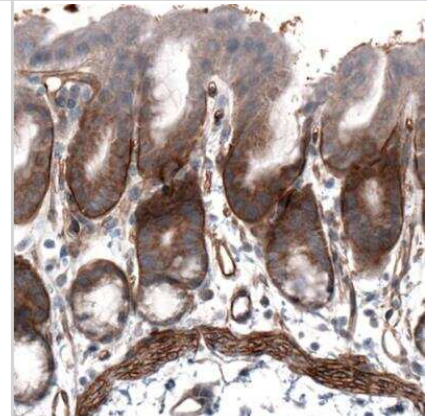
Immunohistochemistry-Paraffin: Laminin alpha 4 Antibody (CL3185) [NBP2-42393] - Staining of human lymph node shows absence of immunoreactivity in lymphoid tissue (negative control).



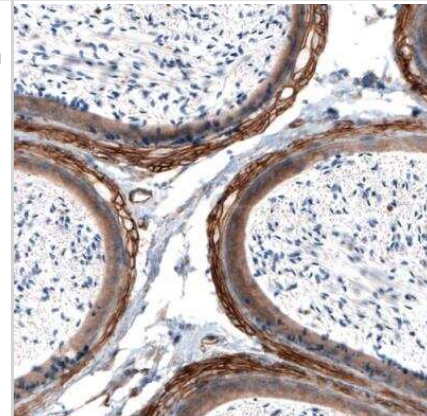
Immunohistochemistry-Paraffin: Laminin alpha 4 Antibody (CL3185) [NBP2-42393] - Staining of mouse heart muscle shows membranous positivity in cardiomyocytes.



Immunohistochemistry-Paraffin: Laminin alpha 4 Antibody (CL3185) [NBP2-42393] - Staining of mouse stomach shows strong positivity in basement membrane of glandular epithelium and in smooth muscle layer.



Immunohistochemistry-Paraffin: Laminin alpha 4 Antibody (CL3185) [NBP2-42393] - Staining of mouse epididymis shows immunoreactivity in smooth muscle in the lamina propria.



Publications

Mariangela Mastrapasqua, Roberta Rossi, Lucrezia De Cosmo, Annalisa Resta, Mariella Errede, Antonella Bizzoca, Stefania Zampatti, Nicoletta Resta, Emiliano Giardina, Maddalena Ruggieri, Daniela Virgintino, Tiziana Annese, Nicola Laforgia, Francesco Girolamo Autophagy increase in Merosin-Deficient Congenital Muscular Dystrophy type 1A European Journal of Translational Myology 2023-07-28 [PMID: 37522802]



Novus Biologicals USA

10730 E. Briarwood Avenue
Centennial, CO 80112
USA
Phone: 303.730.1950
Toll Free: 1.888.506.6887
Fax: 303.730.1966
nb-customerservice@bio-techne.com

Bio-Techne Canada

21 Canmotor Ave
Toronto, ON M8Z 4E6
Canada
Phone: 905.827.6400
Toll Free: 855.668.8722
Fax: 905.827.6402
canada.inquires@bio-techne.com

Bio-Techne Ltd

19 Barton Lane
Abingdon Science Park
Abingdon, OX14 3NB, United Kingdom
Phone: (44) (0) 1235 529449
Free Phone: 0800 37 34 15
Fax: (44) (0) 1235 533420
info.EMEA@bio-techne.com

General Contact Information

www.novusbio.com
Technical Support: nb-technical@bio-techne.com
Orders: nb-customerservice@bio-techne.com
General: novus@novusbio.com

Products Related to NBP2-42393

HAF007	Goat anti-Mouse IgG Secondary Antibody [HRP]
NB720-B	Rabbit anti-Mouse IgG (H+L) Secondary Antibody [Biotin]
NBP1-97005-0.5mg	Mouse IgG1 Isotype Control (MG1)
NBP2-42392PEP	Laminin alpha 4 Recombinant Protein Antigen

Limitations

This product is for research use only and is not approved for use in humans or in clinical diagnosis. Primary Antibodies are guaranteed for 1 year from date of receipt.

For more information on our 100% guarantee, please visit www.novusbio.com/guarantee

Earn gift cards/discounts by submitting a review: www.novusbio.com/reviews/submit/NBP2-42393

Earn gift cards/discounts by submitting a publication using this product:
www.novusbio.com/publications

