

# Product Datasheet

## epithelial Sodium Channel gamma Antibody (11-35-1) - BSA Free NBP2-41374

Unit Size: 0.1 mg

Store at 4C in the dark.

[www.novusbio.com](http://www.novusbio.com)



[technical@novusbio.com](mailto:technical@novusbio.com)

Protocols, Publications, Related Products, Reviews, Research Tools and Images at:  
[www.novusbio.com/NBP2-41374](http://www.novusbio.com/NBP2-41374)

Updated 9/9/2025 v.20.1

Earn rewards for product  
reviews and publications.

Submit a publication at [www.novusbio.com/publications](http://www.novusbio.com/publications)

Submit a review at [www.novusbio.com/reviews/destination/NBP2-41374](http://www.novusbio.com/reviews/destination/NBP2-41374)



**NBP2-41374**

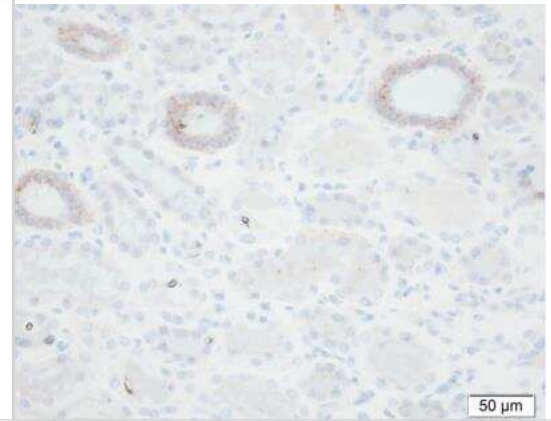
epithelial Sodium Channel gamma Antibody (11-35-1) - BSA Free

Product Information	
Unit Size	0.1 mg
Concentration	1 mg/ml
Storage	Store at 4C in the dark.
Clonality	Monoclonal
Clone	11-35-1
Preservative	0.09% Sodium Azide
Isotype	IgG1 Kappa
Purity	Protein A or G purified
Buffer	10mM Phosphate (pH 7.4) and 0.5M NaCl
Product Description	
Description	Novus Biologicals Mouse epithelial Sodium Channel gamma Antibody (11-35-1) - BSA Free (NBP2-41374) is a monoclonal antibody validated for use in IHC, WB, ELISA and ICC/IF. All Novus Biologicals antibodies are covered by our 100% guarantee.
Host	Mouse
Gene ID	6340
Gene Symbol	SCNN1G
Species	Human
Specificity/Sensitivity	Antibody is specific for the neopeptide generated after proteolytic cleavage of human gENaC and recognizes the C-terminal fragment starting from amino acid residue 182.
Immunogen	Synthetic peptide sequence: VGGSIIHKAC
Product Application Details	
Applications	Western Blot, Immunohistochemistry-Paraffin, ELISA, Immunocytochemistry/Immunofluorescence, Immunohistochemistry, Immunohistochemistry-Frozen
Recommended Dilutions	Western Blot 1:100-1:2000, ELISA 1:100-1:2000, Immunohistochemistry 1:10-1:500, Immunocytochemistry/Immunofluorescence 1:10-1:500, Immunohistochemistry-Paraffin 1:10-1:500, Immunohistochemistry-Frozen 1:10-1:500
Application Notes	ELISA: NBP2-41374 can be used in ELISA. WB: NBP2-41374 can be used in Western blot. IHC: NBP2-41374 can be used in IHC. IF: NBP2-41374 can be used in immunofluorescence.



## Images

Immunohistochemistry-Paraffin: epithelial Sodium Channel gamma  
Antibody (5c2) [NBP2-41374] - Staining of Human kidney tissue.  
Courtesy of Per Svenningsen, PhD.





### **Novus Biologicals USA**

10730 E. Briarwood Avenue  
Centennial, CO 80112  
USA  
Phone: 303.730.1950  
Toll Free: 1.888.506.6887  
Fax: 303.730.1966  
nb-customerservice@bio-techne.com

### **Bio-Techne Canada**

21 Canmotor Ave  
Toronto, ON M8Z 4E6  
Canada  
Phone: 905.827.6400  
Toll Free: 855.668.8722  
Fax: 905.827.6402  
canada.inquires@bio-techne.com

### **Bio-Techne Ltd**

19 Barton Lane  
Abingdon Science Park  
Abingdon, OX14 3NB, United Kingdom  
Phone: (44) (0) 1235 529449  
Free Phone: 0800 37 34 15  
Fax: (44) (0) 1235 533420  
info.EMEA@bio-techne.com

### **General Contact Information**

www.novusbio.com  
Technical Support: nb-technical@bio-techne.com  
Orders: nb-customerservice@bio-techne.com  
General: novus@novusbio.com

### **Products Related to NBP2-41374**

HAF007	Goat anti-Mouse IgG Secondary Antibody [HRP]
NB720-B	Rabbit anti-Mouse IgG (H+L) Secondary Antibody [Biotin]
NBP1-43319-0.5mg	Mouse IgG1 Kappa Isotype Control (P3.6.2.8.1)
NBP2-56532PEP	epithelial Sodium Channel gamma Recombinant Protein Antigen

### **Limitations**

This product is for research use only and is not approved for use in humans or in clinical diagnosis. Primary Antibodies are guaranteed for 1 year from date of receipt.

For more information on our 100% guarantee, please visit [www.novusbio.com/guarantee](http://www.novusbio.com/guarantee)

Earn gift cards/discounts by submitting a review: [www.novusbio.com/reviews/submit/NBP2-41374](http://www.novusbio.com/reviews/submit/NBP2-41374)

Earn gift cards/discounts by submitting a publication using this product:  
[www.novusbio.com/publications](http://www.novusbio.com/publications)

