

Product Datasheet

NSRP1 Antibody - BSA Free

NBP2-41139

Unit Size: 0.1 mg

Store at 4C short term. Aliquot and store at -20C long term. Avoid freeze-thaw cycles.

www.novusbio.com



technical@novusbio.com

Protocols, Publications, Related Products, Reviews, Research Tools and Images at:
www.novusbio.com/NBP2-41139

Updated 10/23/2024 v.20.1

Earn rewards for product
reviews and publications.

Submit a publication at www.novusbio.com/publications

Submit a review at www.novusbio.com/reviews/destination/NBP2-41139



NBP2-41139

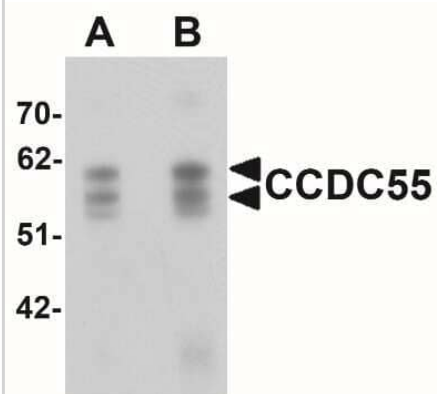
NSRP1 Antibody - BSA Free

| Product Information | |
|-----------------------------|---|
| Unit Size | 0.1 mg |
| Concentration | 1 mg/ml |
| Storage | Store at 4C short term. Aliquot and store at -20C long term. Avoid freeze-thaw cycles. |
| Clonality | Polyclonal |
| Preservative | 0.02% Sodium Azide |
| Isotype | IgY |
| Purity | Peptide affinity purified |
| Buffer | PBS |
| Product Description | |
| Host | Chicken |
| Gene ID | 84081 |
| Gene Symbol | NSRP1 |
| Species | Human, Mouse, Rat |
| Reactivity Notes | Immunogen displays the following percentage of sequence identity for non-tested species: Bovine (88%) |
| Specificity/Sensitivity | At least three isoforms are known to exist; this antibody will detect all three. |
| Immunogen | Antibody was raised against a 16 amino acid synthetic peptide near the carboxy terminus of human CCDC55. The immunogen is located within amino acids 430 - 480 of CCDC55. Amino Acid Sequence: VQSSERNQDRKESSPN |
| Notes | Chicken products cannot be exported to Canada. |
| Product Application Details | |
| Applications | Western Blot, ELISA, Immunocytochemistry/ Immunofluorescence |
| Recommended Dilutions | Western Blot 0.5-1 ug/ml, ELISA, Immunocytochemistry/ Immunofluorescence 20 ug/ml |

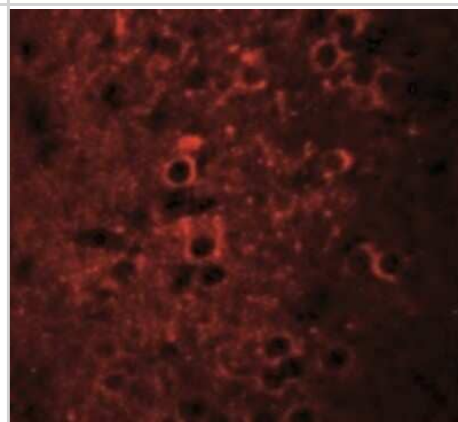


Images

Western Blot: NSRP1 Antibody [NBP2-41139] - Western blot analysis of CCDC55 in human brain tissue lysate with CCDC55 antibody at (A) 0.5 and (B) 1 ug/mL



Immunocytochemistry/Immunofluorescence: NSRP1 Antibody [NBP2-41139] - Immunofluorescence of CCDC55 in mouse brain cells with CCDC55 antibody at 20 ug/mL.





Novus Biologicals USA

10730 E. Briarwood Avenue
Centennial, CO 80112
USA
Phone: 303.730.1950
Toll Free: 1.888.506.6887
Fax: 303.730.1966
nb-customerservice@bio-techne.com

Bio-Techne Canada

21 Canmotor Ave
Toronto, ON M8Z 4E6
Canada
Phone: 905.827.6400
Toll Free: 855.668.8722
Fax: 905.827.6402
canada.inquires@bio-techne.com

Bio-Techne Ltd

19 Barton Lane
Abingdon Science Park
Abingdon, OX14 3NB, United Kingdom
Phone: (44) (0) 1235 529449
Free Phone: 0800 37 34 15
Fax: (44) (0) 1235 533420
info.EMEA@bio-techne.com

General Contact Information

www.novusbio.com
Technical Support: nb-technical@bio-techne.com
Orders: nb-customerservice@bio-techne.com
General: novus@novusbio.com

Products Related to NBP2-41139

| | |
|---------------|--|
| BAF010 | Goat anti-Chicken IgY Secondary Antibody [Biotin] |
| NB7276 | Goat anti-Chicken IgM Heavy Chain Secondary Antibody |
| NBP1-90548PEP | NSRP1 Recombinant Protein Antigen |
| NBP2-06077 | NSRP1 Overexpression Lysate |

Limitations

This product is for research use only and is not approved for use in humans or in clinical diagnosis. Primary Antibodies are guaranteed for 1 year from date of receipt.

For more information on our 100% guarantee, please visit www.novusbio.com/guarantee

Earn gift cards/discounts by submitting a review: www.novusbio.com/reviews/submit/NBP2-41139

Earn gift cards/discounts by submitting a publication using this product:
www.novusbio.com/publications

