

# Product Datasheet

## Pyruvate Dehydrogenase E1 beta subunit Antibody - BSA Free NBP2-38327

Unit Size: 0.1 ml

Store at 4C short term. Aliquot and store at -20C long term. Avoid freeze-thaw cycles.

[www.novusbio.com](http://www.novusbio.com)



[technical@novusbio.com](mailto:technical@novusbio.com)

Protocols, Publications, Related Products, Reviews, Research Tools and Images at:  
[www.novusbio.com/NBP2-38327](http://www.novusbio.com/NBP2-38327)

Updated 2/23/2025 v.20.1

Earn rewards for product  
reviews and publications.

Submit a publication at [www.novusbio.com/publications](http://www.novusbio.com/publications)

Submit a review at [www.novusbio.com/reviews/destination/NBP2-38327](http://www.novusbio.com/reviews/destination/NBP2-38327)



**NBP2-38327**

Pyruvate Dehydrogenase E1 beta subunit Antibody - BSA Free

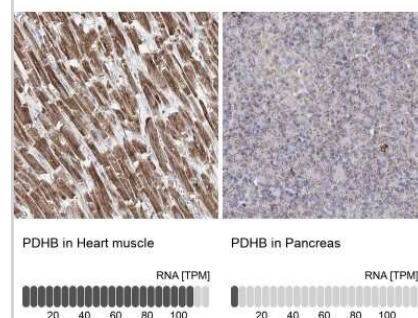
Product Information	
Unit Size	0.1 ml
Concentration	Concentrations vary lot to lot. See vial label for concentration. If unlisted please contact technical services.
Storage	Store at 4C short term. Aliquot and store at -20C long term. Avoid freeze-thaw cycles.
Clonality	Polyclonal
Preservative	0.02% Sodium Azide
Isotype	IgG
Purity	Immunogen affinity purified
Buffer	PBS (pH 7.2) and 40% Glycerol

Product Description	
Host	Rabbit
Gene ID	5162
Gene Symbol	PDHB
Species	Human
Immunogen	This antibody was developed against a recombinant protein corresponding to amino acids: LIKSAIRDNNPVVVLENELMYGVPFEFPPEAQSKDFLIPIGKAKIERQGGTHITVVS HSRPVGHCCLEAAAVLSKEGVE

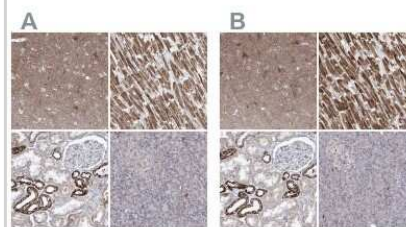
Product Application Details	
Applications	Western Blot, Simple Western, Immunocytochemistry/ Immunofluorescence, Immunohistochemistry, Immunohistochemistry-Paraffin
Recommended Dilutions	Western Blot 0.04-0.4 ug/ml, Simple Western, Immunohistochemistry 1:500 - 1:1000, Immunocytochemistry/ Immunofluorescence 0.25-2 ug/ml, Immunohistochemistry-Paraffin 1:500 - 1:1000
Application Notes	For IHC-Paraffin, HIER pH 6 retrieval is recommended. ICC/IF, Fixation Permeabilization: Use PFA/Triton X-100. See <a href="#">Simple Western Antibody Database</a> for Simple Western validation: Separated by size; matrix was 12-230 kDa; detected by Chemiluminescence.

**Images**

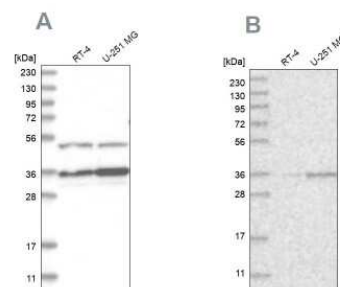
Immunohistochemistry-Paraffin: Pyruvate Dehydrogenase E1 beta subunit Antibody [NBP2-38327] - Analysis in human heart muscle and pancreas tissues. Corresponding Pyruvate Dehydrogenase E1 beta subunit RNA-seq data are presented for the same tissues.



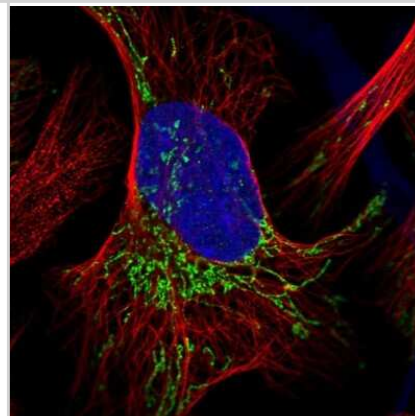
**Immunohistochemistry-Paraffin: Pyruvate Dehydrogenase E1 beta subunit Antibody [NBP2-38327]** - Staining of human cerebral cortex, heart muscle, kidney and pancreas using Anti-Pyruvate Dehydrogenase E1 beta subunit antibody NBP2-38327 (A) shows similar protein distribution across tissues to independent antibody NBP1-87421 (B).



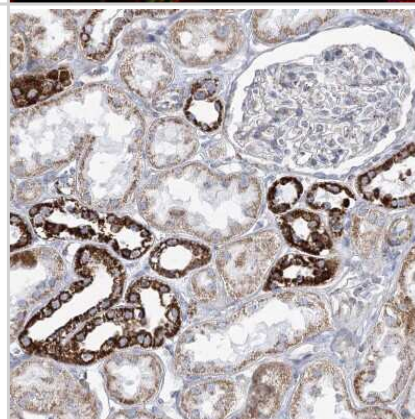
**Western Blot: Pyruvate Dehydrogenase E1 beta subunit Antibody [NBP2-38327]** - Analysis using Anti-PDHB antibody NBP2-38327 (A) shows similar pattern to independent antibody NBP1-87421 (B).



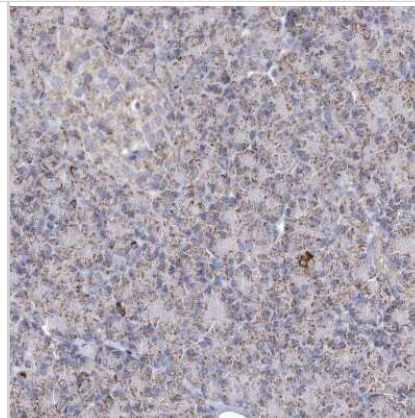
**Immunocytochemistry/Immunofluorescence: Pyruvate Dehydrogenase E1 beta subunit Antibody [NBP2-38327]** - Immunofluorescent staining of human cell line U-2 OS shows localization to mitochondria.



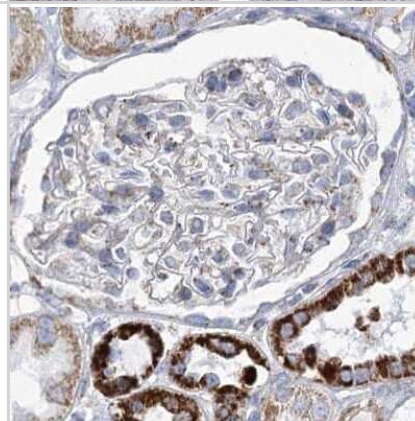
**Immunohistochemistry-Paraffin: Pyruvate Dehydrogenase E1 beta subunit Antibody [NBP2-38327]** - Staining of human kidney shows strong granular cytoplasmic positivity in cells in distal tubules.



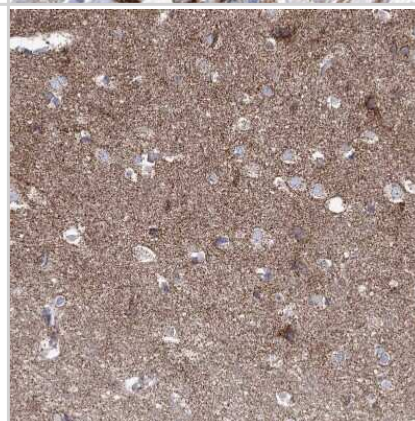
Immunohistochemistry-Paraffin: Pyruvate Dehydrogenase E1 beta subunit Antibody [NBP2-38327] - Staining of human pancreas shows low expression as expected.



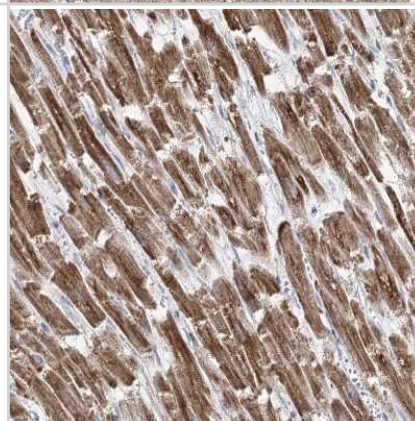
Immunohistochemistry-Paraffin: Pyruvate Dehydrogenase E1 beta subunit Antibody [NBP2-38327] - Staining of human kidney.



Immunohistochemistry-Paraffin: Pyruvate Dehydrogenase E1 beta subunit Antibody [NBP2-38327] - Staining of human cerebral cortex shows moderate positivity in neuropil.



Immunohistochemistry-Paraffin: Pyruvate Dehydrogenase E1 beta subunit Antibody [NBP2-38327] - Staining of human heart muscle shows strong cytoplasmic positivity in cardiomyocytes.







### **Novus Biologicals USA**

10730 E. Briarwood Avenue  
Centennial, CO 80112  
USA  
Phone: 303.730.1950  
Toll Free: 1.888.506.6887  
Fax: 303.730.1966  
nb-customerservice@bio-techne.com

### **Bio-Techne Canada**

21 Canmotor Ave  
Toronto, ON M8Z 4E6  
Canada  
Phone: 905.827.6400  
Toll Free: 855.668.8722  
Fax: 905.827.6402  
canada.inquires@bio-techne.com

### **Bio-Techne Ltd**

19 Barton Lane  
Abingdon Science Park  
Abingdon, OX14 3NB, United Kingdom  
Phone: (44) (0) 1235 529449  
Free Phone: 0800 37 34 15  
Fax: (44) (0) 1235 533420  
info.EMEA@bio-techne.com

### **General Contact Information**

[www.novusbio.com](http://www.novusbio.com)  
Technical Support: nb-technical@bio-techne.com  
Orders: nb-customerservice@bio-techne.com  
General: novus@novusbio.com

### **Products Related to NBP2-38327**

---

NBP2-38327PEP	Pyruvate Dehydrogenase E1 beta subunit Recombinant Protein Antigen
HAF008	Goat anti-Rabbit IgG Secondary Antibody [HRP]
NB7160	Goat anti-Rabbit IgG (H+L) Secondary Antibody [HRP]
NBP2-24891	Rabbit IgG Isotype Control

---

### **Limitations**

This product is for research use only and is not approved for use in humans or in clinical diagnosis. Primary Antibodies are guaranteed for 1 year from date of receipt.

For more information on our 100% guarantee, please visit [www.novusbio.com/guarantee](http://www.novusbio.com/guarantee)

Earn gift cards/discounts by submitting a review: [www.novusbio.com/reviews/submit/NBP2-38327](http://www.novusbio.com/reviews/submit/NBP2-38327)

Earn gift cards/discounts by submitting a publication using this product:  
[www.novusbio.com/publications](http://www.novusbio.com/publications)

