

# Product Datasheet

## Enah/Vasp-like Antibody NBP2-38132

Unit Size: 0.1 ml

Store at 4C short term. Aliquot and store at -20C long term. Avoid freeze-thaw cycles.

[www.novusbio.com](http://www.novusbio.com)



[technical@novusbio.com](mailto:technical@novusbio.com)

Protocols, Publications, Related Products, Reviews, Research Tools and Images at:  
[www.novusbio.com/NBP2-38132](http://www.novusbio.com/NBP2-38132)

Updated 9/4/2023 v.20.1

Earn rewards for product  
reviews and publications.

Submit a publication at [www.novusbio.com/publications](http://www.novusbio.com/publications)

Submit a review at [www.novusbio.com/reviews/destination/NBP2-38132](http://www.novusbio.com/reviews/destination/NBP2-38132)



**NBP2-38132**

Enah/Vasp-like Antibody

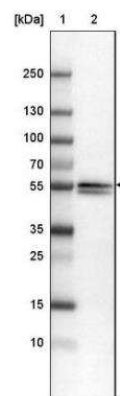
Product Information	
Unit Size	0.1 ml
Concentration	Concentrations vary lot to lot. See vial label for concentration. If unlisted please contact technical services.
Storage	Store at 4C short term. Aliquot and store at -20C long term. Avoid freeze-thaw cycles.
Clonality	Polyclonal
Preservative	0.02% Sodium Azide
Isotype	IgG
Purity	Immunogen affinity purified
Buffer	PBS (pH 7.2) and 40% Glycerol

Product Description	
Host	Rabbit
Gene ID	51466
Gene Symbol	EVL
Species	Human
Immunogen	This antibody was developed against a recombinant protein corresponding to amino acids: SNSVEKPVSSILSRMKPAGSVNDMALDAFDLDRMKQEILEEVVRELHKVKEEII DAIRQELSGI

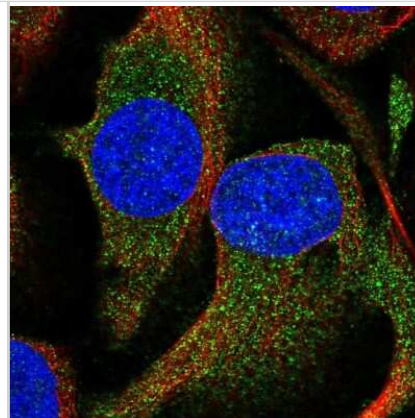
Product Application Details	
Applications	Western Blot, Simple Western, Immunocytochemistry/Immunofluorescence, Immunohistochemistry, Immunohistochemistry-Paraffin
Recommended Dilutions	Western Blot 0.04-0.4 ug/ml, Simple Western 1:25, Immunohistochemistry 1:1000 - 1:2500, Immunocytochemistry/Immunofluorescence 0.25-2 ug/ml, Immunohistochemistry-Paraffin 1:1000 - 1:2500
Application Notes	For IHC-Paraffin, HIER pH 6 retrieval is recommended. ICC/IF Fixation Permeabilization: Use PFA/Triton X-100.

**Images**

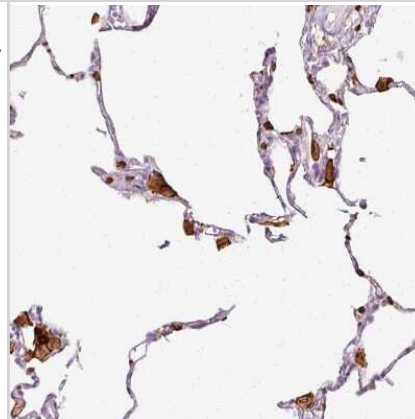
Western Blot: Enah/Vasp-like Antibody [NBP2-38132] - Lane 1: Marker [kDa] 250, 130, 100, 70, 55, 35, 25, 15, 10 Lane 2: Human cell line MOLT-4



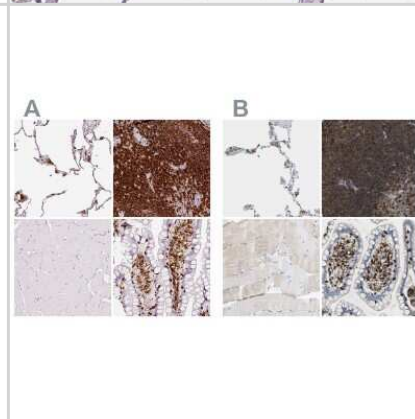
Immunocytochemistry/Immunofluorescence: Enah/Vasp-like Antibody [NBP2-38132] - Staining of human cell line U-2 OS shows localization to cytosol. Antibody staining is shown in green.



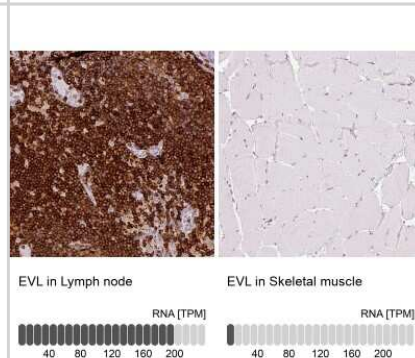
Immunohistochemistry-Paraffin: Enah/Vasp-like Antibody [NBP2-38132] - Staining of human lung shows moderate to strong cytoplasmic positivity in macrophages.



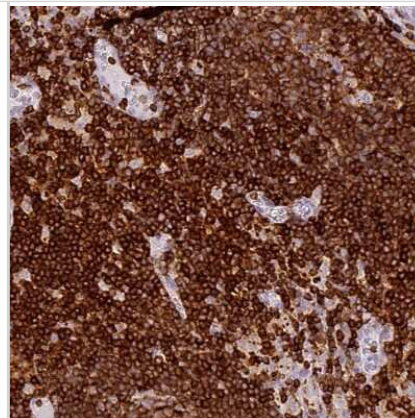
Immunohistochemistry-Paraffin: Enah/Vasp-like Antibody [NBP2-38132] - Staining of human lung, lymph node, skeletal muscle and small intestine using Anti-EVL antibody NBP2-38132 (A) shows similar protein distribution across tissues to independent antibody NBP1-80831 (B).



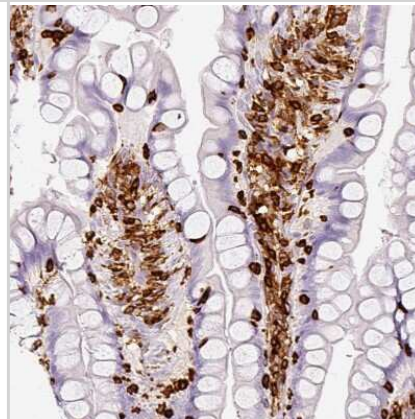
Immunohistochemistry-Paraffin: Enah/Vasp-like Antibody [NBP2-38132] - Analysis in human lymph node and skeletal muscle tissues. Corresponding EVL RNA-seq data are presented for the same tissues.



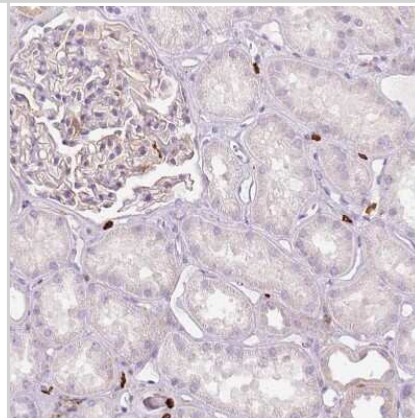
Immunohistochemistry-Paraffin: Enah/Vasp-like Antibody [NBP2-38132]  
- Staining of human lymph node shows moderate to strong cytoplasmic positivity in non-germinal center cells.



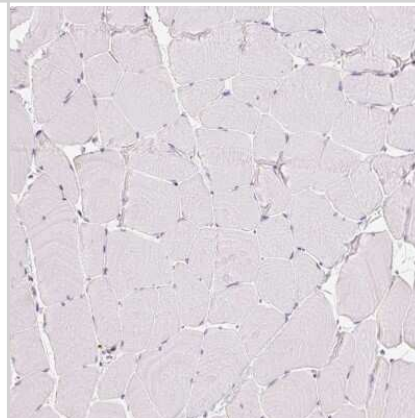
Immunohistochemistry-Paraffin: Enah/Vasp-like Antibody [NBP2-38132]  
- Staining of human small intestine shows moderate to strong cytoplasmic positivity in lymphoid cells.



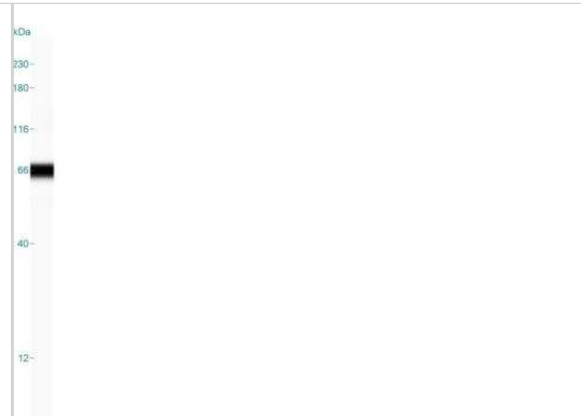
Immunohistochemistry-Paraffin: Enah/Vasp-like Antibody [NBP2-38132]  
- Staining of human kidney shows no positivity in cells in tubules as expected.



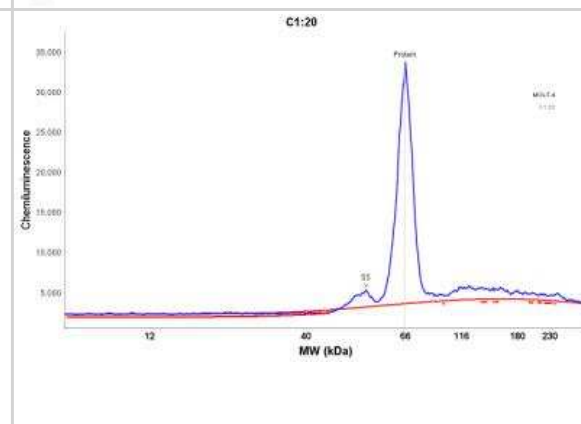
Immunohistochemistry-Paraffin: Enah/Vasp-like Antibody [NBP2-38132]  
- Staining of human skeletal muscle shows no positivity in myocytes as expected.



Simple Western: Enah/Vasp-like Antibody [NBP2-38132] - Simple Western lane view shows a specific band for Enah/Vasp-like in 0.2 mg/ml of MOLT-4 lysate(s). This experiment was performed under reducing conditions using the 12-230 kDa separation system.



Simple Western: Enah/Vasp-like Antibody [NBP2-38132] - Electropherogram image of the corresponding Simple Western lane view. Enah/Vasp-like antibody was used at 1:25 dilution on MOLT-4 lysate(s) respectively.





### **Novus Biologicals USA**

10730 E. Briarwood Avenue  
Centennial, CO 80112  
USA

Phone: 303.730.1950  
Toll Free: 1.888.506.6887  
Fax: 303.730.1966  
novus@novusbio.com

### **Bio-Techne Canada**

21 Canmotor Ave  
Toronto, ON M8Z 4E6  
Canada

Phone: 905.827.6400  
Toll Free: 855.668.8722  
Fax: 905.827.6402  
canada.inquires@bio-techne.com

### **Bio-Techne Ltd**

19 Barton Lane  
Abingdon Science Park  
Abingdon, OX14 3NB, United Kingdom

Phone: (44) (0) 1235 529449  
Free Phone: 0800 37 34 15  
Fax: (44) (0) 1235 533420  
info.EMEA@bio-techne.com

### **General Contact Information**

www.novusbio.com  
Technical Support: technical@novusbio.com  
Orders: orders@novusbio.com  
General: novus@novusbio.com

### **Limitations**

This product is for research use only and is not approved for use in humans or in clinical diagnosis. Primary Antibodies are guaranteed for 1 year from date of receipt.

For more information on our 100% guarantee, please visit [www.novusbio.com/guarantee](http://www.novusbio.com/guarantee)

Earn gift cards/discounts by submitting a review: [www.novusbio.com/reviews/submit/NBP2-38132](http://www.novusbio.com/reviews/submit/NBP2-38132)

Earn gift cards/discounts by submitting a publication using this product:  
[www.novusbio.com/publications](http://www.novusbio.com/publications)

