

Product Datasheet

S-Peptide Epitope Tag Antibody (6.2) NBP2-37832

Unit Size: 100ug

Store at -20C. Avoid freeze-thaw cycles.

www.novusbio.com



technical@novusbio.com

Protocols, Publications, Related Products, Reviews, Research Tools and Images at:
www.novusbio.com/NBP2-37832

Updated 9/9/2025 v.20.1

Earn rewards for product
reviews and publications.

Submit a publication at www.novusbio.com/publications

Submit a review at www.novusbio.com/reviews/destination/NBP2-37832

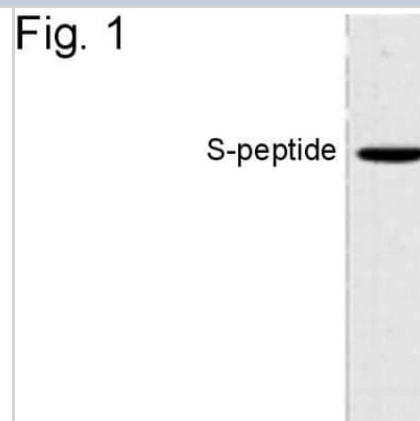


NBP2-37832**S-Peptide Epitope Tag Antibody (6.2)**

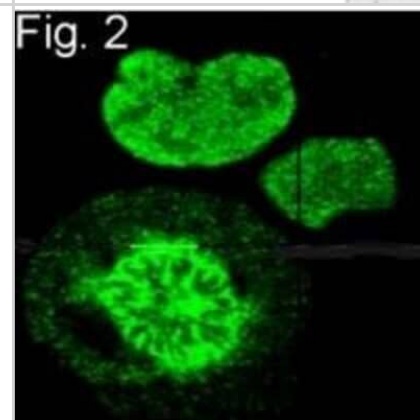
Product Information	
Unit Size	100ug
Concentration	1 mg/ml
Storage	Store at -20C. Avoid freeze-thaw cycles.
Clonality	Monoclonal
Clone	6.2
Preservative	0.05% Sodium Azide
Isotype	IgG2b
Purity	Protein G purified
Buffer	PBS with 1 mg/ml BSA
Product Description	
Description	Novus Biologicals Mouse S-Peptide Epitope Tag Antibody (6.2) (NBP2-37832) is a monoclonal antibody validated for use in IHC, WB and ICC/IF. All Novus Biologicals antibodies are covered by our 100% guarantee.
Host	Mouse
Species	Epitope Tag
Specificity/Sensitivity	This antibody detects the S-peptide in human samples. has been successfully used in Western blot, immunohistochemistry and immunofluorescence procedures. By Western blot this antibody detects the S-peptide in K562 cells. In immunohistochemistry, and immunofluorescence procedures recognizes the S-peptide in transfected K562 cells. The immunogen corresponds to the S-peptide conjugated through a C-terminal cysteine to keyhole limpet hemocyanin.
Immunogen	Synthetic Peptide: K(1) E T A A A K F E R Q H M D S(15) C
Product Application Details	
Applications	Western Blot, Immunocytochemistry/ Immunofluorescence, Immunohistochemistry
Recommended Dilutions	Western Blot 1 ug/ml, Immunohistochemistry 10 ug/ml, Immunocytochemistry/ Immunofluorescence 10 ug/ml

Images

Western Blot: S-Peptide Epitope Tag Antibody (6.2) [NBP2-37832] - Analysis of S-peptide epitope tag.



Immunocytochemistry/Immunofluorescence: S-Peptide Epitope Tag Antibody (6.2) [NBP2-37832] - Analysis of S-peptide tagged topoisomerase I in the nuclei of transfected K562 cells.





Novus Biologicals USA

10730 E. Briarwood Avenue
Centennial, CO 80112
USA
Phone: 303.730.1950
Toll Free: 1.888.506.6887
Fax: 303.730.1966
nb-customerservice@bio-techne.com

Bio-Techne Canada

21 Canmotor Ave
Toronto, ON M8Z 4E6
Canada
Phone: 905.827.6400
Toll Free: 855.668.8722
Fax: 905.827.6402
canada.inquires@bio-techne.com

Bio-Techne Ltd

19 Barton Lane
Abingdon Science Park
Abingdon, OX14 3NB, United Kingdom
Phone: (44) (0) 1235 529449
Free Phone: 0800 37 34 15
Fax: (44) (0) 1235 533420
info.EMEA@bio-techne.com

General Contact Information

www.novusbio.com
Technical Support: nb-technical@bio-techne.com
Orders: nb-customerservice@bio-techne.com
General: novus@novusbio.com

Products Related to NBP2-37832

NBP2-33376H	Blue Marker Antibody (6F4-F6) [HRP]
HAF007	Goat anti-Mouse IgG Secondary Antibody [HRP]
NB7539	Goat anti-Mouse IgG (H+L) Secondary Antibody [HRP]
NBP2-27231	Mouse IgG2b Isotype Control (MPC-11)

Limitations

This product is for research use only and is not approved for use in humans or in clinical diagnosis. Primary Antibodies are guaranteed for 1 year from date of receipt.

For more information on our 100% guarantee, please visit www.novusbio.com/guarantee

Earn gift cards/discounts by submitting a review: www.novusbio.com/reviews/submit/NBP2-37832

Earn gift cards/discounts by submitting a publication using this product:
www.novusbio.com/publications

