

Product Datasheet

TORC3/CRTC3 Antibody (5G9)

NBP2-37635

Unit Size: 0.1 ml

Store at 4C short term. Aliquot and store at -20C long term. Avoid freeze-thaw cycles.

www.novusbio.com



technical@novusbio.com

Protocols, Publications, Related Products, Reviews, Research Tools and Images at:
www.novusbio.com/NBP2-37635

Updated 5/13/2021 v.20.1

Earn rewards for product
reviews and publications.

Submit a publication at www.novusbio.com/publications

Submit a review at www.novusbio.com/reviews/destination/NBP2-37635



NBP2-37635**TORC3/CRTC3 Antibody (5G9)**

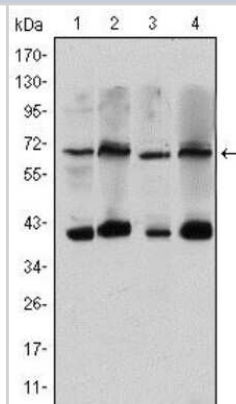
Product Information	
Unit Size	0.1 ml
Concentration	This product is unpurified. The exact concentration of antibody is not quantifiable.
Storage	Store at 4C short term. Aliquot and store at -20C long term. Avoid freeze-thaw cycles.
Clonality	Monoclonal
Clone	5G9
Preservative	0.03% Sodium Azide
Isotype	IgG1
Purity	Unpurified
Buffer	Ascites
Target Molecular Weight	68 kDa

Product Description	
Host	Mouse
Gene ID	64784
Gene Symbol	CRTC3
Species	Human, Primate
Immunogen	Purified recombinant fragment of human CRTC3 expressed in E. Coli.

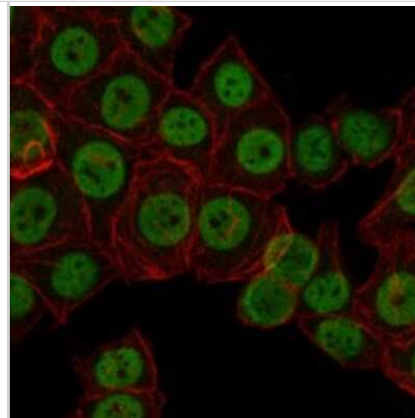
Product Application Details	
Applications	Western Blot, ELISA, Immunocytochemistry/Immunofluorescence, Immunohistochemistry, Immunohistochemistry-Paraffin
Recommended Dilutions	Western Blot 1:500 - 1:2000, ELISA 1:10000, Immunohistochemistry 1:200 - 1:1000, Immunocytochemistry/Immunofluorescence 1:200 - 1:1000, Immunohistochemistry-Paraffin 1:200 - 1:1000

Images

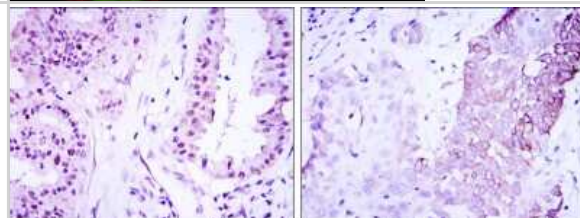
Western Blot: TORC3/CRTC3 Antibody (5G9) [NBP2-37635] - Western blot analysis using CRTC3 mouse mAb against Hela (1), Jurkat (2), Cos7 (3) and MCF-7 (4) cell lysate.



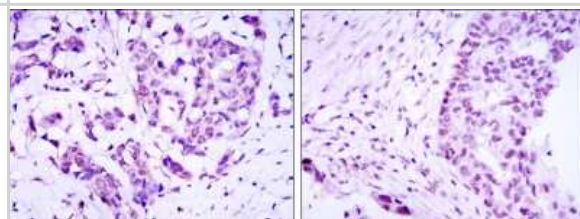
Immunocytochemistry/Immunofluorescence: TORC3/CRTC3 Antibody (5G9) [NBP2-37635] - Immunofluorescence analysis of NTERA-2 cells using CRTC3 mouse mAb (green). Red: Actin filaments have been labeled with Alexa Fluor-555 phalloidin.



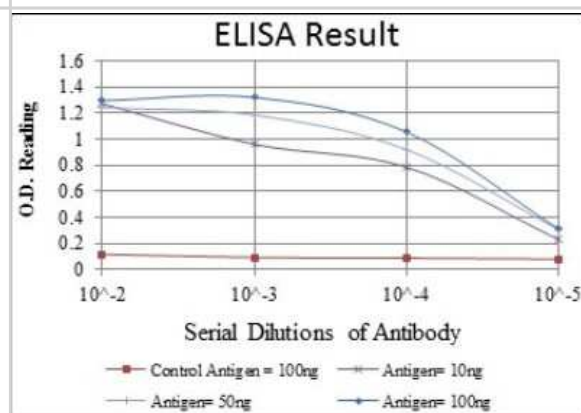
Immunohistochemistry: TORC3/CRTC3 Antibody (5G9) [NBP2-37635] - Immunohistochemical analysis of paraffin-embedded lung cancer (left) and esophagus cancer (right) using CRTC3 mouse mAb with DAB staining.



Immunohistochemistry: TORC3/CRTC3 Antibody (5G9) [NBP2-37635] - Immunohistochemical analysis of paraffin-embedded breast cancer (left) and ovarian cancer (right) using CRTC3 mouse mAb with DAB staining.



ELISA: TORC3/CRTC3 Antibody (5G9) [NBP2-37635] - Red: Control Antigen (100ng); Purple: Antigen (10ng); Green: Antigen (50ng); Blue: Antigen (100ng);





Novus Biologicals USA

10730 E. Briarwood Avenue
Centennial, CO 80112
USA

Phone: 303.730.1950
Toll Free: 1.888.506.6887
Fax: 303.730.1966
novus@novusbio.com

Bio-Techne Canada

21 Canmotor Ave
Toronto, ON M8Z 4E6
Canada

Phone: 905.827.6400
Toll Free: 855.668.8722
Fax: 905.827.6402
canada.inquires@bio-techne.com

Bio-Techne Ltd

19 Barton Lane
Abingdon Science Park
Abingdon, OX14 3NB, United Kingdom
Phone: (44) (0) 1235 529449
Free Phone: 0800 37 34 15
Fax: (44) (0) 1235 533420
info.EMEA@bio-techne.com

General Contact Information

www.novusbio.com
Technical Support: technical@novusbio.com
Orders: orders@novusbio.com
General: novus@novusbio.com

Limitations

This product is for research use only and is not approved for use in humans or in clinical diagnosis. Primary Antibodies are guaranteed for 1 year from date of receipt.

For more information on our 100% guarantee, please visit www.novusbio.com/guarantee

Earn gift cards/discounts by submitting a review: www.novusbio.com/reviews/submit/NBP2-37635

Earn gift cards/discounts by submitting a publication using this product:
www.novusbio.com/publications

