

# Product Datasheet

## eEF-2 Antibody (5B6) NBP2-37620

Unit Size: 0.1 ml

Store at 4C short term. Aliquot and store at -20C long term. Avoid freeze-thaw cycles.

[www.novusbio.com](http://www.novusbio.com)



[technical@novusbio.com](mailto:technical@novusbio.com)

Protocols, Publications, Related Products, Reviews, Research Tools and Images at:  
[www.novusbio.com/NBP2-37620](http://www.novusbio.com/NBP2-37620)

Updated 5/13/2021 v.20.1

Earn rewards for product  
reviews and publications.

Submit a publication at [www.novusbio.com/publications](http://www.novusbio.com/publications)

Submit a review at [www.novusbio.com/reviews/destination/NBP2-37620](http://www.novusbio.com/reviews/destination/NBP2-37620)



**NBP2-37620**

eEF-2 Antibody (5B6)

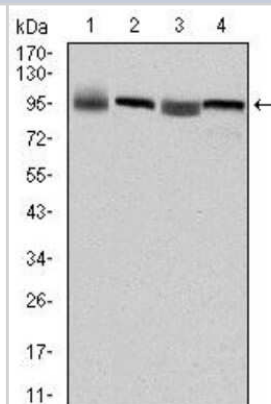
Product Information	
Unit Size	0.1 ml
Concentration	This product is unpurified. The exact concentration of antibody is not quantifiable.
Storage	Store at 4C short term. Aliquot and store at -20C long term. Avoid freeze-thaw cycles.
Clonality	Monoclonal
Clone	5B6
Preservative	0.03% Sodium Azide
Isotype	IgG1
Purity	Unpurified
Buffer	Ascites
Target Molecular Weight	95 kDa

Product Description	
Host	Mouse
Gene ID	1938
Gene Symbol	EEF2
Species	Human
Immunogen	Purified recombinant fragment of human EEF2 expressed in E. Coli.

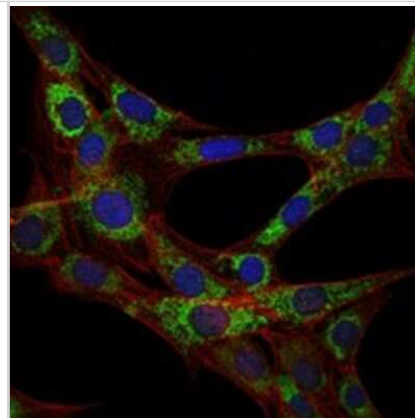
Product Application Details	
Applications	Western Blot, ELISA, Immunocytochemistry/Immunofluorescence, Immunohistochemistry, Immunohistochemistry-Paraffin
Recommended Dilutions	Western Blot 1:500 - 1:2000, ELISA 1:10000, Immunohistochemistry 1:200 - 1:1000, Immunocytochemistry/Immunofluorescence 1:200 - 1:1000, Immunohistochemistry-Paraffin 1:200 - 1:1000

**Images**

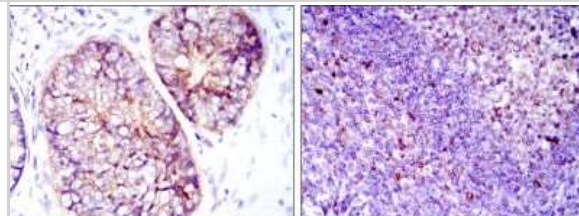
Western Blot: eEF-2 Antibody (5B6) [NBP2-37620] - Western blot analysis using EEF2 mouse mAb against HepG2 (1), Hela (2), HEK293 (3) and A431 (4) cell lysate.



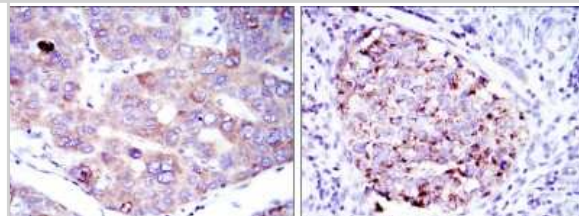
Immunocytochemistry/Immunofluorescence: eEF-2 Antibody (5B6) [NBP2-37620] - Immunofluorescence analysis of 3T3-L1 cells using EEf2 mouse mAb (green). Blue: DRAQ5 fluorescent DNA dye. Red: Actin filaments have been labeled with Alexa Fluor-555 phalloidin.



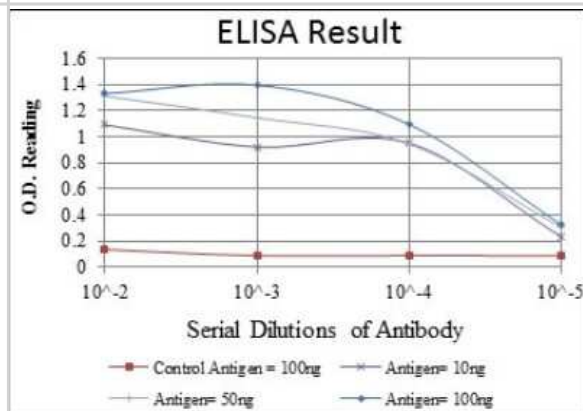
Immunohistochemistry: eEF-2 Antibody (5B6) [NBP2-37620] - Immunohistochemical analysis of paraffin-embedded prostate cancer tissues (left) and tonsil tissues (right) using EEf2 mouse mAb with DAB staining.



Immunohistochemistry: eEF-2 Antibody (5B6) [NBP2-37620] - Immunohistochemical analysis of paraffin-embedded liver cancer tissues (left) and kidney cancer tissues (right) using EEf2 mouse mAb with DAB staining.



ELISA: eEF-2 Antibody (5B6) [NBP2-37620] - Red: Control Antigen (100ng); Purple: Antigen (10ng); Green: Antigen (50ng); Blue: Antigen (100ng);





### **Novus Biologicals USA**

10730 E. Briarwood Avenue  
Centennial, CO 80112  
USA

Phone: 303.730.1950  
Toll Free: 1.888.506.6887  
Fax: 303.730.1966  
novus@novusbio.com

### **Bio-Techne Canada**

21 Canmotor Ave  
Toronto, ON M8Z 4E6  
Canada

Phone: 905.827.6400  
Toll Free: 855.668.8722  
Fax: 905.827.6402  
canada.inquires@bio-techne.com

### **Bio-Techne Ltd**

19 Barton Lane  
Abingdon Science Park  
Abingdon, OX14 3NB, United Kingdom

Phone: (44) (0) 1235 529449  
Free Phone: 0800 37 34 15  
Fax: (44) (0) 1235 533420  
info.EMEA@bio-techne.com

### **General Contact Information**

www.novusbio.com  
Technical Support: technical@novusbio.com  
Orders: orders@novusbio.com  
General: novus@novusbio.com

### **Limitations**

This product is for research use only and is not approved for use in humans or in clinical diagnosis. Primary Antibodies are guaranteed for 1 year from date of receipt.

For more information on our 100% guarantee, please visit [www.novusbio.com/guarantee](http://www.novusbio.com/guarantee)

Earn gift cards/discounts by submitting a review: [www.novusbio.com/reviews/submit/NBP2-37620](http://www.novusbio.com/reviews/submit/NBP2-37620)

Earn gift cards/discounts by submitting a publication using this product:  
[www.novusbio.com/publications](http://www.novusbio.com/publications)

