

Product Datasheet

c-jun Antibody (5B1) NBP2-37576

Unit Size: 0.1 ml

Store at 4C short term. Aliquot and store at -20C long term. Avoid freeze-thaw cycles.

www.novusbio.com



technical@novusbio.com

Protocols, Publications, Related Products, Reviews, Research Tools and Images at:
www.novusbio.com/NBP2-37576

Updated 5/6/2020 v.20.1

Earn rewards for product
reviews and publications.

Submit a publication at www.novusbio.com/publications

Submit a review at www.novusbio.com/reviews/destination/NBP2-37576



NBP2-37576

c-jun Antibody (5B1)

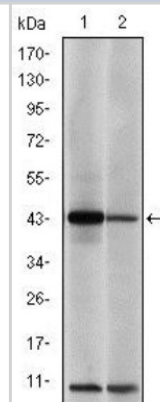
Product Information	
Unit Size	0.1 ml
Concentration	This product is unpurified. The exact concentration of antibody is not quantifiable.
Storage	Store at 4C short term. Aliquot and store at -20C long term. Avoid freeze-thaw cycles.
Clonality	Monoclonal
Clone	5B1
Preservative	0.03% Sodium Azide
Isotype	IgG1
Purity	Unpurified
Buffer	Ascites
Target Molecular Weight	43 kDa

Product Description	
Host	Mouse
Gene ID	3725
Gene Symbol	JUN
Species	Human, Mouse, Primate
Reactivity Notes	Please note that this antibody is reactive to Mouse and derived from the same host, Mouse. Mouse-On-Mouse blocking reagent may be needed for IHC and ICC experiments to reduce high background signal. You can find these reagents under catalog numbers PK-2200-NB and MP-2400-NB. Please contact Technical Support if you have any questions..

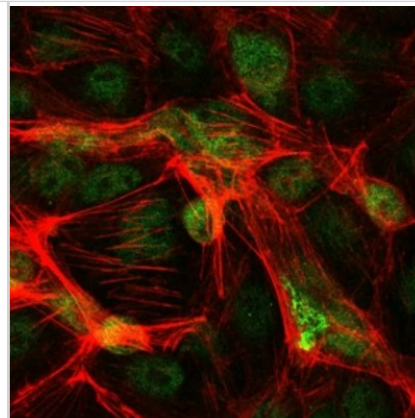
Product Application Details	
Applications	Western Blot, ELISA, Flow Cytometry, Immunocytochemistry/Immunofluorescence, Immunohistochemistry, Immunohistochemistry-Paraffin
Recommended Dilutions	Western Blot 1:500 - 1:2000, Flow Cytometry 1:200 - 1:400, ELISA 1:10000, Immunohistochemistry 1:200 - 1:1000, Immunocytochemistry/Immunofluorescence 1:200 - 1:1000, Immunohistochemistry-Paraffin

Images

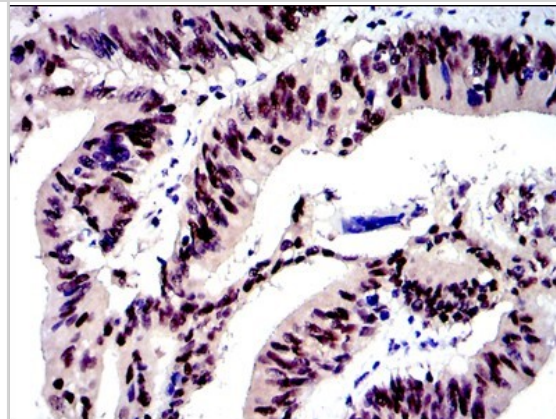
Western Blot: c-jun Antibody (5B1) [NBP2-37576] - Analysis using c-Jun mouse mAb against NIH/3T3 (1) and Cos7 (2) cell lysate.



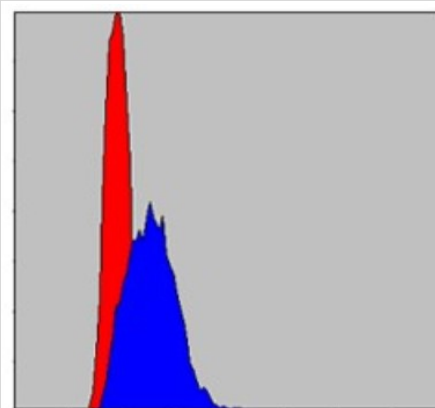
Immunocytochemistry/Immunofluorescence: c-jun Antibody (5B1) [NBP2-37576] - Analysis of PC-2 cells using c-Jun mouse mAb (green). Red: Actin filaments have been labeled with Alexa Fluor-555 phalloidin.



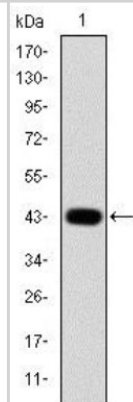
Immunohistochemistry-Paraffin: c-jun Antibody (5B1) [NBP2-37576] - Analysis of human rectum cancer tissues using c-Jun mouse mAb with DAB staining.



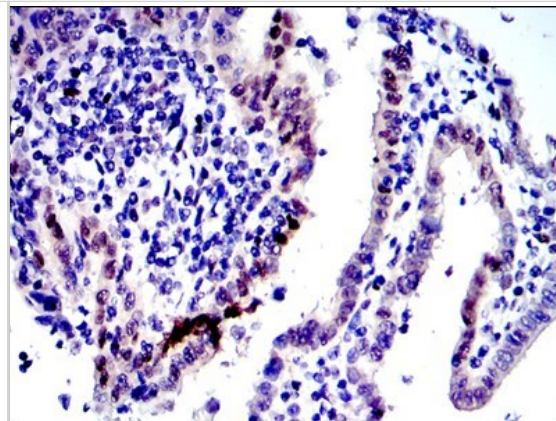
Flow Cytometry: c-jun Antibody (5B1) [NBP2-37576] - Analysis of HepG2 cells using c-Jun mouse mAb (blue) and negative control (red).



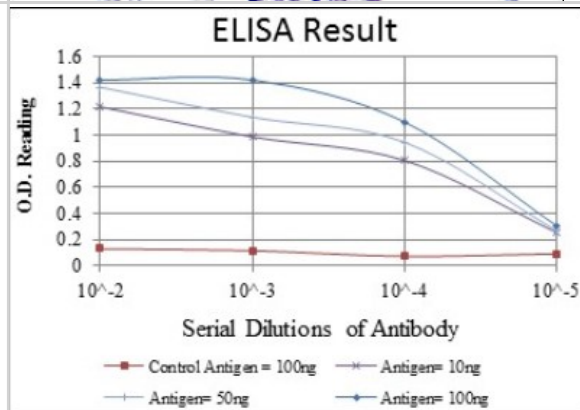
Western Blot: c-jun Antibody (5B1) [NBP2-37576] - Analysis using c-Jun mAb against human c-Jun (AA: 199-331) recombinant protein.



Immunohistochemistry-Paraffin: c-jun Antibody (5B1) [NBP2-37576] - Analysis of human intima cancer tissues using c-Jun mouse mAb with DAB staining.



ELISA: c-jun Antibody (5B1) [NBP2-37576] - Red: Control Antigen (100ng); Purple: Antigen (10ng); Green: Antigen (50ng); Blue: Antigen (100ng);





Novus Biologicals USA

10730 E. Briarwood Avenue
Centennial, CO 80112
USA

Phone: 303.730.1950
Toll Free: 1.888.506.6887
Fax: 303.730.1966
novus@novusbio.com

Novus Biologicals Canada

461 North Service Road West, Unit B37
Oakville, ON L6M 2V5
Canada

Phone: 905.827.6400
Toll Free: 855.668.8722
Fax: 905.827.6402
canada@novusbio.com

Novus Biologicals Europe

19 Barton Lane
Abingdon Science Park
Abingdon, OX14 3NB, United Kingdom

Phone: (44) (0) 1235 529449
Free Phone: 0800 37 34 15
Fax: (44) (0) 1235 533420
info@bio-techne.com

General Contact Information

www.novusbio.com
Technical Support: technical@novusbio.com
Orders: orders@novusbio.com
General: novus@novusbio.com

Limitations

This product is for research use only and is not approved for use in humans or in clinical diagnosis. Primary Antibodies are guaranteed for 1 year from date of receipt.

For more information on our 100% guarantee, please visit www.novusbio.com/guarantee

Earn gift cards/discounts by submitting a review: www.novusbio.com/reviews/submit/NBP2-37576

Earn gift cards/discounts by submitting a publication using this product:
www.novusbio.com/publications

