

Product Datasheet

Skp1 Antibody (1H9) NBP2-37522

Unit Size: 0.1 ml

Store at 4C short term. Aliquot and store at -20C long term. Avoid freeze-thaw cycles.

www.novusbio.com



technical@novusbio.com

Protocols, Publications, Related Products, Reviews, Research Tools and Images at:
www.novusbio.com/NBP2-37522

Updated 5/13/2021 v.20.1

Earn rewards for product
reviews and publications.

Submit a publication at www.novusbio.com/publications

Submit a review at www.novusbio.com/reviews/destination/NBP2-37522



NBP2-37522

Skp1 Antibody (1H9)

Product Information

Unit Size	0.1 ml
Concentration	This product is unpurified. The exact concentration of antibody is not quantifiable.
Storage	Store at 4C short term. Aliquot and store at -20C long term. Avoid freeze-thaw cycles.
Clonality	Monoclonal
Clone	1H9
Preservative	0.03% Sodium Azide
Isotype	IgG1
Purity	Unpurified
Buffer	Ascites
Target Molecular Weight	19 kDa

Product Description

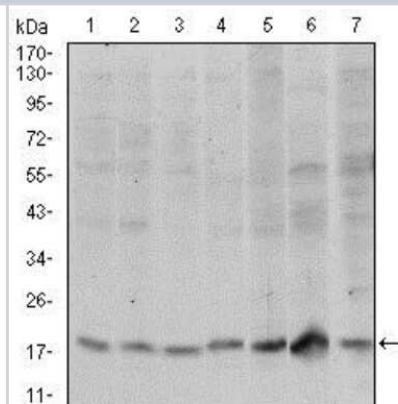
Host	Mouse
Gene ID	6500
Gene Symbol	SKP1
Species	Human
Immunogen	Purified recombinant fragment of human SKP1 expressed in E. Coli.

Product Application Details

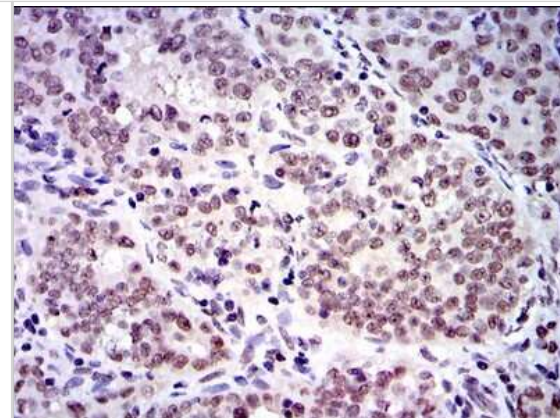
Applications	Western Blot, ELISA, Flow Cytometry, Immunohistochemistry, Immunohistochemistry-Paraffin
Recommended Dilutions	Western Blot 1:500 - 1:2000, Flow Cytometry 1:200 - 1:400, ELISA 1:10000, Immunohistochemistry 1:200 - 1:1000, Immunohistochemistry-Paraffin 1:200 - 1:1000

Images

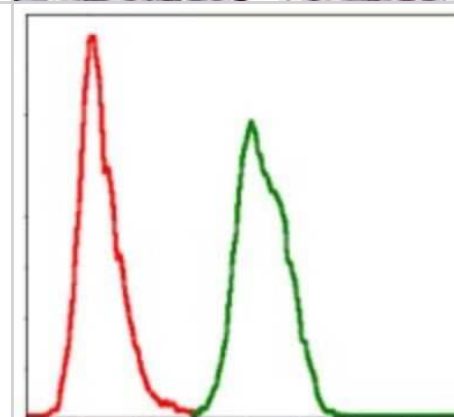
Western Blot: Skp1 Antibody (1H9) [NBP2-37522] - Western blot analysis using SKP1 mouse mAb against Hela (1), RAJI (2), Jurkat (3), MCF-7 (4), HepG2 (5), PC-12 (6) and Cos7 (7) cell lysate.



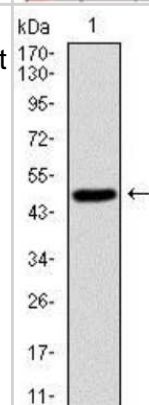
Immunohistochemistry: Skp1 Antibody (1H9) [NBP2-37522] - Immunohistochemical analysis of paraffin-embedded cervical cancer tissues using SKP1 mouse mAb with DAB staining.



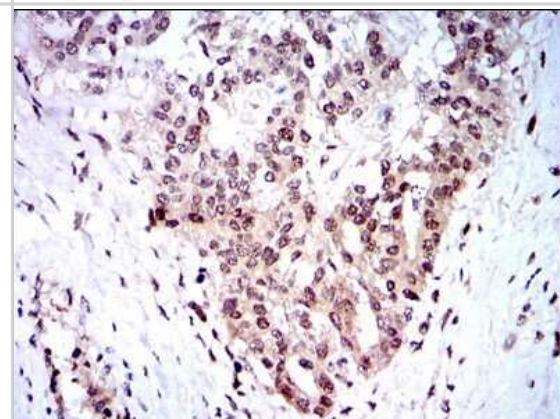
Flow Cytometry: Skp1 Antibody (1H9) [NBP2-37522] - Flow cytometric analysis of Hela cells using SKP1 mouse mAb (green) and negative control (red).



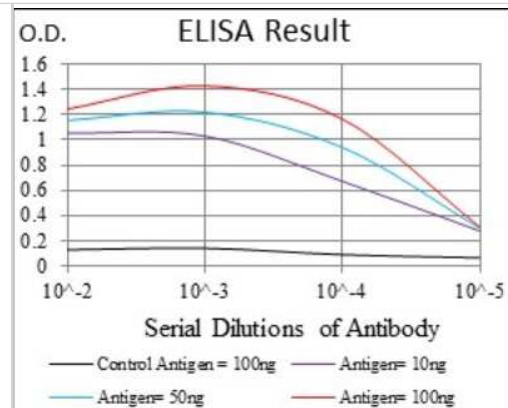
Western Blot: Skp1 Antibody (1H9) [NBP2-37522] - Western blot analysis using SKP1 mAb against human SKP1 (AA: 1-160) recombinant protein. (Expected MW is 50 kDa)



Immunohistochemistry: Skp1 Antibody (1H9) [NBP2-37522] - Immunohistochemical analysis of paraffin-embedded ovarian cancer tissues using SKP1 mouse mAb with DAB staining.



ELISA: Skp1 Antibody (1H9) [NBP2-37522] - Red: Control Antigen (100ng); Purple: Antigen (10ng); Green: Antigen (50ng); Blue: Antigen (100ng);





Novus Biologicals USA

10730 E. Briarwood Avenue
Centennial, CO 80112
USA

Phone: 303.730.1950
Toll Free: 1.888.506.6887
Fax: 303.730.1966
novus@novusbio.com

Bio-Techne Canada

21 Canmotor Ave
Toronto, ON M8Z 4E6
Canada

Phone: 905.827.6400
Toll Free: 855.668.8722
Fax: 905.827.6402
canada.inquires@bio-techne.com

Bio-Techne Ltd

19 Barton Lane
Abingdon Science Park
Abingdon, OX14 3NB, United Kingdom
Phone: (44) (0) 1235 529449
Free Phone: 0800 37 34 15
Fax: (44) (0) 1235 533420
info.EMEA@bio-techne.com

General Contact Information

www.novusbio.com
Technical Support: technical@novusbio.com
Orders: orders@novusbio.com
General: novus@novusbio.com

Limitations

This product is for research use only and is not approved for use in humans or in clinical diagnosis. Primary Antibodies are guaranteed for 1 year from date of receipt.

For more information on our 100% guarantee, please visit www.novusbio.com/guarantee

Earn gift cards/discounts by submitting a review: www.novusbio.com/reviews/submit/NBP2-37522

Earn gift cards/discounts by submitting a publication using this product:
www.novusbio.com/publications

