

Product Datasheet

MCAM/CD146 Antibody (6C3F1) - BSA Free NBP2-37318

Unit Size: 0.1 ml

Store at 4C short term. Aliquot and store at -20C long term. Avoid freeze-thaw cycles.

www.novusbio.com



technical@novusbio.com

Protocols, Publications, Related Products, Reviews, Research Tools and Images at:
www.novusbio.com/NBP2-37318

Updated 7/17/2023 v.20.1

Earn rewards for product
reviews and publications.

Submit a publication at www.novusbio.com/publications

Submit a review at www.novusbio.com/reviews/destination/NBP2-37318



NBP2-37318

MCAM/CD146 Antibody (6C3F1) - BSA Free

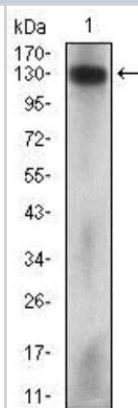
Product Information	
Unit Size	0.1 ml
Concentration	1 mg/ml
Storage	Store at 4C short term. Aliquot and store at -20C long term. Avoid freeze-thaw cycles.
Clonality	Monoclonal
Clone	6C3F1
Preservative	0.05% Sodium Azide
Isotype	IgG1
Purity	Protein A or G purified
Buffer	PBS
Target Molecular Weight	71.6 kDa

Product Description	
Host	Mouse
Gene ID	4162
Gene Symbol	MCAM
Species	Human
Immunogen	Purified recombinant fragment of human MCAM (AA: 84-189) expressed in E. Coli.

Product Application Details	
Applications	Western Blot, ELISA, Immunohistochemistry, Immunohistochemistry-Paraffin
Recommended Dilutions	Western Blot 1:500 - 1:2000, ELISA 1:10000, Immunohistochemistry 1:200 - 1:1000, Immunohistochemistry-Paraffin 1:200 - 1:1000

Images

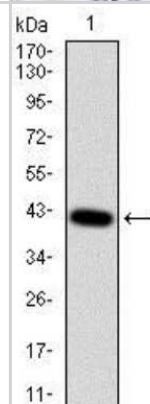
Western Blot: MCAM/CD146 Antibody (6C3F1) [NBP2-37318] - Western blot analysis using MCAM mouse mAb against Hela cell lysate.



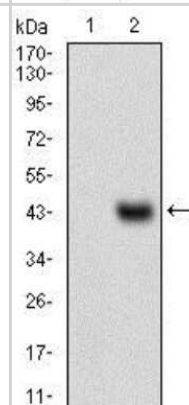
Immunohistochemistry: MCAM/CD146 Antibody (6C3F1) [NBP2-37318] - Immunohistochemical analysis of paraffin-embedded kidney tissues using MCAM mouse mAb with DAB staining.



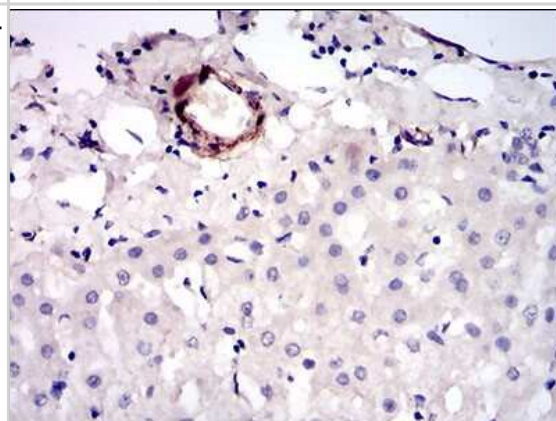
Western Blot: MCAM/CD146 Antibody (6C3F1) [NBP2-37318] - Western blot analysis using MCAM mAb against human MCAM recombinant protein. (Expected MW is 37.7 kDa)



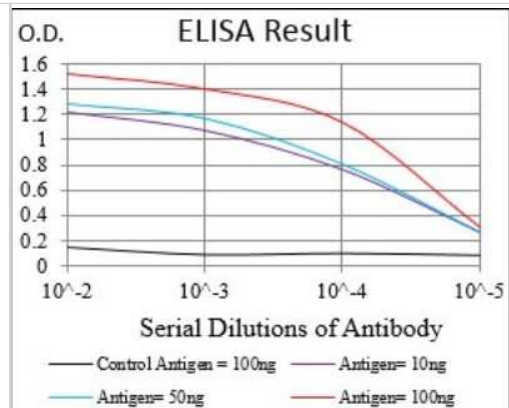
Western Blot: MCAM/CD146 Antibody (6C3F1) [NBP2-37318] - Western blot analysis using MCAM mAb against HEK293 (1) and MCAM (AA: 84-189)-hlgGfc transfected HEK293 (2) cell lysate.



Immunohistochemistry: MCAM/CD146 Antibody (6C3F1) [NBP2-37318] - Immunohistochemical analysis of paraffin-embedded liver cancer tissues using MCAM mouse mAb with DAB staining.



ELISA: MCAM/CD146 Antibody (6C3F1) [NBP2-37318] - Red: Control Antigen (100ng); Purple: Antigen (10ng); Green: Antigen (50ng); Blue: Antigen (100ng);





Novus Biologicals USA

10730 E. Briarwood Avenue
Centennial, CO 80112
USA

Phone: 303.730.1950
Toll Free: 1.888.506.6887
Fax: 303.730.1966
novus@novusbio.com

Bio-Techne Canada

21 Canmotor Ave
Toronto, ON M8Z 4E6
Canada

Phone: 905.827.6400
Toll Free: 855.668.8722
Fax: 905.827.6402
canada.inquires@bio-techne.com

Bio-Techne Ltd

19 Barton Lane
Abingdon Science Park
Abingdon, OX14 3NB, United Kingdom

Phone: (44) (0) 1235 529449
Free Phone: 0800 37 34 15
Fax: (44) (0) 1235 533420
info.EMEA@bio-techne.com

General Contact Information

www.novusbio.com
Technical Support: technical@novusbio.com
Orders: orders@novusbio.com
General: novus@novusbio.com

Limitations

This product is for research use only and is not approved for use in humans or in clinical diagnosis. Primary Antibodies are guaranteed for 1 year from date of receipt.

For more information on our 100% guarantee, please visit www.novusbio.com/guarantee

Earn gift cards/discounts by submitting a review: www.novusbio.com/reviews/submit/NBP2-37318

Earn gift cards/discounts by submitting a publication using this product:
www.novusbio.com/publications

