

Product Datasheet

EpCAM/TROP1 Antibody (7B5C10) - BSA Free NBP2-37256

Unit Size: 0.1 ml

Store at 4C short term. Aliquot and store at -20C long term. Avoid freeze-thaw cycles.

www.novusbio.com



technical@novusbio.com

Protocols, Publications, Related Products, Reviews, Research Tools and Images at:
www.novusbio.com/NBP2-37256

Updated 7/17/2023 v.20.1

Earn rewards for product
reviews and publications.

Submit a publication at www.novusbio.com/publications

Submit a review at www.novusbio.com/reviews/destination/NBP2-37256



NBP2-37256

EpCAM/TROP1 Antibody (7B5C10) - BSA Free

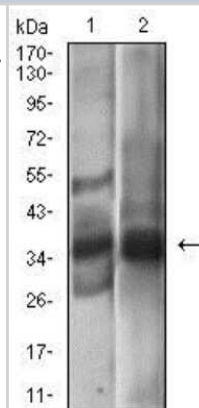
Product Information	
Unit Size	0.1 ml
Concentration	1 mg/ml
Storage	Store at 4C short term. Aliquot and store at -20C long term. Avoid freeze-thaw cycles.
Clonality	Monoclonal
Clone	7B5C10
Preservative	0.05% Sodium Azide
Isotype	IgG1
Purity	Protein A or G purified
Buffer	PBS
Target Molecular Weight	35 kDa

Product Description	
Host	Mouse
Gene ID	4072
Gene Symbol	EPCAM
Species	Human
Immunogen	Purified recombinant fragment of human EPCAM (AA: 24-265) expressed in E. Coli.

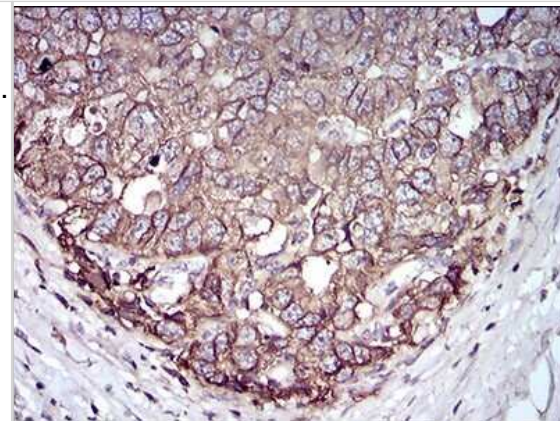
Product Application Details	
Applications	Western Blot, ELISA, Flow Cytometry, Immunohistochemistry, Immunohistochemistry-Paraffin, CyTOF-ready
Recommended Dilutions	Western Blot 1:500 - 1:2000, Flow Cytometry 1:200 - 1:400, ELISA 1:10000, Immunohistochemistry 1:200 - 1:1000, Immunohistochemistry-Paraffin 1:200 - 1:1000, CyTOF-ready
Application Notes	This antibody is Cytof ready.

Images

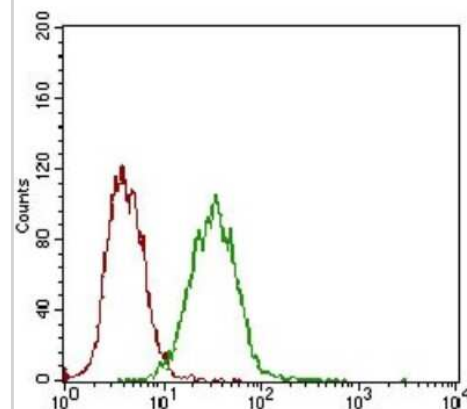
Western Blot: EpCAM/TROP1 Antibody (7B5C10) [NBP2-37256] - Western blot analysis using EPCAM mouse mAb against A431 (1), MCF-7 (2) cell lysate.



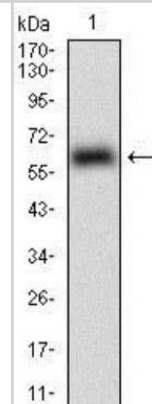
Immunohistochemistry: EpCAM/TROP1 Antibody (7B5C10) [NBP2-37256] - Immunohistochemical analysis of paraffin-embedded esophageal cancer tissues using EPCAM mouse mAb with DAB staining.



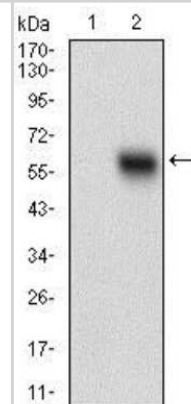
Flow Cytometry: EpCAM/TROP1 Antibody (7B5C10) [NBP2-37256] - Flow cytometric analysis of A431 cells using EPCAM mouse mAb (green) and negative control (red).



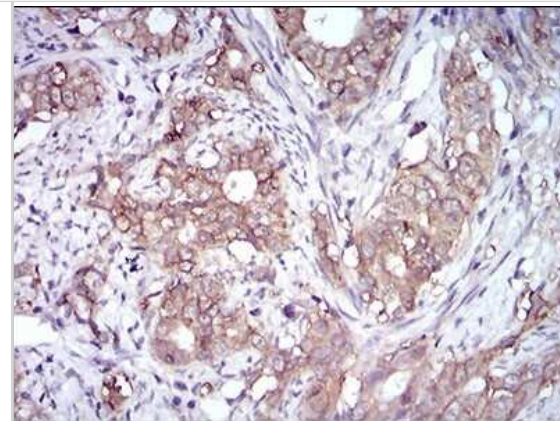
Western Blot: EpCAM/TROP1 Antibody (7B5C10) [NBP2-37256] - Western blot analysis using EPCAM mAb against human EPCAM (AA: 24-265) recombinant protein. (Expected MW is 53.4 kDa)



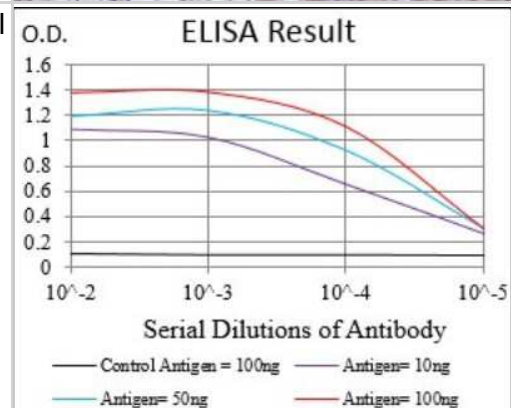
Western Blot: EpCAM/TROP1 Antibody (7B5C10) [NBP2-37256] - Western blot analysis using EPCAM mAb against HEK293 (1) and EPCAM (AA: 24-265)-hlgGfc transfected HEK293 (2) cell lysate.



Immunohistochemistry: EpCAM/TROP1 Antibody (7B5C10) [NBP2-37256] - Immunohistochemical analysis of paraffin-embedded cervical cancer tissues using EPCAM mouse mAb with DAB staining.



ELISA: EpCAM/TROP1 Antibody (7B5C10) [NBP2-37256] - Red: Control Antigen (100ng); Purple: Antigen (10ng); Green: Antigen (50ng); Blue: Antigen (100ng);





Novus Biologicals USA

10730 E. Briarwood Avenue
Centennial, CO 80112
USA

Phone: 303.730.1950
Toll Free: 1.888.506.6887
Fax: 303.730.1966
novus@novusbio.com

Bio-Techne Canada

21 Canmotor Ave
Toronto, ON M8Z 4E6
Canada

Phone: 905.827.6400
Toll Free: 855.668.8722
Fax: 905.827.6402
canada.inquires@bio-techne.com

Bio-Techne Ltd

19 Barton Lane
Abingdon Science Park
Abingdon, OX14 3NB, United Kingdom

Phone: (44) (0) 1235 529449
Free Phone: 0800 37 34 15
Fax: (44) (0) 1235 533420
info.EMEA@bio-techne.com

General Contact Information

www.novusbio.com
Technical Support: technical@novusbio.com
Orders: orders@novusbio.com
General: novus@novusbio.com

Limitations

This product is for research use only and is not approved for use in humans or in clinical diagnosis. Primary Antibodies are guaranteed for 1 year from date of receipt.

For more information on our 100% guarantee, please visit www.novusbio.com/guarantee

Earn gift cards/discounts by submitting a review: www.novusbio.com/reviews/submit/NBP2-37256

Earn gift cards/discounts by submitting a publication using this product:
www.novusbio.com/publications

