

Product Datasheet

GRASP55 Antibody (CL2610) - BSA Free NBP2-36779

Unit Size: 0.1 ml

Store at 4C short term. Aliquot and store at -20C long term. Avoid freeze-thaw cycles.

www.novusbio.com



technical@novusbio.com

Protocols, Publications, Related Products, Reviews, Research Tools and Images at:
www.novusbio.com/NBP2-36779

Updated 2/27/2025 v.20.1

Earn rewards for product
reviews and publications.

Submit a publication at www.novusbio.com/publications

Submit a review at www.novusbio.com/reviews/destination/NBP2-36779



NBP2-36779

GRASP55 Antibody (CL2610) - BSA Free

Product Information

Unit Size	0.1 ml
Concentration	Concentrations vary lot to lot. See vial label for concentration. If unlisted please contact technical services.
Storage	Store at 4C short term. Aliquot and store at -20C long term. Avoid freeze-thaw cycles.
Clonality	Monoclonal
Clone	CL2610
Preservative	0.02% Sodium Azide
Isotype	IgG2b
Purity	Protein A purified
Buffer	PBS (pH 7.2) and 40% Glycerol

Product Description

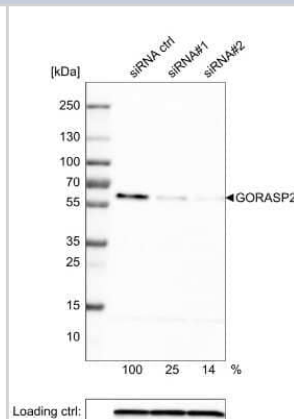
Host	Mouse
Gene ID	26003
Gene Symbol	GORASP2
Species	Human
Immunogen	This antibody was developed using a recombinant protein derived from Q9H8Y8, with the exact immunogen sequence remaining proprietary.

Product Application Details

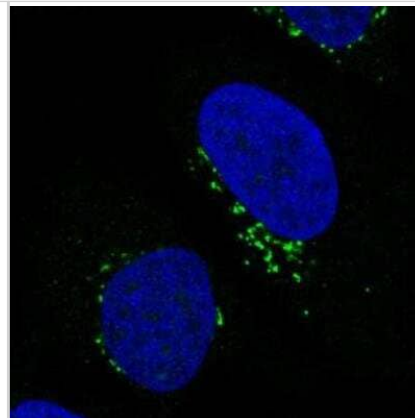
Applications	Western Blot, Immunocytochemistry/ Immunofluorescence, Immunohistochemistry, Immunohistochemistry-Paraffin, Knockdown Validated
Recommended Dilutions	Western Blot 1 ug/ml, Immunohistochemistry 1:5000-1:10000, Immunocytochemistry/ Immunofluorescence 2-10 ug/ml, Immunohistochemistry-Paraffin 1:5000-1:10000, Knockdown Validated
Application Notes	For IHC-Paraffin, HIER pH 6 retrieval is recommended. ICC/IF, Fixation Permeabilization: Use PFA/Triton X-100.

Images

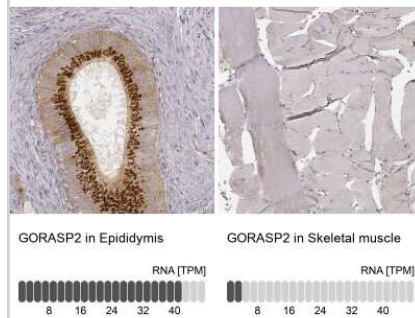
Western Blot: GRASP55 Antibody (CL2610) [NBP2-36779] - analysis in U-251MG cells transfected with control siRNA, target specific siRNA probe #1 and #2, using Anti-GORASP2 antibody. Remaining relative intensity is presented. Loading control: Anti-PPIB.



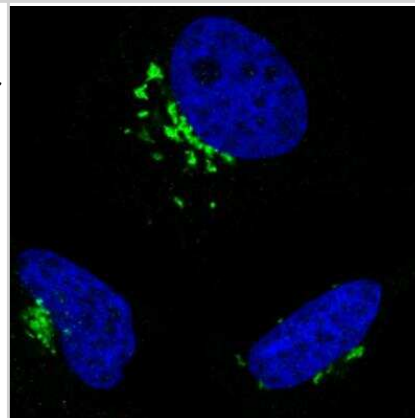
Immunocytochemistry/Immunofluorescence: GRASP55 Antibody (CL2610) [NBP2-36779] - Staining in U2OS cell line with Anti-GORASP2 monoclonal antibody, showing specific staining of the golgi apparatus in green. Microtubule- and nuclear probes are visualized in red and blue respectively (where available). Antibody staining is shown in green.



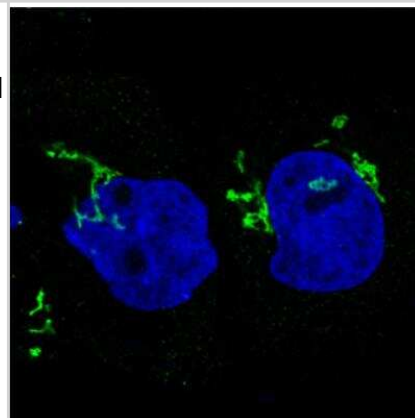
Immunohistochemistry-Paraffin: GRASP55 Antibody (CL2610) [NBP2-36779] - Staining in human epididymis and skeletal muscle tissues. Corresponding GORASP2 RNA-seq data are presented for the same tissues.



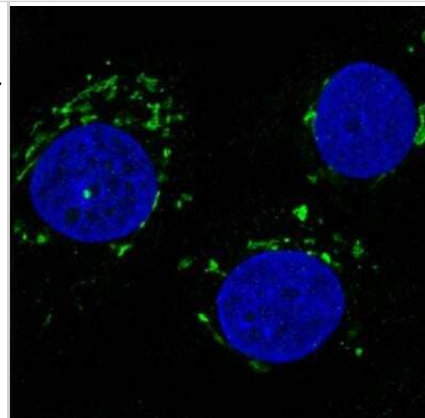
Immunocytochemistry/Immunofluorescence: GRASP55 Antibody (CL2610) [NBP2-36779] - Staining in HeLa cell line showing specific staining of the golgi apparatus in green. Microtubule-staining and nuclear probes are visualized in red and blue respectively (where available). Antibody staining is shown in green.



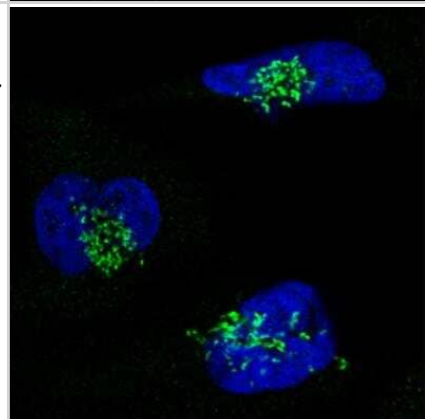
Immunocytochemistry/Immunofluorescence: GRASP55 Antibody (CL2610) [NBP2-36779] - Staining of human cell line A431 showing specific staining of the golgi apparatus in green. Microtubule-staining and nuclear probes are visualized in red and blue respectively (where available). Antibody staining is shown in green.



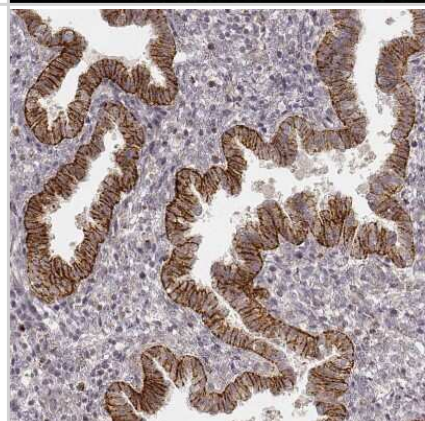
Immunocytochemistry/Immunofluorescence: GRASP55 Antibody (CL2610) [NBP2-36779] - Staining in MCF7 cell line showing specific staining of the golgi apparatus in green. Microtubule-staining and nuclear probes are visualized in red and blue respectively (where available). Antibody staining is shown in green.



Immunocytochemistry/Immunofluorescence: GRASP55 Antibody (CL2610) [NBP2-36779] - Staining in U251 cell line showing specific staining of the golgi apparatus in green. Microtubule-staining and nuclear probes are visualized in red and blue respectively (where available). Antibody staining is shown in green.



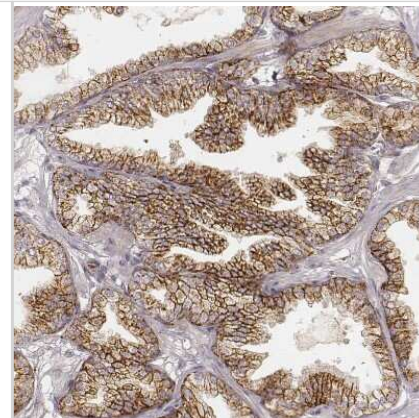
Immunohistochemistry-Paraffin: GRASP55 Antibody (CL2610) [NBP2-36779] - Staining of human endometrium shows moderate to strong membranous and cytoplasmic positivity in glandular cells.



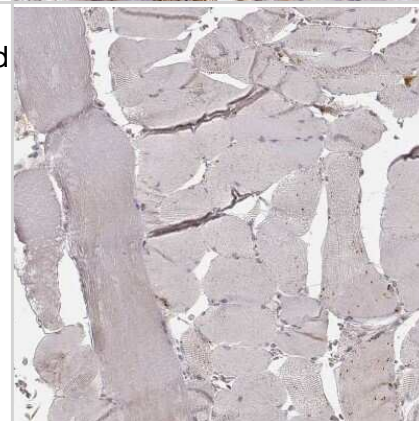
Immunohistochemistry-Paraffin: GRASP55 Antibody (CL2610) [NBP2-36779] - Staining of human epididymis shows strong positivity in glandular cells.



Immunohistochemistry-Paraffin: GRASP55 Antibody (CL2610) [NBP2-36779] - Staining of human prostate shows moderate to strong membranous positivity in glandular cells.



Immunohistochemistry-Paraffin: GRASP55 Antibody (CL2610) [NBP2-36779] - Staining of human skeletal muscle shows no positivity in striated muscle fibers as expected.





Novus Biologicals USA

10730 E. Briarwood Avenue
Centennial, CO 80112
USA
Phone: 303.730.1950
Toll Free: 1.888.506.6887
Fax: 303.730.1966
nb-customerservice@bio-techne.com

Bio-Techne Canada

21 Canmotor Ave
Toronto, ON M8Z 4E6
Canada
Phone: 905.827.6400
Toll Free: 855.668.8722
Fax: 905.827.6402
canada.inquires@bio-techne.com

Bio-Techne Ltd

19 Barton Lane
Abingdon Science Park
Abingdon, OX14 3NB, United Kingdom
Phone: (44) (0) 1235 529449
Free Phone: 0800 37 34 15
Fax: (44) (0) 1235 533420
info.EMEA@bio-techne.com

General Contact Information

www.novusbio.com
Technical Support: nb-technical@bio-techne.com
Orders: nb-customerservice@bio-techne.com
General: novus@novusbio.com

Products Related to NBP2-36779

NBP2-36779PEP	GRASP55 Recombinant Protein Antigen
HAF007	Goat anti-Mouse IgG Secondary Antibody [HRP]
NB720-B	Rabbit anti-Mouse IgG (H+L) Secondary Antibody [Biotin]
NBP2-27231	Mouse IgG2b Isotype Control (MPC-11)

Limitations

This product is for research use only and is not approved for use in humans or in clinical diagnosis. Primary Antibodies are guaranteed for 1 year from date of receipt.

For more information on our 100% guarantee, please visit www.novusbio.com/guarantee

Earn gift cards/discounts by submitting a review: www.novusbio.com/reviews/submit/NBP2-36779

Earn gift cards/discounts by submitting a publication using this product:
www.novusbio.com/publications

