

# Product Datasheet

## SLC31A1/CTR1 Antibody (3C7.1B7) NBP2-36574-0.1mg

Unit Size: 0.1 mg

Store at 4C short term. Aliquot and store at -20C long term. Avoid freeze-thaw cycles.

[www.novusbio.com](http://www.novusbio.com)



[technical@novusbio.com](mailto:technical@novusbio.com)

### Publications: 1

Protocols, Publications, Related Products, Reviews, Research Tools and Images at:  
[www.novusbio.com/NBP2-36574](http://www.novusbio.com/NBP2-36574)

Updated 11/21/2020 v.20.1

Earn rewards for product  
reviews and publications.

Submit a publication at [www.novusbio.com/publications](http://www.novusbio.com/publications)

Submit a review at [www.novusbio.com/reviews/destination/NBP2-36574](http://www.novusbio.com/reviews/destination/NBP2-36574)



**NBP2-36574-0.1mg**

SLC31A1/CTR1 Antibody (3C7.1B7)

**Product Information**

<b>Unit Size</b>	0.1 mg
<b>Concentration</b>	1.0 mg/ml
<b>Storage</b>	Store at 4C short term. Aliquot and store at -20C long term. Avoid freeze-thaw cycles.
<b>Clonality</b>	Monoclonal
<b>Clone</b>	3C7.1B7
<b>Preservative</b>	0.05% Sodium Azide
<b>Isotype</b>	IgG2b Kappa
<b>Purity</b>	Protein G purified
<b>Buffer</b>	PBS

**Product Description**

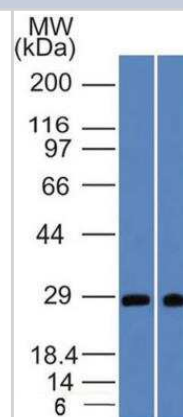
<b>Host</b>	Mouse
<b>Gene ID</b>	1317
<b>Gene Symbol</b>	SLC31A1
<b>Species</b>	Human, Mouse
<b>Reactivity Notes</b>	Mouse reactivity reported in scientific literature (PMID:32010131).
<b>Immunogen</b>	Two synthetic peptides made to internal sequences of human SLC31A1/CTR1 protein (sequences found between amino acids 50-150) [UniProt O15431]

**Product Application Details**

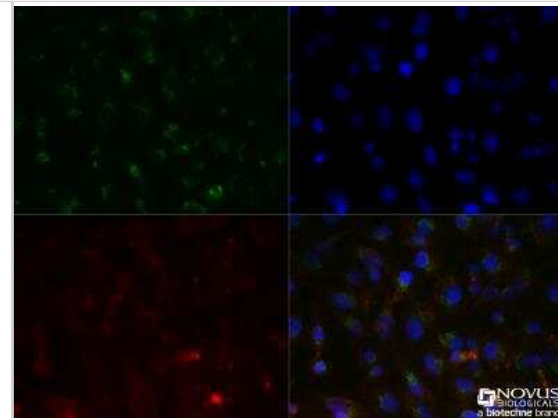
<b>Applications</b>	Western Blot, Immunocytochemistry/ Immunofluorescence, Immunohistochemistry, Immunohistochemistry-Paraffin
<b>Recommended Dilutions</b>	Western Blot 2 ug/mL, Immunohistochemistry 5 ug/mL, Immunocytochemistry/ Immunofluorescence 1:50, Immunohistochemistry-Paraffin 5 ug/mL

**Images**

Western Blot: SLC31A1/CTR1 Antibody (3C7.1B7) [NBP2-36574] - Analysis of SLC31A1/CTR1 in MCF7 and HeLa at 2 ug/mL



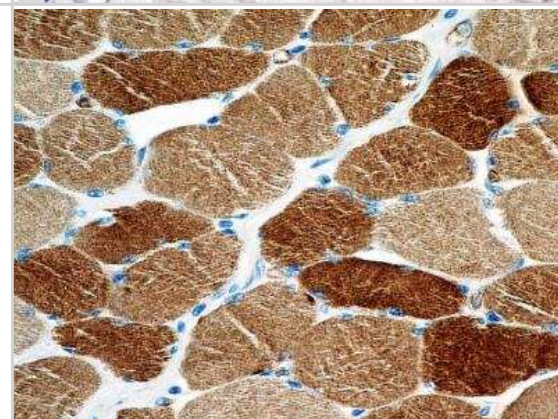
**Immunocytochemistry/Immunofluorescence: SLC31A1/CTR1 Antibody (3C7.1B7) [NBP2-36574]** - HepG2 cells were fixed for 10 minutes using 10% formalin and then permeabilized for 5 minutes using 1X TBS + 0.5% Triton X-100. The cells were incubated with anti SLC31A1/CTR1 (3C7.1B7) at 1:50 overnight at 4C and detected with an anti-mouse Dylight 488 (Green) at 1:500. Actin was detected with Phalloidin 568 (Red) at 1:200. Nuclei were counterstained with DAPI (Blue). Cells were imaged using a 40X objective.



**Immunohistochemistry-Paraffin: SLC31A1/CTR1 Antibody (3C7.1B7) [NBP2-36574]** - Analysis of a FFPE tissue section of normal skin from a human breast cancer patient (NBP2-30234) using purified CTR1/SLC31A1 antibody clone 3C7.1B7 at 5 ug/mL concentration. The antibody developed a strong cytoplasmic staining in the outer layer of stratum spinosum and the cells of stratum granulosum/ granular layer of skin epidermis.



**Immunohistochemistry-Paraffin: SLC31A1/CTR1 Antibody (3C7.1B7) [NBP2-36574]** - Analysis of a FFPE tissue section of human skeletal muscle from a breast cancer patient (NBP2-30234) using purified CTR1/SLC31A1 antibody clone 3C7.1B7 at 5 ug/mL. The antibody generated moderate to strong cytoplasmic staining in the muscle cells/ myocytes.



**Immunohistochemistry-Paraffin: SLC31A1/CTR1 Antibody (3C7.1B7) [NBP2-36574]** - Analysis of a FFPE tissue section of normal breast tissue from a human breast cancer patient (NBP2-30234) using purified CTR1/SLC31A1 antibody clone 3C7.1B7 at 5 ug/mL. The antibody generated strong cytoplasmic staining in the myo-epithelial cells in the tested section.



## Publications

Cichon I, Ortmann W, Bednarz A et al. Reduced Neutrophil Extracellular Trap (NET) Formation During Systemic Inflammation in Mice With Menkes Disease and Wilson Disease: Copper Requirement for NET Release Front. Immunol. 2020-01-15 [PMID: 32010131] (ICC/IF, Mouse)



### **Novus Biologicals USA**

10730 E. Briarwood Avenue  
Centennial, CO 80112  
USA  
Phone: 303.730.1950  
Toll Free: 1.888.506.6887  
Fax: 303.730.1966  
nb-customerservice@bio-techne.com

### **Bio-Techne Canada**

21 Canmotor Ave  
Toronto, ON M8Z 4E6  
Canada  
Phone: 905.827.6400  
Toll Free: 855.668.8722  
Fax: 905.827.6402  
canada.inquires@bio-techne.com

### **Bio-Techne Ltd**

19 Barton Lane  
Abingdon Science Park  
Abingdon, OX14 3NB, United Kingdom  
Phone: (44) (0) 1235 529449  
Free Phone: 0800 37 34 15  
Fax: (44) (0) 1235 533420  
info.EMEA@bio-techne.com

### **General Contact Information**

www.novusbio.com  
Technical Support: nb-technical@bio-  
techne.com  
Orders: nb-customerservice@bio-techne.com  
General: novus@novusbio.com

### **Limitations**

This product is for research use only and is not approved for use in humans or in clinical diagnosis. Primary Antibodies are guaranteed for 1 year from date of receipt.

For more information on our 100% guarantee, please visit [www.novusbio.com/guarantee](http://www.novusbio.com/guarantee)

Earn gift cards/discounts by submitting a review: [www.novusbio.com/reviews/submit/NBP2-36574](http://www.novusbio.com/reviews/submit/NBP2-36574)

Earn gift cards/discounts by submitting a publication using this product:  
[www.novusbio.com/publications](http://www.novusbio.com/publications)

