

# Product Datasheet

## EMILIN1 Antibody (C11A8) - Azide and BSA Free NBP2-36338

Unit Size: 0.1 mg

Store at 4C short term. Aliquot and store at -20C long term. Avoid freeze-thaw cycles.

[www.novusbio.com](http://www.novusbio.com)



[technical@novusbio.com](mailto:technical@novusbio.com)

Protocols, Publications, Related Products, Reviews, Research Tools and Images at:  
[www.novusbio.com/NBP2-36338](http://www.novusbio.com/NBP2-36338)

Updated 9/9/2025 v.20.1

Earn rewards for product  
reviews and publications.

Submit a publication at [www.novusbio.com/publications](http://www.novusbio.com/publications)

Submit a review at [www.novusbio.com/reviews/destination/NBP2-36338](http://www.novusbio.com/reviews/destination/NBP2-36338)



**NBP2-36338**

EMILIN1 Antibody (C11A8) - Azide and BSA Free

**Product Information**

|                                    |  |
|------------------------------------|--|
| <b>Unit Size</b>                   | 0.1 mg   |
| <b>Concentration</b>               | LYOPH mg/ml  |
| <b>Storage</b>                     | Store at 4C short term. Aliquot and store at -20C long term. Avoid freeze-thaw cycles.               |
| <b>Clonality</b>                   | Monoclonal   |
| <b>Clone</b>                       | C11A8  |
| <b>Preservative</b>                | No Preservative  |
| <b>Reconstitution Instructions</b> | Centrifuge vial prior to opening. Reconstitute in sterile water to a concentration of 0.1-1.0 mg/ml. |
| <b>Isotype</b>                     | IgG2a Kappa  |
| <b>Purity</b>                      | Protein G purified   |
| <b>Buffer</b>                      | PBS  |

**Product Description**

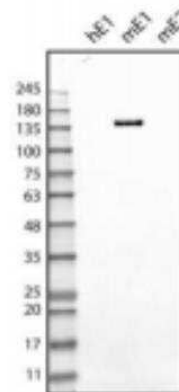
|                    |  |
|--------------------|--|
| <b>Description</b> | Novus Biologicals Rat EMILIN1 Antibody (C11A8) - Azide and BSA Free (NBP2-36338) is a monoclonal antibody validated for use in IHC, WB and ICC/IF. All Novus Biologicals antibodies are covered by our 100% guarantee. |
| <b>Host</b>        | Rat  |
| <b>Gene ID</b>     | 11117  |
| <b>Gene Symbol</b> | EMILIN1  |
| <b>Species</b>     | Mouse  |
| <b>Immunogen</b>   | recombinant mouse Emilin-1   |

**Product Application Details**

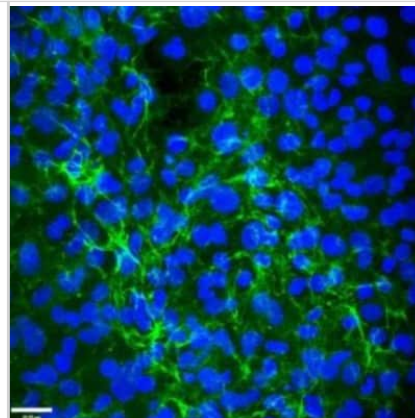
|                              |  |
|------------------------------|--|
| <b>Applications</b>          | Western Blot, Immunocytochemistry/ Immunofluorescence, Immunohistochemistry, Immunohistochemistry-Frozen   |
| <b>Recommended Dilutions</b> | Western Blot 2-10 ug/ml, Immunohistochemistry 1:10-1:500, Immunocytochemistry/ Immunofluorescence 1:10-1:500, Immunohistochemistry-Frozen 1:10-1:500 |

**Images**

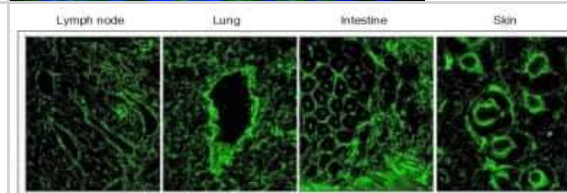
Western Blot: EMILIN1 Antibody (C11A8) [NBP2-36338] - Western blot on recombinant protein obtained from supernatant of cells expressing human EMILIN1 (hE1), mouse EMILIN1 (mE1), mouse EMILIN2 (mE2).



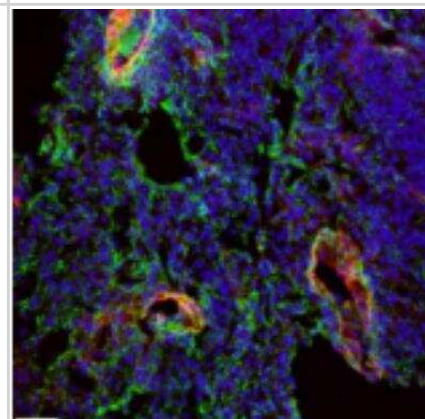
Immunocytochemistry/Immunofluorescence: EMILIN1 Antibody (C11A8) [NBP2-36338] - Positive staining of EMILIN1 (green) in mouse lymphatic endothelial cells (LAEC). Nuclei are stained in blue. Scale bar 38  $\mu$ m.



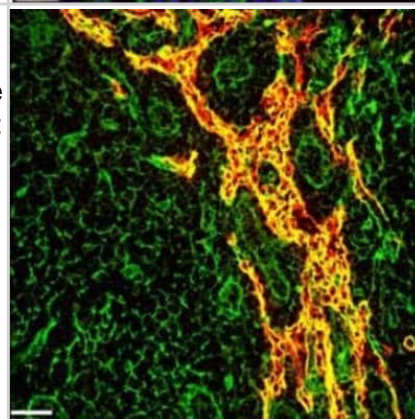
Immunohistochemistry-Frozen: EMILIN1 Antibody (C11A8) [NBP2-36338] - EMILIN1 is expressed in association with lymphatic vessels. Cryostat sections of normal mouse tissues stained with anti-EMILIN1 (green) antibodies. In all mouse tissues and organs examined, EMILIN1 was uniformly distributed in the stroma. In the skin, EMILIN1 staining colocalizes with LYVE-1-positive lymphatic vessels surrounding hair follicles. In the small intestine, EMILIN1 colocalizes with LYVE-1-positive lacteals and submucosal lymphatic vessels. At higher magnification, in the lung and lymph nodes, it is more evident that EMILIN1 is distributed at the abluminal surfaces of LECs. In the lymph node, EMILIN1-positive fibers connecting LECs to the surrounding ECM are evident.



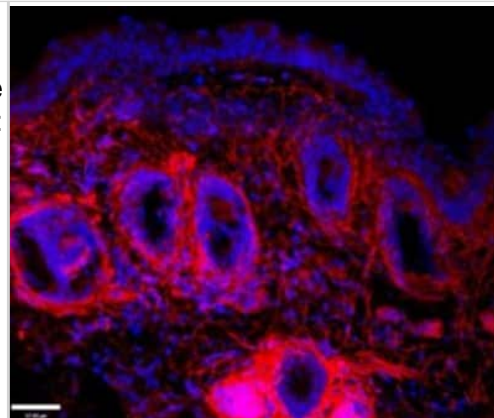
Immunocytochemistry/Immunofluorescence: EMILIN1 Antibody (C11A8) [NBP2-36338] - Positive staining for EMILIN1 (green) in mouse lung tissue is both detected in lung parenchymal fibers and associated with lymphatic vessel structures. Lyve-1 (red) is used as lymphatic vessel marker. Blue, nuclei. Scale bar: 37.00  $\mu$ m



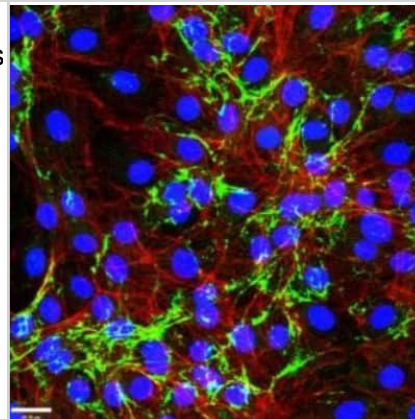
Immunocytochemistry/Immunofluorescence: EMILIN1 Antibody (C11A8) [NBP2-36338] - Positive staining for EMILIN1 (green) in mouse lymph node. In red, lymphatic vessels positive for Lyve-1. Yellow represents the close association of EMILIN1 with lymphatic vessel structures. Scale bar: 37.00  $\mu$ m



Immunocytochemistry/Immunofluorescence: EMILIN1 Antibody (C11A8) [NBP2-36338] - Positive staining for EMILIN1 (green) in mouse lymph node. In red, lymphatic vessels positive for Lyve-1. Yellow represents the close association of EMILIN1 with lymphatic vessel structures. Scale bar: 37.00 um Positive staining for EMILIN1 (red) in mouse skin. Blue, nuclei; Scale bar: 37.00 um



Immunocytochemistry/Immunofluorescence: EMILIN1 Antibody (C11A8) [NBP2-36338] - Positive staining of EMILIN1 (green) in mouse fibroblasts (NIH 3T3). cytoskeleton is stained in red, nuclei in blue. Scale bar 28 um.





### **Novus Biologicals USA**

10730 E. Briarwood Avenue  
Centennial, CO 80112  
USA  
Phone: 303.730.1950  
Toll Free: 1.888.506.6887  
Fax: 303.730.1966  
nb-customerservice@bio-techne.com

### **Bio-Techne Canada**

21 Canmotor Ave  
Toronto, ON M8Z 4E6  
Canada  
Phone: 905.827.6400  
Toll Free: 855.668.8722  
Fax: 905.827.6402  
canada.inquires@bio-techne.com

### **Bio-Techne Ltd**

19 Barton Lane  
Abingdon Science Park  
Abingdon, OX14 3NB, United Kingdom  
Phone: (44) (0) 1235 529449  
Free Phone: 0800 37 34 15  
Fax: (44) (0) 1235 533420  
info.EMEA@bio-techne.com

### **General Contact Information**

www.novusbio.com  
Technical Support: nb-technical@bio-techne.com  
Orders: nb-customerservice@bio-techne.com  
General: novus@novusbio.com

### **Products Related to NBP2-36338**

---

|                    |  |
|--------------------|--|
| HAF005             | Goat anti-Rat IgG Secondary Antibody [HRP]           |
| F0105B             | Goat anti-Rat IgG Secondary Antibody [Phycoerythrin] |
| NBP1-43321-0.5mg   | Rat IgG2a Kappa Light Chain Isotype Control (R2a)    |
| H00011117-P01-10ug | Recombinant Human EMILIN1 GST (N-Term) Protein       |

---

### **Limitations**

This product is for research use only and is not approved for use in humans or in clinical diagnosis. Primary Antibodies are guaranteed for 1 year from date of receipt.

For more information on our 100% guarantee, please visit [www.novusbio.com/guarantee](http://www.novusbio.com/guarantee)

Earn gift cards/discounts by submitting a review: [www.novusbio.com/reviews/submit/NBP2-36338](http://www.novusbio.com/reviews/submit/NBP2-36338)

Earn gift cards/discounts by submitting a publication using this product:  
[www.novusbio.com/publications](http://www.novusbio.com/publications)

