

# Product Datasheet

## Recombinant Mouse Bcl-xL Protein NBP2-35141-2ug

Unit Size: 2ug

Store at -20 to -70C as supplied. After reconstitution, store at 2 to 8C for 1 month and at -20 to -70C for long term storage. Avoid repeated freeze-thaw cycles.

[www.novusbio.com](http://www.novusbio.com)



[technical@novusbio.com](mailto:technical@novusbio.com)

Protocols, Publications, Related Products, Reviews, Research Tools and Images at:  
[www.novusbio.com/NBP2-35141](http://www.novusbio.com/NBP2-35141)

Updated 1/25/2025 v.20.1

Earn rewards for product  
reviews and publications.

Submit a publication at [www.novusbio.com/publications](http://www.novusbio.com/publications)

Submit a review at [www.novusbio.com/reviews/destination/NBP2-35141](http://www.novusbio.com/reviews/destination/NBP2-35141)



**NBP2-35141-2ug**

## Recombinant Mouse Bcl-xL Protein

**Product Information**

<b>Unit Size</b>	2ug
<b>Concentration</b>	Lyoph
<b>Storage</b>	Store at -20 to -70C as supplied. After reconstitution, store at 2 to 8C for 1 month and at -20 to -70C for long term storage. Avoid repeated freeze-thaw cycles.
<b>Preservative</b>	5% Trehalose
<b>Reconstitution Instructions</b>	Recommended to centrifuge prior to opening. Reconstitute in sterile distilled water or aqueous buffer containing 0.1% BSA to a concentration of 0.1-1.0mg/mL.
<b>Purity</b>	> 97 % pure by SDS-PAGE and HPLC
<b>Buffer</b>	Lyophilized from a 0.2 um filtered concentrated solution in 2 x PBS, pH 7.4.
<b>Target Molecular Weight</b>	23.7 kDa

**Product Description**

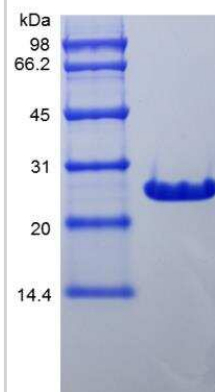
<b>Description</b>	<p>A single non-glycosylated polypeptide chain containing 211 amino acids corresponding to Bcl-xL <b>Source:</b> <i>E. coli</i></p> <p><b>Uniprot ID:</b> Q64373</p> <p><b>Amino Acid Sequence:</b> SQSNRELVD FLSYKLSQKG YWSQFSDVE ENRTEAPEET EAERETPSAI NGNPSWHLAD SPAVNGATGH SSSLDAREVI PMAAVKQALR EAGDEFELRY RRAFSDLTSQ LHITPGTAYQ SFEQVVNELF RDGVNWGRIV AFFSFGGALC VESVDKEMQV LVSRIASWMA TYLNDHLEPW IQENGGWDTF VDLYGNNAEA ESRKGQERFN R</p>
<b>Gene ID</b>	598
<b>Gene Symbol</b>	BCL2L1
<b>Species</b>	Mouse
<b>Details of Functionality</b>	Test in Process.
<b>Endotoxin Note</b>	Less than 0.1 EU/ug of Bcl-xL as determined by LAL method.

**Product Application Details**

<b>Applications</b>	SDS-Page
<b>Recommended Dilutions</b>	SDS-Page

**Images**

SDS-Page: Mouse Bcl-xL Protein [NBP2-35141]





### **Novus Biologicals USA**

10730 E. Briarwood Avenue  
Centennial, CO 80112  
USA  
Phone: 303.730.1950  
Toll Free: 1.888.506.6887  
Fax: 303.730.1966  
nb-customerservice@bio-techne.com

### **Bio-Techne Canada**

21 Canmotor Ave  
Toronto, ON M8Z 4E6  
Canada  
Phone: 905.827.6400  
Toll Free: 855.668.8722  
Fax: 905.827.6402  
canada.inquires@bio-techne.com

### **Bio-Techne Ltd**

19 Barton Lane  
Abingdon Science Park  
Abingdon, OX14 3NB, United Kingdom  
Phone: (44) (0) 1235 529449  
Free Phone: 0800 37 34 15  
Fax: (44) (0) 1235 533420  
info.EMEA@bio-techne.com

### **General Contact Information**

[www.novusbio.com](http://www.novusbio.com)  
Technical Support: [nb-technical@bio-techne.com](mailto:nb-technical@bio-techne.com)  
Orders: [nb-customerservice@bio-techne.com](mailto:nb-customerservice@bio-techne.com)  
General: [novus@novusbio.com](mailto:novus@novusbio.com)

### **Limitations**

This product is for research use only and is not approved for use in humans or in clinical diagnosis. Peptides and proteins are guaranteed for 3 months from date of receipt.

For more information on our 100% guarantee, please visit [www.novusbio.com/guarantee](http://www.novusbio.com/guarantee)

Earn gift cards/discounts by submitting a review: [www.novusbio.com/reviews/submit/NBP2-35141](http://www.novusbio.com/reviews/submit/NBP2-35141)

Earn gift cards/discounts by submitting a publication using this product:  
[www.novusbio.com/publications](http://www.novusbio.com/publications)

