

Product Datasheet

Recombinant Mouse IL-36 alpha/IL-1F6 Protein NBP2-35127-2ug

Unit Size: 2ug

Store at -20 to -70C as supplied. After reconstitution, store at 2 to 8C for 1 month and at -20 to -70C for long term storage. Avoid repeated freeze-thaw cycles.

www.novusbio.com



technical@novusbio.com

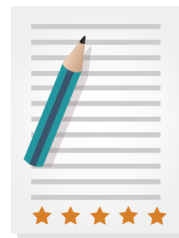
Protocols, Publications, Related Products, Reviews, Research Tools and Images at:
www.novusbio.com/NBP2-35127

Updated 1/25/2025 v.20.1

Earn rewards for product
reviews and publications.

Submit a publication at www.novusbio.com/publications

Submit a review at www.novusbio.com/reviews/destination/NBP2-35127



NBP2-35127-2ug

Recombinant Mouse IL-36 alpha/IL-1F6 Protein

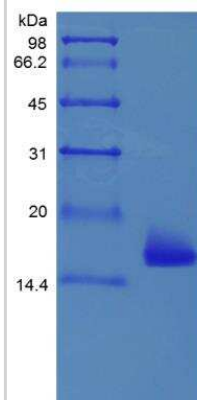
Product Information	
Unit Size	2ug
Concentration	Lyoph
Storage	Store at -20 to -70C as supplied. After reconstitution, store at 2 to 8C for 1 month and at -20 to -70C for long term storage. Avoid repeated freeze-thaw cycles.
Preservative	Trehalose
Reconstitution Instructions	Recommended to centrifuge prior to opening. Reconstitute in sterile distilled water or aqueous buffer containing 0.1% BSA to a concentration of 0.1-1.0mg/mL. Apportion stock solutions into working aliquots and store at <-20C.
Purity	>95%, by SDS-PAGE and HPLC
Buffer	Lyophilized from a 0.2 um filtered concentrated solution in PBS, 1 mM DTT, 3 % trehalose.
Target Molecular Weight	17.1 kDa

Product Description	
Description	A single non-glycosylated polypeptide chain containing 153 amino acids corresponding to IL-36 alpha/IL-1F6 Source: <i>E. coli</i> Amino Acid Sequence: RAASPSLRHV QDLSSRVWIL QNNILTAVPR KEQTVPTIT LLPCQYLDL ETNRGDPTYM GVQRPMSCLF CTKDGEQPV LQLGEGNIMEM YNKKEPVKAS LFYHKKSGTT STFESAAPPG WFIAVCSKGS CPLILTQELG EIFITDFEMI VVH
Gene ID	27179
Gene Symbol	IL36A
Species	Mouse
Details of Functionality	IL36 alpha Protein is fully biologically active when compared to standard. The ED50 as determined by inducing IL-6 secretion in murine NIH/3T3 cells is less than 25 ng/ml, corresponding to a specific activity of > 4.0 x 10 ⁴ IU/mg.
Endotoxin Note	Less than 1 EU/ug of IL-36 alpha/IL-1F6 as determined by LAL method.

Product Application Details	
Applications	SDS-Page, Bioactivity
Recommended Dilutions	SDS-Page, Bioactivity

Images

SDS-Page: Mouse IL-36 alpha/IL-1F6 153 a.a Protein [NBP2-35127]





Novus Biologicals USA

10730 E. Briarwood Avenue
Centennial, CO 80112
USA
Phone: 303.730.1950
Toll Free: 1.888.506.6887
Fax: 303.730.1966
nb-customerservice@bio-techne.com

Bio-Techne Canada

21 Canmotor Ave
Toronto, ON M8Z 4E6
Canada
Phone: 905.827.6400
Toll Free: 855.668.8722
Fax: 905.827.6402
canada.inquires@bio-techne.com

Bio-Techne Ltd

19 Barton Lane
Abingdon Science Park
Abingdon, OX14 3NB, United Kingdom
Phone: (44) (0) 1235 529449
Free Phone: 0800 37 34 15
Fax: (44) (0) 1235 533420
info.EMEA@bio-techne.com

General Contact Information

www.novusbio.com
Technical Support: nb-technical@bio-techne.com
Orders: nb-customerservice@bio-techne.com
General: novus@novusbio.com

Limitations

This product is for research use only and is not approved for use in humans or in clinical diagnosis. Peptides and proteins are guaranteed for 3 months from date of receipt.

For more information on our 100% guarantee, please visit www.novusbio.com/guarantee

Earn gift cards/discounts by submitting a review: www.novusbio.com/reviews/submit/NBP2-35127

Earn gift cards/discounts by submitting a publication using this product:
www.novusbio.com/publications

