

Product Datasheet

Recombinant Mouse IL-1 beta/IL-1F2 Protein NBP2-35109-2ug

Unit Size: 2ug

Store at -20 to -70C as supplied. After reconstitution, store at 2 to 8C for 1 month and at -20 to -70C for long term storage. Avoid repeated freeze-thaw cycles.

www.novusbio.com



technical@novusbio.com

Publications: 1

Protocols, Publications, Related Products, Reviews, Research Tools and Images at:
www.novusbio.com/NBP2-35109

Updated 1/25/2025 v.20.1

Earn rewards for product
reviews and publications.

Submit a publication at www.novusbio.com/publications

Submit a review at www.novusbio.com/reviews/destination/NBP2-35109



NBP2-35109-2ug

Recombinant Mouse IL-1 beta/IL-1F2 Protein

Product Information	
Unit Size	2ug
Concentration	Lyoph
Storage	Store at -20 to -70C as supplied. After reconstitution, store at 2 to 8C for 1 month and at -20 to -70C for long term storage. Avoid repeated freeze-thaw cycles.
Preservative	5% Trehalose
Reconstitution Instructions	Recommended to centrifuge prior to opening. Reconstitute in sterile distilled water or aqueous buffer containing 0.1% BSA to a concentration of 0.1-1.0mg/mL.
Purity	>95%, by SDS-PAGE and HPLC
Buffer	Lyophilized from a 0.2 um filtered solution in PBS, pH 7.4, 0.02 % Tween-20.
Target Molecular Weight	17.5 kDa

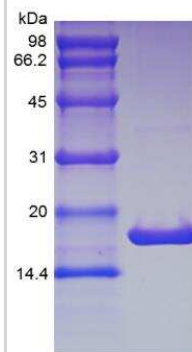
Product Description	
Description	<p>A single non-glycosylated polypeptide chain containing 152 amino acids corresponding to IL-1 beta/IL-1F2 Source: <i>E. coli</i></p> <p>Uniprot ID: P10749</p> <p>Amino Acid Sequence: VPIRQLHYRL RDEQQKSLVL SDPYELKALH LNGQNINQQV IFSMSFVQGE PSNDKIPVAL GLKGKNLYLS CVMKDGTPTL QLESVDPKQY PKKKMEKRFV FNKIEVKSKV EFESAEPNW YISTSQAEHK PVFLGNNSGQ DIIDFTMESV SS</p>
Gene ID	3553
Gene Symbol	IL1B
Species	Mouse
Details of Functionality	IL-1 beta/IL-1F2 protein is fully biologically active when compared to standard. The ED50 as determined by a cell proliferation assay using murine D10S cells is less than 2 pg/ml, corresponding to a specific activity of > 5.0 x 10 ⁸ IU/mg
Endotoxin Note	Less than 1 EU/ug of IL-1 beta/IL-1F2 as determined by LAL method.

Product Application Details	
Applications	SDS-Page, Bioactivity
Recommended Dilutions	SDS-Page, Bioactivity



Images

SDS-Page: Mouse IL-1 beta/IL-1F2 Protein [NBP2-35109]



Publications

Mcknight Q, Jenkins S, Li X et Al. IL-1 beta drives production of FGF-23 at the onset of chronic kidney disease in mice J. Bone Miner. Res. 2020-03-10 [PMID: 32154933]





Novus Biologicals USA

10730 E. Briarwood Avenue
Centennial, CO 80112
USA
Phone: 303.730.1950
Toll Free: 1.888.506.6887
Fax: 303.730.1966
nb-customerservice@bio-techne.com

Bio-Techne Canada

21 Canmotor Ave
Toronto, ON M8Z 4E6
Canada
Phone: 905.827.6400
Toll Free: 855.668.8722
Fax: 905.827.6402
canada.inquires@bio-techne.com

Bio-Techne Ltd

19 Barton Lane
Abingdon Science Park
Abingdon, OX14 3NB, United Kingdom
Phone: (44) (0) 1235 529449
Free Phone: 0800 37 34 15
Fax: (44) (0) 1235 533420
info.EMEA@bio-techne.com

General Contact Information

www.novusbio.com
Technical Support: nb-technical@bio-techne.com
Orders: nb-customerservice@bio-techne.com
General: novus@novusbio.com

Limitations

This product is for research use only and is not approved for use in humans or in clinical diagnosis. Peptides and proteins are guaranteed for 3 months from date of receipt.

For more information on our 100% guarantee, please visit www.novusbio.com/guarantee

Earn gift cards/discounts by submitting a review: www.novusbio.com/reviews/submit/NBP2-35109

Earn gift cards/discounts by submitting a publication using this product:
www.novusbio.com/publications

