

Product Datasheet

Recombinant Protein G His (C-Term) Protein NBP2-35035

Unit Size: 1 mg

Store at -20 to -70C as supplied. After reconstitution, store at 2 to 8C for 1 month and at -20 to -70C for long term storage. Avoid repeated freeze-thaw cycles.

www.novusbio.com



technical@novusbio.com

Protocols, Publications, Related Products, Reviews, Research Tools and Images at:
www.novusbio.com/NBP2-35035

Updated 1/25/2025 v.20.1

Earn rewards for product
reviews and publications.

Submit a publication at www.novusbio.com/publications

Submit a review at www.novusbio.com/reviews/destination/NBP2-35035

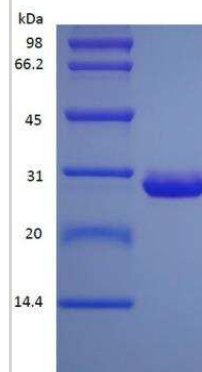


NBP2-35035**Recombinant Protein G His (C-Term) Protein**

Product Information	
Unit Size	1 mg
Concentration	Lyoph
Storage	Store at -20 to -70C as supplied. After reconstitution, store at 2 to 8C for 1 month and at -20 to -70C for long term storage. Avoid repeated freeze-thaw cycles.
Reconstitution Instructions	Reconstitute with distilled water or saline.
Purity	> 97 % pure by SDS-PAGE and HPLC
Buffer	Lyophilized from solution of 20mM PB (pH 7.0)
Target Molecular Weight	22.9 kDa
Product Description	
Description	<p>A single, non-glycosylated biologically active polypeptide chain with a 6xHis tag on the C-terminal containing 210 residues of Protein G protein. It migrates with an apparent molecular mass of 29kDa in SDS-PAGE.</p> <p>Source: <i>E. coli</i></p> <p>Amino Acid Sequence: MGTYKLILNG KTLKGETTTE AVDAATAEKV FKQYANDNGV DGEWTYDDAT KTFTVTEKPE VIDASELTPA VTTYKLIVING KTLKGETTTE AVDAATAEKV FKQYANDNGV DGEWTYDDAT KTFTVTEKPE VIDASELTPA VTTYKLIVING KTLKGETTTK AVDAETA EKAFKQYANDNGV DGVWTYDDAT KTFTVTEKLA AALEHHHHHH</p>
Details of Functionality	Protein G is a genetically engineered protein containing 3 IgG-binding regions of protein G. Cell wall binding region, cell membrane binding region and albumin binding region have been removed from the recombinant Protein G to ensure the maximum specific IgG binding. The recombinant Protein G is ideal for purification of polyclonal or monoclonal IgG antibodies. Protein G binds to various human, mouse and rat IgG subclasses (e.g., human IgG1, IgG2, IgG3, IgG4; mouse IgG2a, IgG2b, IgG3; rat IgG2a, IgG2c). It
Endotoxin Note	Less than 0.1 EU/ug of endotoxin as determined by LAL method.
Product Application Details	
Applications	Functional, SDS-Page, Bioactivity
Recommended Dilutions	Functional, SDS-Page, Bioactivity

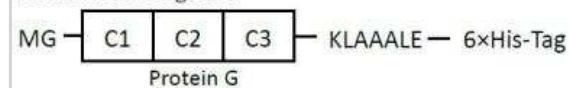
Images

SDS-Page: Protein G His (C-Term) Protein [NBP2-35035]

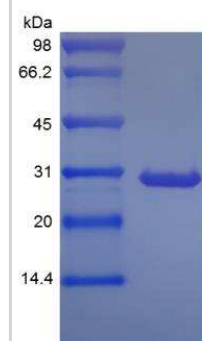


Protein G His (C-Term) Protein [NBP2-35035]

Schematic Diagram:

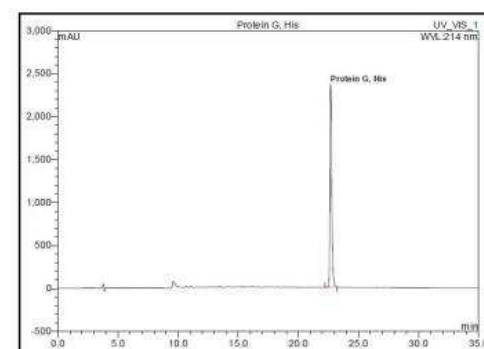


SDS-Page: Protein G His (C-Term) Protein [NBP2-35035]



HPLC: Recombinant Protein G Protein [NBP2-35035] - Protein G His (C-Term) Protein [NBP2-35035]

RP-HPLC





Novus Biologicals USA

10730 E. Briarwood Avenue
Centennial, CO 80112
USA
Phone: 303.730.1950
Toll Free: 1.888.506.6887
Fax: 303.730.1966
nb-customerservice@bio-techne.com

Bio-Techne Canada

21 Canmotor Ave
Toronto, ON M8Z 4E6
Canada
Phone: 905.827.6400
Toll Free: 855.668.8722
Fax: 905.827.6402
canada.inquires@bio-techne.com

Bio-Techne Ltd

19 Barton Lane
Abingdon Science Park
Abingdon, OX14 3NB, United Kingdom
Phone: (44) (0) 1235 529449
Free Phone: 0800 37 34 15
Fax: (44) (0) 1235 533420
info.EMEA@bio-techne.com

General Contact Information

www.novusbio.com
Technical Support: nb-technical@bio-
techne.com
Orders: nb-customerservice@bio-techne.com
General: novus@novusbio.com

Limitations

This product is for research use only and is not approved for use in humans or in clinical diagnosis. Peptides and proteins are guaranteed for 3 months from date of receipt.

For more information on our 100% guarantee, please visit www.novusbio.com/guarantee

Earn gift cards/discounts by submitting a review: www.novusbio.com/reviews/submit/NBP2-35035

Earn gift cards/discounts by submitting a publication using this product:
www.novusbio.com/publications

