

Product Datasheet

Recombinant Human CCL4/MIP-1 beta Protein NBP2-35016-10ug

Unit Size: 10 ug

Store at -20 to -70C as supplied. After reconstitution, store at 2 to 8C for 1 month and at -20 to -70C for long term storage. Avoid repeated freeze-thaw cycles.

www.novusbio.com



technical@novusbio.com

Protocols, Publications, Related Products, Reviews, Research Tools and Images at:
www.novusbio.com/NBP2-35016

Updated 1/25/2025 v.20.1

Earn rewards for product
reviews and publications.

Submit a publication at www.novusbio.com/publications

Submit a review at www.novusbio.com/reviews/destination/NBP2-35016



NBP2-35016-10ug

Recombinant Human CCL4/MIP-1 beta Protein

Product Information

Unit Size	10 ug
Concentration	Lyoph
Storage	Store at -20 to -70C as supplied. After reconstitution, store at 2 to 8C for 1 month and at -20 to -70C for long term storage. Avoid repeated freeze-thaw cycles.
Preservative	No Preservative
Reconstitution Instructions	Recommended to centrifuge prior to opening. Reconstitute in sterile distilled water or aqueous buffer containing 0.1% BSA to a concentration of 0.1-1.0mg/mL.
Purity	>95%, by SDS-PAGE and HPLC
Buffer	Lyophilized from a 0.2 um filtered concentrated solution in 20 mM PB, pH 7.4, 150 mM NaCl.
Target Molecular Weight	7.8 kDa

Product Description

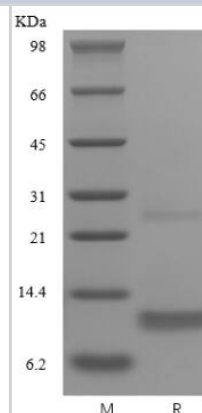
Description	<p>A single non-glycosylated polypeptide chain containing 69 amino acids corresponding to CCL4/MIP-1 beta Source: <i>E. coli</i></p> <p>Uniprot ID: P13236</p> <p>Amino Acid Sequence: APMGSDPPTA CCFSYTARKL PRNFVVDYYE TSSLCSQPAV VFQTKRSKQV CADPSES WVQ EYVDLELN</p>
Gene ID	6351
Gene Symbol	CCL4
Species	Human
Details of Functionality	CCL4/MIP-1 beta protein is fully biologically active when compared to standard. The biological activity determined by a chemotaxis bioassay using human peripheral blood monocytes is in a concentration range of 5.0-20 ng/ml
Endotoxin Note	Less than 1 EU/ug of CCL4/MIP-1 beta as determined by LAL method.

Product Application Details

Applications	SDS-Page, Bioactivity
Recommended Dilutions	SDS-Page, Bioactivity

Images

SDS-Page: Recombinant Human CCL4/MIP-1 beta Protein [NBP2-35016]





Novus Biologicals USA

10730 E. Briarwood Avenue
Centennial, CO 80112
USA
Phone: 303.730.1950
Toll Free: 1.888.506.6887
Fax: 303.730.1966
nb-customerservice@bio-techne.com

Bio-Techne Canada

21 Canmotor Ave
Toronto, ON M8Z 4E6
Canada
Phone: 905.827.6400
Toll Free: 855.668.8722
Fax: 905.827.6402
canada.inquires@bio-techne.com

Bio-Techne Ltd

19 Barton Lane
Abingdon Science Park
Abingdon, OX14 3NB, United Kingdom
Phone: (44) (0) 1235 529449
Free Phone: 0800 37 34 15
Fax: (44) (0) 1235 533420
info.EMEA@bio-techne.com

General Contact Information

www.novusbio.com
Technical Support: nb-technical@bio-techne.com
Orders: nb-customerservice@bio-techne.com
General: novus@novusbio.com

Products Related to NBP2-35016-10ug

NBP2-35080-10ug	Recombinant Mouse CCL4/MIP-1 beta Protein
210-TA-005	TNF-alpha [Unconjugated]
DMB00	CCL4/MIP-1 beta [HRP]
M6000B-1	IL-6 [HRP]

Limitations

This product is for research use only and is not approved for use in humans or in clinical diagnosis. Peptides and proteins are guaranteed for 3 months from date of receipt.

For more information on our 100% guarantee, please visit www.novusbio.com/guarantee

Earn gift cards/discounts by submitting a review: www.novusbio.com/reviews/submit/NBP2-35016

Earn gift cards/discounts by submitting a publication using this product:
www.novusbio.com/publications

