

Product Datasheet

Recombinant Protein A/G Cys (C-Term) Protein NBP2-34999

Unit Size: 1 mg

Store at -20 to -70C as supplied. After reconstitution, store at 2 to 8C for 1 month and at -20 to -70C for long term storage. Avoid repeated freeze-thaw cycles.

www.novusbio.com



technical@novusbio.com

Protocols, Publications, Related Products, Reviews, Research Tools and Images at:
www.novusbio.com/NBP2-34999

Updated 1/25/2025 v.20.1

Earn rewards for product
reviews and publications.

Submit a publication at www.novusbio.com/publications

Submit a review at www.novusbio.com/reviews/destination/NBP2-34999



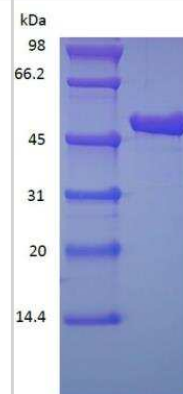
NBP2-34999**Recombinant Protein A/G Cys (C-Term) Protein**

Product Information	
Unit Size	1 mg
Concentration	Lyoph
Storage	Store at -20 to -70C as supplied. After reconstitution, store at 2 to 8C for 1 month and at -20 to -70C for long term storage. Avoid repeated freeze-thaw cycles.
Preservative	No Preservative
Reconstitution Instructions	Reconstitute with distilled water or saline.
Purity	>95%, by SDS-PAGE and HPLC
Buffer	Lyophilized from additive free solution.
Target Molecular Weight	47.8 kDa
Product Description	
Description	<p>A single non-glycosylated polypeptide chain containing 430 amino acids corresponding to Protein A/G with a Cys on the C-terminus Source: <i>E. coli</i></p> <p>Amino Acid Sequence: NAAQHDEAQQ NAFYQVLNMP NLNADQRNGF IQSLKDDPSQ SANVLGEAQK LNDSPAPKAD AQQNNFNKDQ QSAFYEILNM PNLNEAQRNG FIQSLKDDPS QSTNVLGEAK KLNESQAPKA DNNFNKEQQN AFYEILNMPN LNEEQRNGFI QSLKDDPSQS ANLLSEAKKL NESQAPKADN KFNKEQQNAF YEILHLPNLN EEQRNGFIQS LKDDPSQSAN LLAEAKKLND AQAPKADNKF NKEQQNAFYE ILHLPNLTEE QRNGFIQSLK DDPSVSKEIL AEAKKLND AQ APKEEDSLEG SGSGTYKLIL NGKTLKGETT TEAVDAATAE KVFKQYANDN GVDGEWYDD ATKFTVTEK PEVIDASELT PAVTTYKLVI NGKTLKGETT TKAVDAETA E KAFKQYANDN GVDGVWYDD ATKFTVTEC</p>
Specificity/Sensitivity	Protein A/G binds to various human, mouse and rat IgG subclasses (e.g., human IgG1, IgG2, IgG3, IgG4; mouse IgG2a, IgG2b, IgG3; rat IgG2a, IgG2c). It also binds to total IgG from cow, goat, sheep, house, rabbit, guinea pig, pig, dog and cat.
Details of Functionality	Protein A/G is a genetically engineered protein containing 5 IgG-binding regions of protein A and 2 of protein G. Cell wall binding region, cell membrane binding region and albumin binding region have been removed from the recombinant Protein A/G to ensure the maximum specific IgG binding. The recombinant Protein A/G is ideal for purification of polyclonal or monoclonal IgG antibodies. Protein A/G binds to various human, mouse and rat IgG subclasses (e.g., human IgG1, IgG2, IgG3, IgG4; mouse IgG2a, IgG2b, I
Endotoxin Note	Less than 0.1 EU/ug of Protein A/G as determined by LAL method.
Product Application Details	
Applications	SDS-Page, Bioactivity
Recommended Dilutions	SDS-Page, Bioactivity



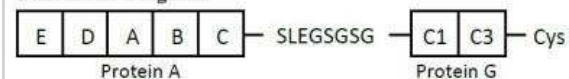
Images

SDS-Page: Protein A/G Cys (C-Term) Protein [NBP2-34999]



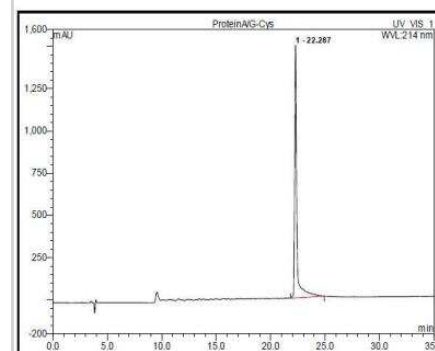
Protein A/G Cys (C-Term) Protein [NBP2-34999]

Schematic Diagram:



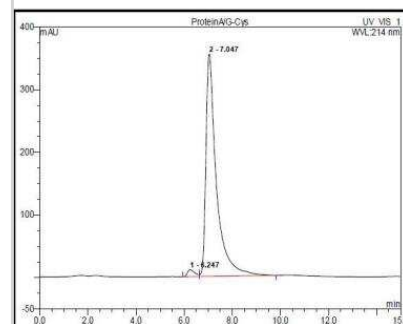
HPLC: Recombinant Protein A/G Protein [NBP2-34999] - Protein A/G Cys (C-Term) Protein [NBP2-34999]

RP-HPLC



HPLC: Recombinant Protein A/G Protein [NBP2-34999] - Protein A/G Cys (C-Term) Protein [NBP2-34999]

SEC-HPLC





Novus Biologicals USA

10730 E. Briarwood Avenue
Centennial, CO 80112
USA
Phone: 303.730.1950
Toll Free: 1.888.506.6887
Fax: 303.730.1966
nb-customerservice@bio-techne.com

Bio-Techne Canada

21 Canmotor Ave
Toronto, ON M8Z 4E6
Canada
Phone: 905.827.6400
Toll Free: 855.668.8722
Fax: 905.827.6402
canada.inquires@bio-techne.com

Bio-Techne Ltd

19 Barton Lane
Abingdon Science Park
Abingdon, OX14 3NB, United Kingdom
Phone: (44) (0) 1235 529449
Free Phone: 0800 37 34 15
Fax: (44) (0) 1235 533420
info.EMEA@bio-techne.com

General Contact Information

www.novusbio.com
Technical Support: nb-technical@bio-
techne.com
Orders: nb-customerservice@bio-techne.com
General: novus@novusbio.com

Products Related to NBP2-34999

NBP2-34981	Recombinant Protein A/G His (C-Term) Protein
------------	--

Limitations

This product is for research use only and is not approved for use in humans or in clinical diagnosis. Peptides and proteins are guaranteed for 3 months from date of receipt.

For more information on our 100% guarantee, please visit www.novusbio.com/guarantee

Earn gift cards/discounts by submitting a review: www.novusbio.com/reviews/submit/NBP2-34999

Earn gift cards/discounts by submitting a publication using this product:
www.novusbio.com/publications

