

Product Datasheet

Recombinant Protein A/G/L Protein NBP2-34985

Unit Size: 1 mg

Store at -20 to -70C as supplied. After reconstitution, store at 2 to 8C for 1 month and at -20 to -70C for long term storage. Avoid repeated freeze-thaw cycles.

www.novusbio.com



technical@novusbio.com

Publications: 1

Protocols, Publications, Related Products, Reviews, Research Tools and Images at:
www.novusbio.com/NBP2-34985

Updated 1/25/2025 v.20.1

Earn rewards for product
reviews and publications.

Submit a publication at www.novusbio.com/publications

Submit a review at www.novusbio.com/reviews/destination/NBP2-34985



NBP2-34985

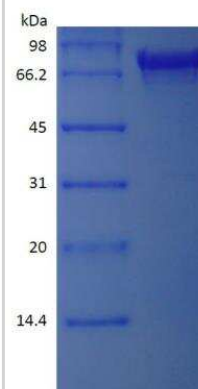
Recombinant Protein A/G/L Protein

Product Information	
Unit Size	1 mg
Concentration	Lyoph
Storage	Store at -20 to -70C as supplied. After reconstitution, store at 2 to 8C for 1 month and at -20 to -70C for long term storage. Avoid repeated freeze-thaw cycles.
Preservative	No Preservative
Reconstitution Instructions	Reconstitute with distilled water or saline.
Purity	>95%, by SDS-PAGE and HPLC
Buffer	Lyophilized from additive free solution.
Target Molecular Weight	89.2 kDa
Product Description	
Description	<p>A single non-glycosylated polypeptide chain containing 805 amino acids corresponding to Protein A/G/L Source: <i>E. coli</i></p> <p>Amino Acid Sequence: NAAQHDEAQQ NAFYQVLNMP NLNADQRNGF IQSLKDDPSQ SANVLGEAQK LNDSPAPKAD AQQNNFNKDQ QSAFYEILNM PNLNEAQRNG FIQSLKDDPS QSTNVLGEAK KLNESQAPKA DNNFNKEQQN AFYEILNMPN LNEEQRNGFI QSLKDDPSQS ANLLSEAKKL NESQAPKADN KFNKEQQNAF YEILHLPNLN EEQRNGFIQS LKDDPSQSAN LLAEAKKLND AQAPKADNKF NKEQQNAFYE ILHLPNLTEE QRNGFIQSLK DDPSVSKEIL AEAKKLNDQA APKEEDSLEG SGSGTYKLIL NGKTLKGETT TEAVDAATAE KVFKQYANDN GVDGEWYDD ATKTFTVTEK PEVIDASELT PAVTTYKLVI NGKTLKGETT TKAVDAETA E KAFKQYANDN GVDGVWYDD ATKTFTVTEE PRARPGSGSG KEETPETPET DSEEEVTIKA NLIFANGSTQ TAEFKGTFEK ATSEAYAYAD TLKKDNGEYT VDVADEGYTL NIKFAGKEKT PEEPKEEVTI KANLIYADGK TQTAEFKGTF EEATAEAYRY ADALKKDNGE YTVDVADKGY TLNIKFAGKE KPEEPKEEV TIKANLIYAD GKTQTAEFKG TFEETAETAY RYADLLAKEN GKYTVDVADK GYTLNIKFAG KEKTPPEPKE EVTIKANLIY ADGKTQTAEF KGTFAEATAE AYRYADLLAK ENGKYTADLE DGGYTINIRF AGKKVDEKPE EKEQVTIKEN IYFEDGTVQT ATFKGTFAEA TAEAYRYADL LSKEHGKYTA DLEDGGYTIN IRFAG</p>
Specificity/Sensitivity	Protein A/G/L binds to human, mouse, rat cow, goat, sheep, rabbit, guinea pig, pig, dog and cat IgG.
Details of Functionality	Protein A/G/L is a genetically engineered protein containing 5 IgG-binding regions of protein A, 2 of protein G and 5 of Protein L. Cell wall binding region, cell membrane binding region and albumin binding region have been removed from the recombinant Protein A/G/L to ensure the maximum specific IgG binding. The recombinant Protein A/G/L is ideal for purification of polyclonal or monoclonal IgG antibodies. Protein A/G/L binds to human, mouse, rat cow, goat, sheep, rabbit, guinea pig, pig, dog and cat IgG.
Endotoxin Note	Less than 0.1 EU/ug of Protein A/G/L as determined by LAL method.
Product Application Details	
Applications	SDS-Page, Bioactivity
Recommended Dilutions	SDS-Page, Bioactivity

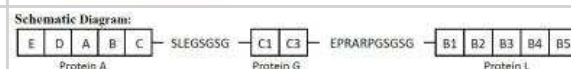


Images

SDS-Page: Protein A/G/L Protein [NBP2-34985]

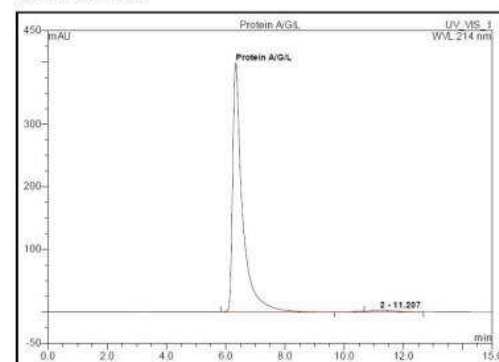


Protein A/G/L Protein [NBP2-34985]



HPLC: Recombinant Protein A/G/L Protein [NBP2-34985] - Protein A/G/L Protein [NBP2-34985]

SEC-HPLC



Publications

Zhou X A novel one-step quick assay for detection of SARS-COV2 antibodies across mammalian species PeerJ 2021 -04-27 [PMID: 33987037]



Novus Biologicals USA

10730 E. Briarwood Avenue
Centennial, CO 80112
USA
Phone: 303.730.1950
Toll Free: 1.888.506.6887
Fax: 303.730.1966
nb-customerservice@bio-techne.com

Bio-Techne Canada

21 Canmotor Ave
Toronto, ON M8Z 4E6
Canada
Phone: 905.827.6400
Toll Free: 855.668.8722
Fax: 905.827.6402
canada.inquires@bio-techne.com

Bio-Techne Ltd

19 Barton Lane
Abingdon Science Park
Abingdon, OX14 3NB, United Kingdom
Phone: (44) (0) 1235 529449
Free Phone: 0800 37 34 15
Fax: (44) (0) 1235 533420
info.EMEA@bio-techne.com

General Contact Information

www.novusbio.com
Technical Support: nb-technical@bio-
techne.com
Orders: nb-customerservice@bio-techne.com
General: novus@novusbio.com

Products Related to NBP2-34985

NBP2-34961	Recombinant Protein A/G/L Cys (N-Term) Protein
------------	--

Limitations

This product is for research use only and is not approved for use in humans or in clinical diagnosis. Peptides and proteins are guaranteed for 3 months from date of receipt.

For more information on our 100% guarantee, please visit www.novusbio.com/guarantee

Earn gift cards/discounts by submitting a review: www.novusbio.com/reviews/submit/NBP2-34985

Earn gift cards/discounts by submitting a publication using this product:
www.novusbio.com/publications

