

# Product Datasheet

## Recombinant Human CDNF Protein NBP2-34938-25ug

Unit Size: 25 ug

Store at -20C. Avoid freeze-thaw cycles.

[www.novusbio.com](http://www.novusbio.com)



[technical@novusbio.com](mailto:technical@novusbio.com)

Protocols, Publications, Related Products, Reviews, Research Tools and Images at:  
[www.novusbio.com/NBP2-34938](http://www.novusbio.com/NBP2-34938)

Updated 1/25/2025 v.20.1

Earn rewards for product  
reviews and publications.

Submit a publication at [www.novusbio.com/publications](http://www.novusbio.com/publications)

Submit a review at [www.novusbio.com/reviews/destination/NBP2-34938](http://www.novusbio.com/reviews/destination/NBP2-34938)



**NBP2-34938-25ug****Recombinant Human CDNF Protein**

<b>Product Information</b>	
<b>Unit Size</b>	25 ug
<b>Concentration</b>	Lyoph
<b>Storage</b>	Store at -20C. Avoid freeze-thaw cycles.
<b>Reconstitution Instructions</b>	Reconstitute with sterilized distilled water or 0.1% BSA aqueous buffer to a final concentration of 0.1 - 1.0 mg/ml.
<b>Purity</b>	>95% pure by SDS-PAGE
<b>Buffer</b>	Lyophilized from a 0.2 um filtered concentrated solution in 10 mM PB, 150 mM NaCl, pH 6.4.
<b>Target Molecular Weight</b>	18.3 kDa

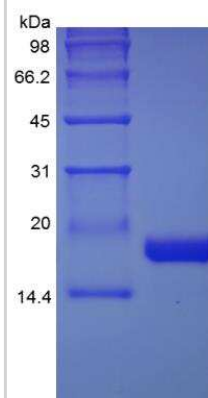
<b>Product Description</b>	
<b>Description</b>	<p>A single, non-glycosylated biologically active polypeptide chain corresponding to 161 residues of CDNF.</p> <p><b>Source:</b> <i>E. coli</i></p> <p><b>Amino Acid Sequence:</b> QEAGGRPGAD CEVCKEFLNR FYKSLIDRGV NFSLDTIEKE LISFCLDTKG KENRLCYLG ATKDAATKIL SEVTRPMSVH MPAMKICEKL KKLDSQICEL KYEKTLDLAS VDLRKMRAE LKQILHSWGE ECRACAEKTD YVNLIQELAP KYAATHPKTE L</p>
<b>Gene ID</b>	441549
<b>Gene Symbol</b>	CDNF
<b>Species</b>	Human
<b>Details of Functionality</b>	CDNF protein is fully biologically active when compared to standard. The ED50 as determined by a cell proliferation assay using rat C6 cells is less than 25 ug/ml, corresponding to a specific activity of > 40 IU/mg.
<b>Endotoxin Note</b>	Less than 1 EU/ug of endotoxin as determined by LAL method.

<b>Product Application Details</b>	
<b>Applications</b>	SDS-Page, Bioactivity
<b>Recommended Dilutions</b>	SDS-Page, Bioactivity



## Images

SDS-Page: Human CDNF Protein [NBP2-34938]





### **Novus Biologicals USA**

10730 E. Briarwood Avenue  
Centennial, CO 80112  
USA  
Phone: 303.730.1950  
Toll Free: 1.888.506.6887  
Fax: 303.730.1966  
nb-customerservice@bio-techne.com

### **Bio-Techne Canada**

21 Canmotor Ave  
Toronto, ON M8Z 4E6  
Canada  
Phone: 905.827.6400  
Toll Free: 855.668.8722  
Fax: 905.827.6402  
canada.inquires@bio-techne.com

### **Bio-Techne Ltd**

19 Barton Lane  
Abingdon Science Park  
Abingdon, OX14 3NB, United Kingdom  
Phone: (44) (0) 1235 529449  
Free Phone: 0800 37 34 15  
Fax: (44) (0) 1235 533420  
info.EMEA@bio-techne.com

### **General Contact Information**

[www.novusbio.com](http://www.novusbio.com)  
Technical Support: nb-technical@bio-techne.com  
Orders: nb-customerservice@bio-techne.com  
General: novus@novusbio.com

### **Limitations**

This product is for research use only and is not approved for use in humans or in clinical diagnosis. Peptides and proteins are guaranteed for 3 months from date of receipt.

For more information on our 100% guarantee, please visit [www.novusbio.com/guarantee](http://www.novusbio.com/guarantee)

Earn gift cards/discounts by submitting a review: [www.novusbio.com/reviews/submit/NBP2-34938](http://www.novusbio.com/reviews/submit/NBP2-34938)

Earn gift cards/discounts by submitting a publication using this product:  
[www.novusbio.com/publications](http://www.novusbio.com/publications)

