

Product Datasheet

CD68/SR-D1 Antibody (KP1 + C68/684) [PE] NBP2-34662PE

Unit Size: 0.1 ml

Store at 4C in the dark.

www.novusbio.com



technical@novusbio.com

Protocols, Publications, Related Products, Reviews, Research Tools and Images at:
www.novusbio.com/NBP2-34662PE

Updated 10/23/2024 v.20.1

Earn rewards for product
reviews and publications.

Submit a publication at www.novusbio.com/publications

Submit a review at www.novusbio.com/reviews/destination/NBP2-34662PE



NBP2-34662PE

CD68/SR-D1 Antibody (KP1 + C68/684) [PE]

Product Information	
Unit Size	0.1 ml
Concentration	Please see the vial label for concentration. If unlisted please contact technical services.
Storage	Store at 4C in the dark.
Clonality	Monoclonal
Clone	KP1 + C68/684
Preservative	0.05% Sodium Azide
Isotype	IgG1 Kappa/IgG1 Kappa
Conjugate	PE
Purity	Protein A or G purified
Buffer	PBS

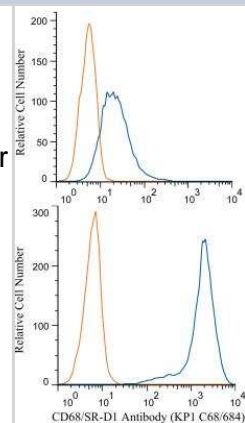
Product Description	
Description	This conjugate is made on demand. Actual recovery may vary from the stated volume of this product. The volume will be greater than or equal to the unit size stated on the datasheet.
Host	Mouse
Gene ID	968
Gene Symbol	CD68
Species	Human, Mouse, Rat, Feline, Monkey
Marker	Macrophage Marker
Specificity/Sensitivity	This antibody recognizes a glycoprotein of 110kDa, which is identified as CD68. It is important for identifying macrophages in tissue sections. It stains macrophages in a wide variety of human tissues, including Kupffer cells and macrophages in the red pulp of the spleen, in lamina propria of the gut, in lung alveoli, and in bone marrow. It reacts with myeloid precursors and peripheral blood granulocytes. It also reacts with plasmacytoid T cells, which are supposed to be of monocyte/macrophage origin. It shows strong granular cytoplasmic staining of chronic and acute myeloid leukemia and also reacts with rare cases of true histiocytic neoplasia. Lymphomas are negative or show few granules.
Immunogen	Subcellular fraction of human alveolar macrophages (KP1); Recombinant human CD68/SR-D1 protein (C68/684)

Product Application Details	
Applications	Flow Cytometry, Flow (Intracellular), Immunohistochemistry, Immunohistochemistry-Paraffin, CyTOF-ready
Recommended Dilutions	Flow Cytometry, Immunohistochemistry, Immunohistochemistry-Paraffin, Flow (Intracellular), CyTOF-ready



Images

Flow Cytometry: CD68/SR-D1 Antibody (KP1 + C68/684) [PE] [NBP2-34662PE] - A cell surface (top) and intracellular stain (bottom) was performed on U87 MG cells with CD68 antibody NBP2-34662PE along with a matched isotype control NBP2-27287PE. The cell surface stain was performed in an antibody dilution of 1 ug/mL and incubated at RT for 20 minutes. Prior to intracellular staining, the cells were fixed with 4% PFA and then permeabilized with 0.1 % saponin. The cells were then incubated in an antibody dilution of 1 ug/mL at RT for 30 minutes.



**Novus Biologicals USA**

10730 E. Briarwood Avenue
Centennial, CO 80112
USA
Phone: 303.730.1950
Toll Free: 1.888.506.6887
Fax: 303.730.1966
nb-customerservice@bio-techne.com

Bio-Techne Canada

21 Canmotor Ave
Toronto, ON M8Z 4E6
Canada
Phone: 905.827.6400
Toll Free: 855.668.8722
Fax: 905.827.6402
canada.inquires@bio-techne.com

Bio-Techne Ltd

19 Barton Lane
Abingdon Science Park
Abingdon, OX14 3NB, United Kingdom
Phone: (44) (0) 1235 529449
Free Phone: 0800 37 34 15
Fax: (44) (0) 1235 533420
info.EMEA@bio-techne.com

General Contact Information

www.novusbio.com
Technical Support: nb-technical@bio-techne.com
Orders: nb-customerservice@bio-techne.com
General: novus@novusbio.com

Products Related to NBP2-34662PE

NBP2-22756	Recombinant Human CD68/SR-D1 His Protein
210-TA-005	TNF-alpha [Unconjugated]
10301-SR-050	CD68/SR-D1 [Unconjugated]
M6000B-1	IL-6 [HRP]

Limitations

This product is for research use only and is not approved for use in humans or in clinical diagnosis. Primary Antibodies are guaranteed for 1 year from date of receipt.

For more information on our 100% guarantee, please visit www.novusbio.com/guarantee

Earn gift cards/discounts by submitting a review: www.novusbio.com/reviews/submit/NBP2-34662PE

Earn gift cards/discounts by submitting a publication using this product:
www.novusbio.com/publications

