

Product Datasheet

CD68/SR-D1 Antibody (KP1) - Azide and BSA Free NBP2-34661-0.1 mg

Unit Size: 0.1 mg

Store at 4C short term. Aliquot and store at -20C long term. Avoid freeze-thaw cycles.

www.novusbio.com



technical@novusbio.com

Protocols, Publications, Related Products, Reviews, Research Tools and Images at:
www.novusbio.com/NBP2-34661

Updated 2/18/2021 v.20.1

Earn rewards for product
reviews and publications.

Submit a publication at www.novusbio.com/publications

Submit a review at www.novusbio.com/reviews/destination/NBP2-34661



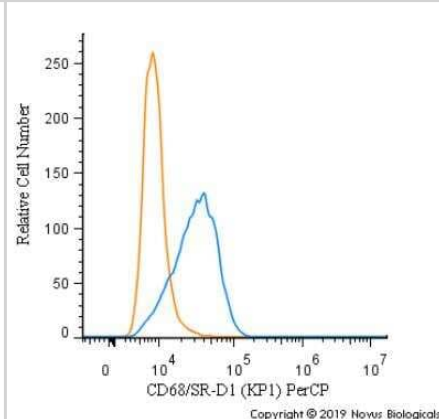
NBP2-34661-0.1 mg

CD68/SR-D1 Antibody (KP1) - Azide and BSA Free

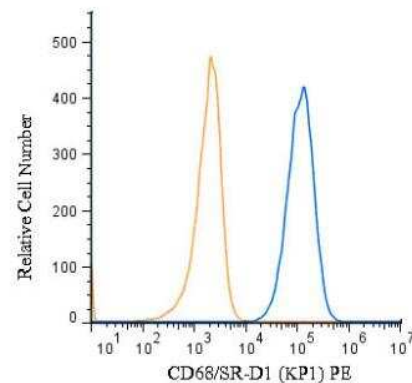
Product Information	
Unit Size	0.1 mg
Concentration	1.0 mg/ml
Storage	Store at 4C short term. Aliquot and store at -20C long term. Avoid freeze-thaw cycles.
Clonality	Monoclonal
Clone	KP1
Preservative	No Preservative
Isotype	IgG1 Kappa
Purity	Protein A or G purified
Buffer	10 mM PBS
Target Molecular Weight	110 kDa
Product Description	
Host	Mouse
Gene ID	968
Gene Symbol	CD68
Species	Human, Feline, Monkey, Canine (Negative), Chicken (Negative), Porcine (Negative)
Marker	Macrophage Marker
Specificity/Sensitivity	This antibody recognizes a glycoprotein of 110kDa, which is identified as CD68. It is important for identifying macrophages in tissue sections. It stains macrophages in a wide variety of human tissues, including Kupffer cells and macrophages in the red pulp of the spleen, in lamina propria of the gut, in lung alveoli, and in bone marrow. It reacts with myeloid precursors and peripheral blood granulocytes. It also reacts with plasmacytoid T cells, which are supposed to be of monocyte/macrophage origin. It shows strong granular cytoplasmic staining of chronic and acute myeloid leukemia and also reacts with rare cases of true histiocytic neoplasia. Lymphomas are negative or show few granules.
Immunogen	Subcellular fraction of human alveolar macrophages
Product Application Details	
Applications	Western Blot, Flow Cytometry, Flow (Intracellular), Immunocytochemistry/Immunofluorescence, Immunohistochemistry, Immunohistochemistry-Frozen, Immunohistochemistry-Paraffin, Immunoprecipitation, CyTOF-ready
Recommended Dilutions	Western Blot 0.5-1ug/ml, Flow Cytometry 0.5-1ug/million cells, Immunohistochemistry, Immunocytochemistry/Immunofluorescence 0.5-1ug/ml, Immunoprecipitation 0.5-1ug/500ug protein lysate, Immunohistochemistry-Paraffin 0.5-1ug/ml, Immunohistochemistry-Frozen 0.5-1ug/ml, Flow (Intracellular), CyTOF-ready
Application Notes	Immunohistochemistry (Staining of formalin-fixed tissues requires boiling tissue sections in 10mM citrate buffer, pH 6.0, for 10-20 min followed by cooling at RT for 20 minutes)

Images

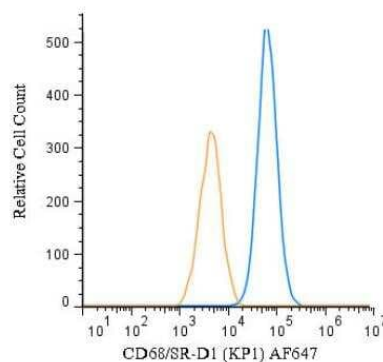
Flow Cytometry: CD68/SR-D1 Antibody (KP1) - Azide and BSA Free [NBP2-34661] - An intracellular stain was performed on SK-MEL-28 cells with CD68/SR-D1 Antibody [KP1] NBP2-34661PCP (blue) and a matched isotype control (orange). Cells were fixed with 4% PFA and then permeabilized with 0.1% saponin. Cells were incubated in an antibody dilution of 10 ug/mL for 30 minutes at room temperature. Both antibodies were conjugated to PerCP.



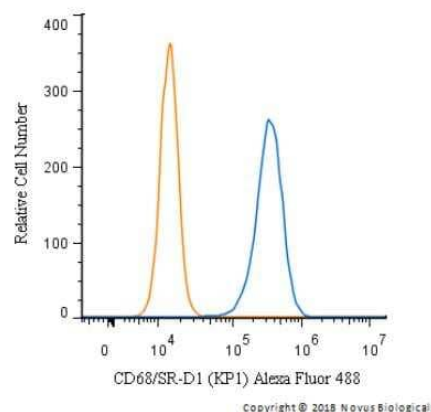
Flow (Intracellular): CD68/SR-D1 Antibody (KP1) - Azide and BSA Free [NBP2-34661] - An intracellular stain was performed on U-937 cells with CD68/SR-D1 Antibody (KP1) NBP2-34661PE (blue) and a matched isotype control (orange). Cells were fixed with 4% PFA and then permeabilized with 0.1% saponin. Cells were incubated in an antibody dilution of 2.5 ug/mL for 30 minutes at room temperature. Both antibodies were conjugated to phycoerythrin.



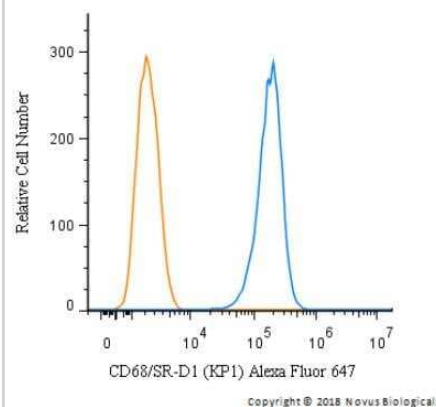
Flow (Intracellular): CD68/SR-D1 Antibody (KP1) - Azide and BSA Free [NBP2-34661] - An intracellular stain was performed on U-937 cells with CD68/SR-D1 Antibody (KP1) NBP2-34661AF647 (blue) and a matched isotype control (orange). Cells were fixed with 4% PFA and then permeabilized with 0.1% saponin. Cells were incubated in an antibody dilution of 2.5 ug/mL for 30 minutes at room temperature. Both antibodies were conjugated to Alexa Fluor AF647.



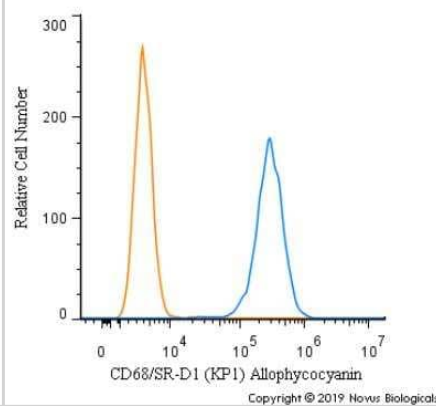
Flow Cytometry: CD68/SR-D1 Antibody (KP1) - Azide and BSA Free [NBP2-34661] - An intracellular stain was performed on SK-MEL-28 cells with CD68/SR-D1 Antibody (KP1) NBP2-34661AF488 (blue) and a matched isotype control (orange). Cells were fixed with 4% PFA and then permeabilized with 0.1% saponin. Cells were incubated in an antibody dilution of 5 ug/mL for 30 minutes at room temperature. Both antibodies were conjugated to Alexa Fluor AF488.



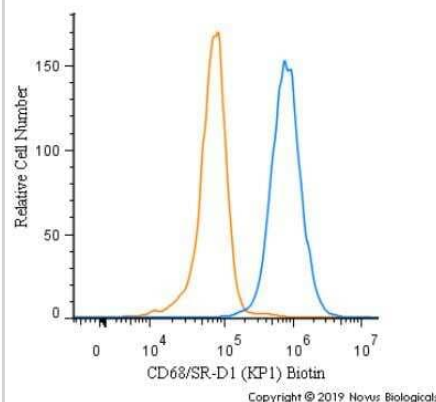
Flow Cytometry: CD68/SR-D1 Antibody (KP1) - Azide and BSA Free [NBP2-34661] - An intracellular stain was performed on SK-MEL-28 cells with CD68/SR-D1 Antibody (KP1) NBP2-34661AF647 (blue) and a matched isotype control (orange). Cells were fixed with 4% PFA and then permeabilized with 0.1% saponin. Cells were incubated in an antibody dilution of 2.5 ug/mL for 30 minutes at room temperature. Both antibodies were conjugated to Alexa Fluor AF647.



Flow Cytometry: CD68/SR-D1 Antibody (KP1) - Azide and BSA Free [NBP2-34661] - An intracellular stain was performed on SK-MEL-28 cells with CD68/SR-D1 [KP1] Antibody NBP2-34661APC (blue) and a matched isotype control (orange). Cells were fixed with 4% PFA and then permeabilized with 0.1% saponin. Cells were incubated in an antibody dilution of 1 ug/mL for 30 minutes at room temperature. Both antibodies were conjugated to Allophycocyanin.



Flow Cytometry: CD68/SR-D1 Antibody (KP1) - Azide and BSA Free [NBP2-34661] - An intracellular stain was performed on SK-MEL-28 cells with CD68/SR-D1 Antibody [KP1] NBP2-34661B (blue) and a matched isotype control (orange). Both antibodies were conjugated to Biotin. Cells were fixed with 4% PFA and then permeabilized with 0.1% saponin. Cells were incubated in an antibody dilution of 2.5 ug/mL for 30 minutes at room temperature, followed by Streptavidin - R-Phycoerythrin Protein (2012-1000, Novus Biologicals).





Novus Biologicals USA

10730 E. Briarwood Avenue
Centennial, CO 80112
USA
Phone: 303.730.1950
Toll Free: 1.888.506.6887
Fax: 303.730.1966
nb-customerservice@bio-techne.com

Bio-Techne Canada

21 Canmotor Ave
Toronto, ON M8Z 4E6
Canada
Phone: 905.827.6400
Toll Free: 855.668.8722
Fax: 905.827.6402
canada.inquires@bio-techne.com

Bio-Techne Ltd

19 Barton Lane
Abingdon Science Park
Abingdon, OX14 3NB, United Kingdom
Phone: (44) (0) 1235 529449
Free Phone: 0800 37 34 15
Fax: (44) (0) 1235 533420
info.EMEA@bio-techne.com

General Contact Information

www.novusbio.com
Technical Support: nb-technical@bio-
techne.com
Orders: nb-customerservice@bio-techne.com
General: novus@novusbio.com

Limitations

This product is for research use only and is not approved for use in humans or in clinical diagnosis. Primary Antibodies are guaranteed for 1 year from date of receipt.

For more information on our 100% guarantee, please visit www.novusbio.com/guarantee

Earn gift cards/discounts by submitting a review: www.novusbio.com/reviews/submit/NBP2-34661

Earn gift cards/discounts by submitting a publication using this product:
www.novusbio.com/publications

