

Product Datasheet

Cytokeratin 19 Antibody (BA17) - Azide and BSA Free NBP2-34560-0.1 mg

Unit Size: 0.1 mg

Store at 4C short term. Aliquot and store at -20C long term. Avoid freeze-thaw cycles.

www.novusbio.com



technical@novusbio.com

Protocols, Publications, Related Products, Reviews, Research Tools and Images at:
www.novusbio.com/NBP2-34560

Updated 1/14/2021 v.20.1

Earn rewards for product
reviews and publications.

Submit a publication at www.novusbio.com/publications

Submit a review at www.novusbio.com/reviews/destination/NBP2-34560



NBP2-34560-0.1 mg

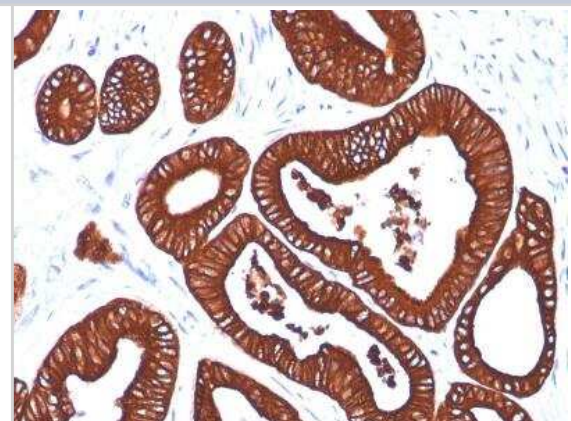
Cytokeratin 19 Antibody (BA17) - Azide and BSA Free

Product Information	
Unit Size	0.1 mg
Concentration	1.0 mg/ml
Storage	Store at 4C short term. Aliquot and store at -20C long term. Avoid freeze-thaw cycles.
Clonality	Monoclonal
Clone	BA17
Preservative	No Preservative
Isotype	IgG1 Kappa
Purity	Protein A purified
Buffer	PBS
Target Molecular Weight	40 kDa
Product Description	
Host	Mouse
Gene ID	3880
Gene Symbol	KRT19
Species	Human
Marker	Pancreatic Stem Cell Marker
Specificity/Sensitivity	This Ab reacts with the rod domain of human cytokeratin 19 (CK19), a polypeptide of 40kDa. CK19 is expressed in sweat gland, mammary gland ductal and secretory cells, bile ducts, gastrointestinal tract, bladder urothelium, oral epithelia, esophagus, and ectocervical epithelium. Anti-CK19 reacts with a wide variety of epithelial malignancies including adenocarcinomas of the colon, stomach, pancreas, biliary tract, liver, and breast. Perhaps the most useful application is the identification of thyroid carcinoma of the papillary type, although 50%-60% of follicular carcinomas are also labeled. Anti-CK19 is a useful marker for detection of tumor cells in lymph nodes, peripheral blood, bone marrow and breast cancer.
Immunogen	Human mammary epithelial organoids
Product Application Details	
Applications	Western Blot, ELISA, Flow Cytometry, Immunocytochemistry/Immunofluorescence, Immunohistochemistry, Immunohistochemistry-Frozen, Immunohistochemistry-Paraffin, Immunoprecipitation, CyTOF-ready
Recommended Dilutions	Western Blot 0.5-1ug/ml, Flow Cytometry 0.5-1ug/million cells, ELISA 1-5ug/ml for coating, Immunohistochemistry, Immunocytochemistry/Immunofluorescence 1-2ug/ml, Immunoprecipitation 1-2ug/500ug protein, Immunohistochemistry-Paraffin 0.5-1ug/ml, Immunohistochemistry-Frozen 0.5-1ug/ml, CyTOF-ready
Application Notes	Immunohistochemistry (Staining of formalin-fixed tissues requires boiling tissue sections in 10mM citrate buffer, pH 6.0, for 10-20 min followed by cooling at RT for 20 minutes)

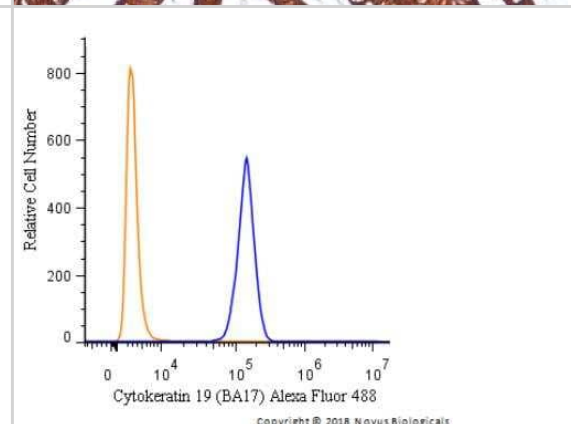


Images

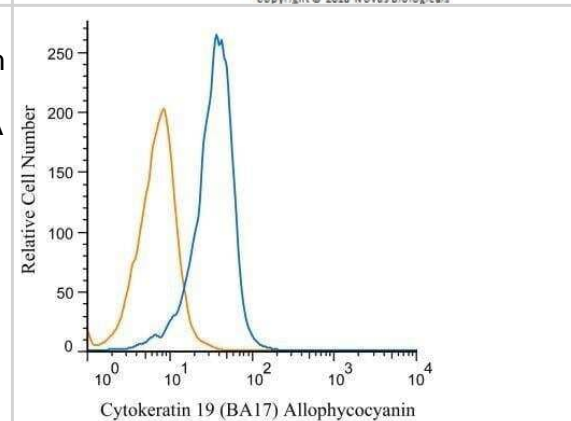
Immunohistochemistry-Paraffin: Cytokeratin 19 Antibody (BA17) - Azide and BSA Free [NBP2-34560] - Formalin-fixed, paraffin-embedded human colon stained with Cytokeratin 19 MAb (BA17)image 1 of 5previousnextclose



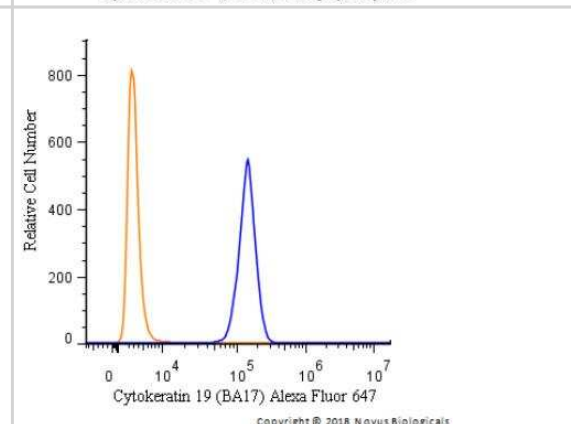
Flow Cytometry: Cytokeratin 19 Antibody (BA17) - Azide and BSA Free [NBP2-34560] - An intracellular stain was performed on HeLa cells with Cytokeratin 19 [BA17] Antibody NBP2-34560AF488 (blue) and a matched isotype control (orange). Cells were fixed with 4% PFA and then permeabilized with 0.1% saponin. Cells were incubated in an antibody dilution of 5 ug/mL for 30 minutes at room temperature. Both antibodies were conjugated to Alexa Fluor 488.



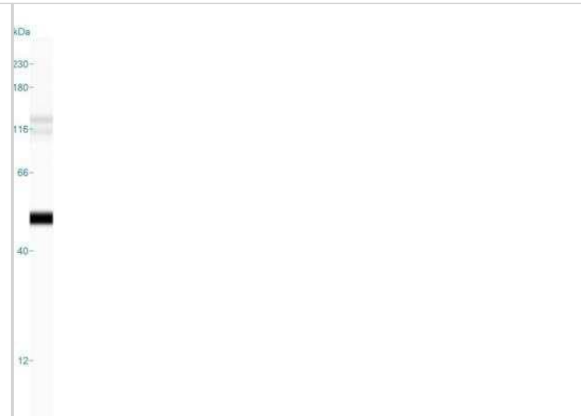
Flow Cytometry: Cytokeratin 19 Antibody (BA17) - Azide and BSA Free [NBP2-34560] - An intracellular stain was performed on HepG2 cells with Cytokeratin 19 antibody (BA17) NBP2-34560APC (blue) and a matched isotype control NBP2-27287APC (orange). Cells were fixed with 4% PFA and then permeabilized with 0.1% saponin. Cells were incubated in an antibody dilution of 1 ug/mL for 30 minutes at room temperature. Both antibodies were conjugated to Allophycocyanin.



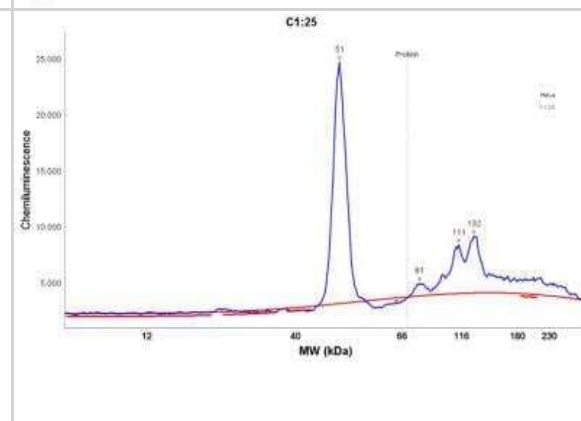
Flow Cytometry: Cytokeratin 19 Antibody (BA17) - Azide and BSA Free [NBP2-34560] - An intracellular stain was performed on HeLa cells with Cytokeratin 19 [BA17] Antibody NBP2-34560AF647 (blue) and a matched isotype control (orange). Cells were fixed with 4% PFA and then permeabilized with 0.1% saponin. Cells were incubated in an antibody dilution of 2.5 ug/mL for 30 minutes at room temperature. Both antibodies were conjugated to Alexa Fluor 647.



Simple Western: Cytokeratin 19 Antibody (BA17) - Azide and BSA Free [NBP2-34560] - Lane view shows a specific band for Cytokeratin 19 in 0.2 mg/ml of HeLa lysate(s). This experiment was performed under reducing conditions using the 12-230 kDa separation system.



Simple Western: Cytokeratin 19 Antibody (BA17) - Azide and BSA Free [NBP2-34560] - Electropherogram image of the corresponding Simple Western lane. Cytokeratin 19 antibody was used at 10 ug/ml dilution of HeLa lysates(s) respectively.





Novus Biologicals USA

10730 E. Briarwood Avenue
Centennial, CO 80112
USA
Phone: 303.730.1950
Toll Free: 1.888.506.6887
Fax: 303.730.1966
novus@novusbio.com

Bio-Techne Canada

21 Canmotor Ave
Toronto, ON M8Z 4E6
Canada
Phone: 905.827.6400
Toll Free: 855.668.8722
Fax: 905.827.6402
canada.inquires@bio-techne.com

Bio-Techne Ltd

19 Barton Lane
Abingdon Science Park
Abingdon, OX14 3NB, United Kingdom
Phone: (44) (0) 1235 529449
Free Phone: 0800 37 34 15
Fax: (44) (0) 1235 533420
info.EMEA@bio-techne.com

General Contact Information

www.novusbio.com
Technical Support: technical@novusbio.com
Orders: orders@novusbio.com
General: novus@novusbio.com

Limitations

This product is for research use only and is not approved for use in humans or in clinical diagnosis. Primary Antibodies are guaranteed for 1 year from date of receipt.

For more information on our 100% guarantee, please visit www.novusbio.com/guarantee

Earn gift cards/discounts by submitting a review: www.novusbio.com/reviews/submit/NBP2-34560

Earn gift cards/discounts by submitting a publication using this product:
www.novusbio.com/publications

