

# Product Datasheet

## Lambda Light Chain Antibody (ICO-106) - Azide and BSA Free NBP2-33311

Unit Size: 0.1 mg

Store at 4C short term. Aliquot and store at -20C long term. Avoid freeze-thaw cycles.

[www.novusbio.com](http://www.novusbio.com)



[technical@novusbio.com](mailto:technical@novusbio.com)

Protocols, Publications, Related Products, Reviews, Research Tools and Images at:  
[www.novusbio.com/NBP2-33311](http://www.novusbio.com/NBP2-33311)

Updated 4/29/2021 v.20.1

Earn rewards for product reviews and publications.

Submit a publication at [www.novusbio.com/publications](http://www.novusbio.com/publications)

Submit a review at [www.novusbio.com/reviews/destination/NBP2-33311](http://www.novusbio.com/reviews/destination/NBP2-33311)



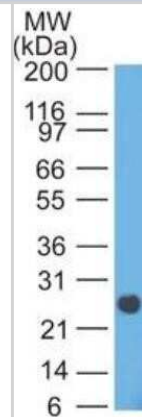
**NBP2-33311**

Lambda Light Chain Antibody (ICO-106) - Azide and BSA Free

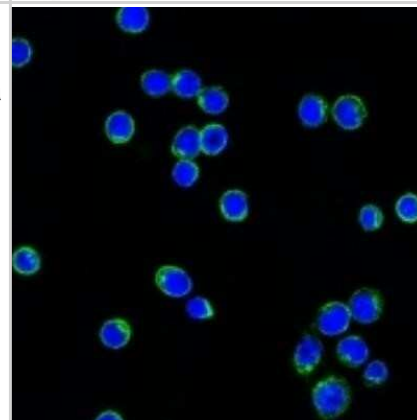
<b>Product Information</b>	
<b>Unit Size</b>	0.1 mg
<b>Concentration</b>	1.0 mg/ml
<b>Storage</b>	Store at 4C short term. Aliquot and store at -20C long term. Avoid freeze-thaw cycles.
<b>Clonality</b>	Monoclonal
<b>Clone</b>	ICO-106
<b>Preservative</b>	No Preservative
<b>Isotype</b>	IgG2a Kappa
<b>Purity</b>	Protein A purified
<b>Buffer</b>	10 mM PBS
<b>Target Molecular Weight</b>	22.5 kDa
<b>Product Description</b>	
<b>Host</b>	Mouse
<b>Gene ID</b>	3537
<b>Gene Symbol</b>	IGLC1
<b>Species</b>	Human
<b>Marker</b>	B-Cell Marker
<b>Specificity/Sensitivity</b>	This MAbs is specific to lambda light chain of immunoglobulin and shows no cross-reaction with lambda light chain or any of the five heavy chains. In mammals, the two light chains in an antibody are always identical, with only one type of light chain, kappa or lambda. The ratio of Kappa to Lambda is 70:30. However, with the occurrence of multiple myeloma or other B-cell malignancies this ratio is disturbed. Antibody to the lambda light chain is reportedly useful in the identification of leukemias, plasmacytomas, and certain non-Hodgkin's lymphomas. Demonstration of clonality in lymphoid infiltrates indicates that the infiltrate is malignant.
<b>Immunogen</b>	Purified human IgG myeloma proteins covalently coupled to polyaminostyren microbeads were used as the immunogen for the HP6054 antibody.
<b>Product Application Details</b>	
<b>Applications</b>	Western Blot, ELISA, Flow Cytometry, Immunocytochemistry/ Immunofluorescence, Immunohistochemistry, Immunohistochemistry-Frozen, Immunohistochemistry-Paraffin, Immunoprecipitation, CyTOF-ready
<b>Recommended Dilutions</b>	Western Blot 0.5-1.0ug/ml, Flow Cytometry 0.5-1ug/million cells, ELISA 1-5ug/ml for coating, Immunohistochemistry, Immunocytochemistry/ Immunofluorescence 0.5-1ug/ml, Immunoprecipitation 0.5-1ug/500ug protein lysate, Immunohistochemistry-Paraffin 0.5-1ug/ml, Immunohistochemistry-Frozen 0.5-1ug/ml, CyTOF-ready
<b>Application Notes</b>	Immunohistochemistry-Frozen application reported in literature. Formalin fixed paraffin embedded tissue sections require high temperature antigen unmasking with 10 mM citrate buffer, pH 6.0 prior to immunostaining.

## Images

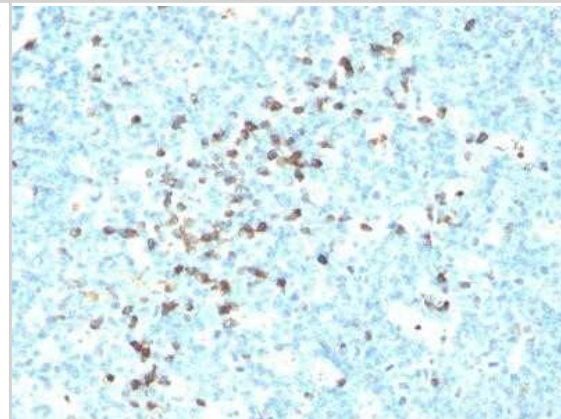
Western Blot: Lambda Light Chain Antibody (ICO-106) - Azide and BSA Free [NBP2-33311] - Analysis of Lambda in human intestine using Lambda HP6054 antibody at 2 ug/ml, HRP secondary and ECL substrate.



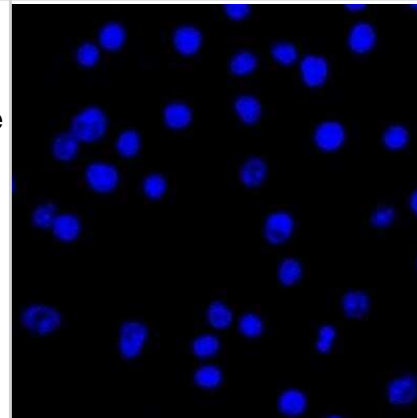
Immunocytochemistry/Immunofluorescence: Lambda Light Chain Antibody (ICO-106) - Azide and BSA Free [NBP2-33311] - Confocal immunofluorescent analysis of Ramos cells using Af488-labeled Lambda Light Chain Monoclonal Antibody (LcN-2) (Green). DAPI was used to stain the cell nuclei (blue).



Immunohistochemistry-Paraffin: Lambda Light Chain Antibody (ICO-106) - Azide and BSA Free [NBP2-33311] - Formalin-paraffin human tonsil stained with Lambda Light Chain Ab (LcN-2). Note cell membrane & cytoplasmic staining.



Immunocytochemistry/Immunofluorescence: Lambda Light Chain Antibody (ICO-106) - Azide and BSA Free [NBP2-33311] - Confocal Immunofluorescent analysis of Ramos cells using AF488-labeled isotype control Monoclonal Antibody (IgG2a) (Green) DAPI was used to stain the cell nuclei ( blue)/ (Negative control)





### **Novus Biologicals USA**

10730 E. Briarwood Avenue  
Centennial, CO 80112  
USA  
Phone: 303.730.1950  
Toll Free: 1.888.506.6887  
Fax: 303.730.1966  
nb-customerservice@bio-techne.com

### **Bio-Techne Canada**

21 Canmotor Ave  
Toronto, ON M8Z 4E6  
Canada  
Phone: 905.827.6400  
Toll Free: 855.668.8722  
Fax: 905.827.6402  
canada.inquires@bio-techne.com

### **Bio-Techne Ltd**

19 Barton Lane  
Abingdon Science Park  
Abingdon, OX14 3NB, United Kingdom  
Phone: (44) (0) 1235 529449  
Free Phone: 0800 37 34 15  
Fax: (44) (0) 1235 533420  
info.EMEA@bio-techne.com

### **General Contact Information**

www.novusbio.com  
Technical Support: nb-technical@bio-techne.com  
Orders: nb-customerservice@bio-techne.com  
General: novus@novusbio.com

### **Limitations**

This product is for research use only and is not approved for use in humans or in clinical diagnosis. Primary Antibodies are guaranteed for 1 year from date of receipt.

For more information on our 100% guarantee, please visit [www.novusbio.com/guarantee](http://www.novusbio.com/guarantee)

Earn gift cards/discounts by submitting a review: [www.novusbio.com/reviews/submit/NBP2-33311](http://www.novusbio.com/reviews/submit/NBP2-33311)

Earn gift cards/discounts by submitting a publication using this product:  
[www.novusbio.com/publications](http://www.novusbio.com/publications)

