

Product Datasheet

MUC1 Antibody (GP1.4) [PE] NBP2-33174PE

Unit Size: 0.1 ml

Store at 4C in the dark.

www.novusbio.com



technical@novusbio.com

Protocols, Publications, Related Products, Reviews, Research Tools and Images at:
www.novusbio.com/NBP2-33174PE

Updated 10/23/2024 v.20.1

Earn rewards for product
reviews and publications.

Submit a publication at www.novusbio.com/publications

Submit a review at www.novusbio.com/reviews/destination/NBP2-33174PE



NBP2-33174PE

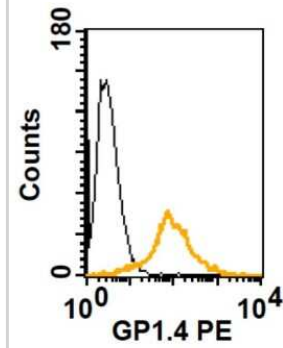
MUC1 Antibody (GP1.4) [PE]

Product Information	
Unit Size	0.1 ml
Concentration	Please see the vial label for concentration. If unlisted please contact technical services.
Storage	Store at 4C in the dark.
Clonality	Monoclonal
Clone	GP1.4
Preservative	0.05% Sodium Azide
Isotype	IgG1 Kappa
Conjugate	PE
Purity	Protein A or G purified
Buffer	PBS
Product Description	
Description	This conjugate is made on demand. Actual recovery may vary from the stated volume of this product. The volume will be greater than or equal to the unit size stated on the datasheet.
Host	Mouse
Gene ID	4582
Gene Symbol	MUC1
Species	Human
Reactivity Notes	Others not known.
Marker	Epithelial Marker
Specificity/Sensitivity	In Western blotting, it recognizes proteins in MW range of 265-400kDa, identified as different glycoforms of EMA. This monoclonal antibody reacts with the DTRP epitope in the tandem repeats. The alpha subunit has cell adhesive properties. It can act both as an adhesion and an anti-adhesion protein. EMA may provide a protective layer on epithelial cells against bacterial and enzyme attack. The beta subunit contains a C-terminal domain, which is involved in cell signaling, through phosphorylations and protein-protein interactions. In immunohistochemical assays, it superbly stains routine formalin/paraffin carcinoma tissues. Antibody to EMA is useful as a pan-epithelial marker for detecting early metastatic loci of carcinoma in bone marrow or liver.
Immunogen	Human milk fat globule membranes (Uniprot: P15941)
Product Application Details	
Applications	Western Blot, Flow Cytometry, Immunocytochemistry/ Immunofluorescence, Immunohistochemistry, Immunohistochemistry-Paraffin
Recommended Dilutions	Western Blot, Flow Cytometry, Immunohistochemistry, Immunocytochemistry/ Immunofluorescence, Immunohistochemistry-Paraffin



Images

Flow Cytometry: MUC-1 Antibody (GP1.4) [PE] [NBP2-33174PE] - Overlay histogram showing NHBE cells stained with anti-MUC1 antibody [PE] (yellow line).



Flow cytometry: Overlay histogram showing NHBE cells stained with MUC1 GP1.4 [PE] (yellow line).



Novus Biologicals USA

10730 E. Briarwood Avenue
Centennial, CO 80112
USA
Phone: 303.730.1950
Toll Free: 1.888.506.6887
Fax: 303.730.1966
nb-customerservice@bio-techne.com

Bio-Techne Canada

21 Canmotor Ave
Toronto, ON M8Z 4E6
Canada
Phone: 905.827.6400
Toll Free: 855.668.8722
Fax: 905.827.6402
canada.inquires@bio-techne.com

Bio-Techne Ltd

19 Barton Lane
Abingdon Science Park
Abingdon, OX14 3NB, United Kingdom
Phone: (44) (0) 1235 529449
Free Phone: 0800 37 34 15
Fax: (44) (0) 1235 533420
info.EMEA@bio-techne.com

General Contact Information

www.novusbio.com
Technical Support: nb-technical@bio-techne.com
Orders: nb-customerservice@bio-techne.com
General: novus@novusbio.com

Products Related to NBP2-33174PE

NBP1-43319PE-0.5ml	Mouse IgG1 Kappa Isotype Control (P3.6.2.8.1) [PE]
H00004582-Q01-10ug	Recombinant Human MUC1 GST (N-Term) Protein
1129-ER-050	ErbB2/Her2 [Unconjugated]
10332-MU-050	MUC1 [Unconjugated]

Limitations

This product is for research use only and is not approved for use in humans or in clinical diagnosis. Primary Antibodies are guaranteed for 1 year from date of receipt.

For more information on our 100% guarantee, please visit www.novusbio.com/guarantee

Earn gift cards/discounts by submitting a review: www.novusbio.com/reviews/submit/NBP2-33174PE

Earn gift cards/discounts by submitting a publication using this product:
www.novusbio.com/publications

