

Product Datasheet

CYP27A1 Antibody - BSA Free

NBP2-32433

Unit Size: 0.1 ml

Store at 4C short term. Aliquot and store at -20C long term. Avoid freeze-thaw cycles.

www.novusbio.com



technical@novusbio.com

Protocols, Publications, Related Products, Reviews, Research Tools and Images at:
www.novusbio.com/NBP2-32433

Updated 2/23/2025 v.20.1

Earn rewards for product
reviews and publications.

Submit a publication at www.novusbio.com/publications

Submit a review at www.novusbio.com/reviews/destination/NBP2-32433



NBP2-32433

CYP27A1 Antibody - BSA Free

Product Information

Unit Size	0.1 ml
Concentration	Concentrations vary lot to lot. See vial label for concentration. If unlisted please contact technical services.
Storage	Store at 4C short term. Aliquot and store at -20C long term. Avoid freeze-thaw cycles.
Clonality	Polyclonal
Preservative	0.02% Sodium Azide
Isotype	IgG
Purity	Immunogen affinity purified
Buffer	PBS (pH 7.2), 40% Glycerol

Product Description

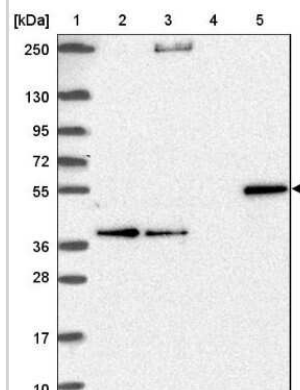
Host	Rabbit
Gene ID	1593
Gene Symbol	CYP27A1
Species	Human
Immunogen	This CYP27A1 Antibody was developed against a recombinant protein corresponding to amino acids: RQRSLEEIPRLGQLRFFFQLFVQGYALQLHQLQVLYKAKYGPMWMSYLGPMQ HVNLASAPLLEQVMRQEGKYPVRNDMELWKEHRDQHDLTGYGPFTEGHHWY QLRQALNQRLKPAEAALYTDAFNEVIDDFMTRLD

Product Application Details

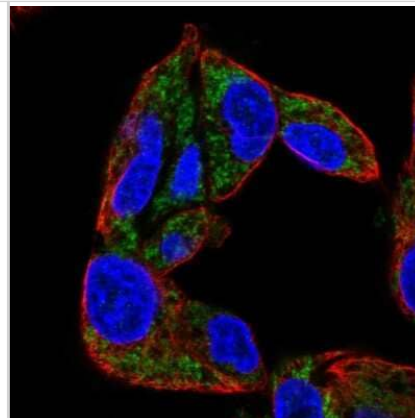
Applications	Western Blot, Immunocytochemistry/ Immunofluorescence, Immunohistochemistry, Immunohistochemistry-Paraffin
Recommended Dilutions	Western Blot 0.04 - 0.4 ug/mL, Immunohistochemistry 1:200 - 1:500, Immunocytochemistry/ Immunofluorescence 0.25 - 2 ug/mL, Immunohistochemistry-Paraffin 1:200 - 1:500
Application Notes	For IHC-Paraffin, HIER pH 6 retrieval is recommended. ICC/IF Fixation Permeabilization: Use PFA/Triton X-100.

Images

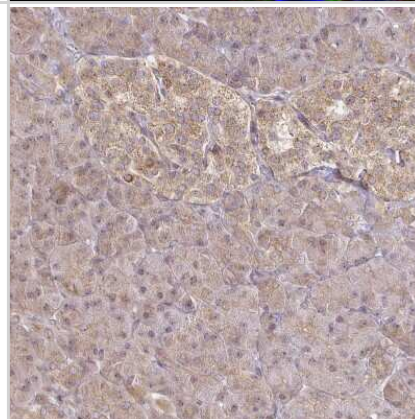
Western Blot: CYP27A1 Antibody [NBP2-32433] - Lane 1: Marker [kDa] 250, 130, 95, 72, 55, 36, 28, 17, 10. Lane 2: Human cell line RT-4. Lane 3: Human cell line U-251MG sp. Lane 4: Human plasma (IgG/HSA depleted). Lane 5: Human liver tissue



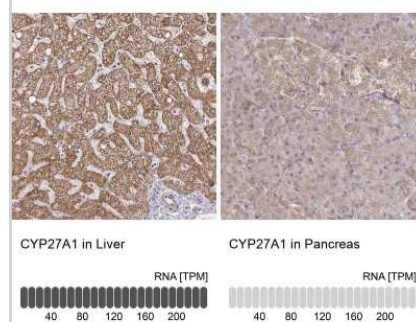
Immunocytochemistry/Immunofluorescence: CYP27A1 Antibody [NBP2-32433] - Staining of human cell line Hep G2 shows localization to mitochondria. Antibody staining is shown in green.



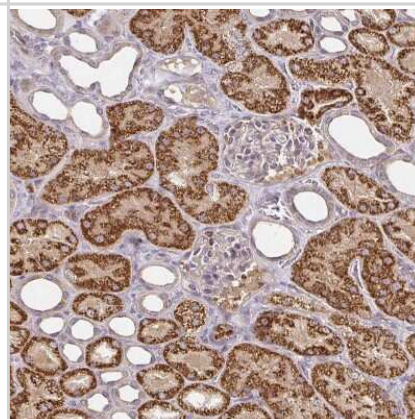
Immunohistochemistry-Paraffin: CYP27A1 Antibody [NBP2-32433] - Staining of human pancreas shows weak cytoplasmic positivity in exocrine glandular cells and in Langerhans islet cells.



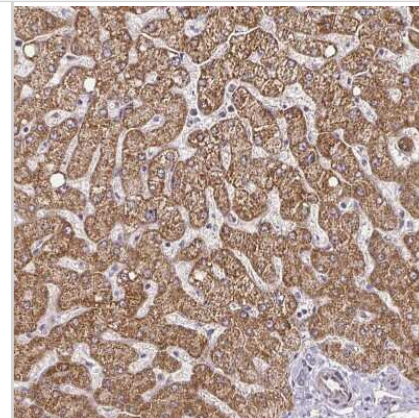
Immunohistochemistry-Paraffin: CYP27A1 Antibody [NBP2-32433] - Analysis in human liver and pancreas tissues. Corresponding CYP27A1 RNA-seq data are presented for the same tissues.



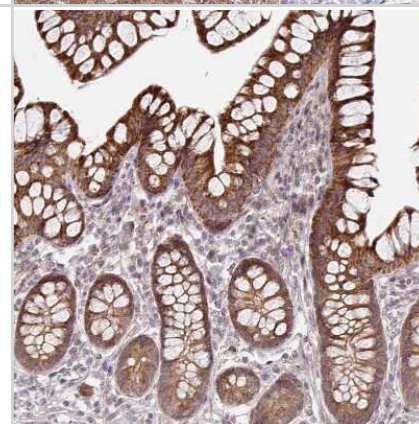
Immunohistochemistry-Paraffin: CYP27A1 Antibody [NBP2-32433] - Staining of human kidney shows strong granular cytoplasmic positivity in cells in tubules.



Immunohistochemistry-Paraffin: CYP27A1 Antibody [NBP2-32433] - Staining of human liver shows strong granular cytoplasmic positivity in hepatocytes.



Immunohistochemistry-Paraffin: CYP27A1 Antibody [NBP2-32433] - Staining of human small intestine shows strong granular cytoplasmic positivity in glandular cells.





Novus Biologicals USA

10730 E. Briarwood Avenue
Centennial, CO 80112
USA
Phone: 303.730.1950
Toll Free: 1.888.506.6887
Fax: 303.730.1966
nb-customerservice@bio-techne.com

Bio-Techne Canada

21 Canmotor Ave
Toronto, ON M8Z 4E6
Canada
Phone: 905.827.6400
Toll Free: 855.668.8722
Fax: 905.827.6402
canada.inquires@bio-techne.com

Bio-Techne Ltd

19 Barton Lane
Abingdon Science Park
Abingdon, OX14 3NB, United Kingdom
Phone: (44) (0) 1235 529449
Free Phone: 0800 37 34 15
Fax: (44) (0) 1235 533420
info.EMEA@bio-techne.com

General Contact Information

www.novusbio.com
Technical Support: nb-technical@bio-techne.com
Orders: nb-customerservice@bio-techne.com
General: novus@novusbio.com

Products Related to NBP2-32433

NBP2-32433PEP	CYP27A1 Recombinant Protein Antigen
HAF008	Goat anti-Rabbit IgG Secondary Antibody [HRP]
NB7160	Goat anti-Rabbit IgG (H+L) Secondary Antibody [HRP]
NBP2-24891	Rabbit IgG Isotype Control

Limitations

This product is for research use only and is not approved for use in humans or in clinical diagnosis. Primary Antibodies are guaranteed for 1 year from date of receipt.

For more information on our 100% guarantee, please visit www.novusbio.com/guarantee

Earn gift cards/discounts by submitting a review: www.novusbio.com/reviews/submit/NBP2-32433

Earn gift cards/discounts by submitting a publication using this product:
www.novusbio.com/publications

