

Product Datasheet

Bcl-6 Antibody - BSA Free NBP2-31369

Unit Size: 0.1 mg

Store at 4C short term. Aliquot and store at -20C long term. Avoid freeze-thaw cycles.

www.novusbio.com



technical@novusbio.com

Protocols, Publications, Related Products, Reviews, Research Tools and Images at:
www.novusbio.com/NBP2-31369

Updated 9/9/2025 v.20.1

Earn rewards for product
reviews and publications.

Submit a publication at www.novusbio.com/publications

Submit a review at www.novusbio.com/reviews/destination/NBP2-31369



NBP2-31369

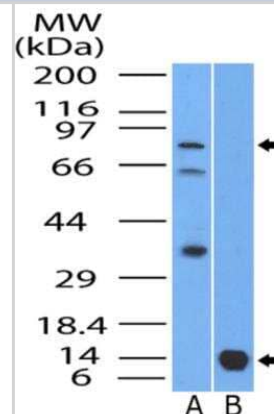
Bcl-6 Antibody - BSA Free

Product Information	
Unit Size	0.1 mg
Concentration	1.0 mg/ml
Storage	Store at 4C short term. Aliquot and store at -20C long term. Avoid freeze-thaw cycles.
Clonality	Polyclonal
Preservative	0.05% Sodium Azide
Isotype	IgG
Purity	Protein A purified
Buffer	PBS
Target Molecular Weight	78.9 kDa
Product Description	
Description	Novus Biologicals Rabbit Bcl-6 Antibody - BSA Free (NBP2-31369) is a polyclonal antibody validated for use in IHC and WB. All Novus Biologicals antibodies are covered by our 100% guarantee.
Host	Rabbit
Gene ID	604
Gene Symbol	BCL6
Species	Human
Reactivity Notes	Chicken (76%).
Immunogen	Bcl6
Product Application Details	
Applications	Western Blot, Immunohistochemistry-Paraffin, Immunohistochemistry
Recommended Dilutions	Western Blot 2 ug/ml, Immunohistochemistry 5 ug/ml, Immunohistochemistry-Paraffin 5 ug/ml
Application Notes	The observed molecular weight of the protein may vary from the listed predicted molecular weight due to post translational modifications, post translation cleavages, relative charges, and other experimental factors.

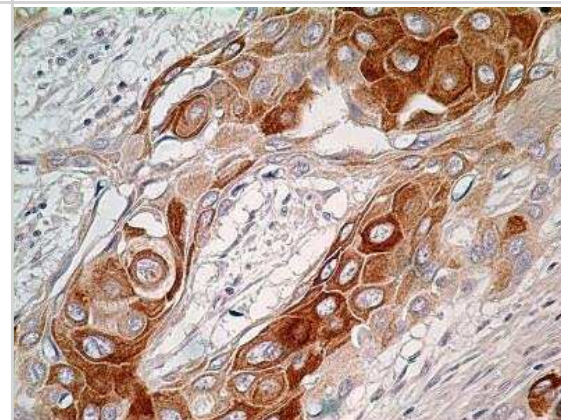


Images

Western Blot: Bcl6 Antibody [NBP2-31369] - WB detection of B-cell lymphoma 6 / Bcl6 protein in (A) lysate of Ramos /human Burkitt's lymphoma cell line and (B) partial recombinant protein using Bcl6 antibody at a concentration of: 2ug/ml for lysate, and 0.5ug/ml for recombinant protein. In Ramos cells, this antibody detected a specific band below ~80 kDa (predicted size 78.9 kDa) and two additional bands ~60kDa/35kDa which are potentially the polyubiquitination degradation fragments of this protein.



Immunohistochemistry-Paraffin: Bcl6 Antibody [NBP2-31369] - IHC analysis of formalin-fixed paraffin-embedded tissue section of human esophageal squamous cell carcinoma (SCC) using Bcl6 antibody at a concentration of 5 ug/ml. Nuclear as well as cytoplasmic immunoreactivity was observed for Bcl6 protein in SCC cells whereas the tumor stroma cells did not develop DAB staining. [40X Magnification]





Novus Biologicals USA

10730 E. Briarwood Avenue
Centennial, CO 80112
USA
Phone: 303.730.1950
Toll Free: 1.888.506.6887
Fax: 303.730.1966
nb-customerservice@bio-techne.com

Bio-Techne Canada

21 Canmotor Ave
Toronto, ON M8Z 4E6
Canada
Phone: 905.827.6400
Toll Free: 855.668.8722
Fax: 905.827.6402
canada.inquires@bio-techne.com

Bio-Techne Ltd

19 Barton Lane
Abingdon Science Park
Abingdon, OX14 3NB, United Kingdom
Phone: (44) (0) 1235 529449
Free Phone: 0800 37 34 15
Fax: (44) (0) 1235 533420
info.EMEA@bio-techne.com

General Contact Information

www.novusbio.com
Technical Support: nb-technical@bio-techne.com
Orders: nb-customerservice@bio-techne.com
General: novus@novusbio.com

Products Related to NBP2-31369

HAF008	Goat anti-Rabbit IgG Secondary Antibody [HRP]
NB7160	Goat anti-Rabbit IgG (H+L) Secondary Antibody [HRP]
NBP2-24891	Rabbit IgG Isotype Control
H00000604-Q01-10ug	Recombinant Human Bcl-6 GST (N-Term) Protein

Limitations

This product is for research use only and is not approved for use in humans or in clinical diagnosis. Primary Antibodies are guaranteed for 1 year from date of receipt.

For more information on our 100% guarantee, please visit www.novusbio.com/guarantee

Earn gift cards/discounts by submitting a review: www.novusbio.com/reviews/submit/NBP2-31369

Earn gift cards/discounts by submitting a publication using this product:
www.novusbio.com/publications

