

# Product Datasheet

## INSTA-Blot Multi-species Skeletal Muscle, Heart and Kidney Tissues NBP2-30116

Unit Size: 1 Membrane

Store at room temperature.

[www.novusbio.com](http://www.novusbio.com)



[technical@novusbio.com](mailto:technical@novusbio.com)

Protocols, Publications, Related Products, Reviews, Research Tools and Images at:  
[www.novusbio.com/NBP2-30116](http://www.novusbio.com/NBP2-30116)

Updated 10/23/2024 v.20.1

Earn rewards for product  
reviews and publications.

Submit a publication at [www.novusbio.com/publications](http://www.novusbio.com/publications)

Submit a review at [www.novusbio.com/reviews/destination/NBP2-30116](http://www.novusbio.com/reviews/destination/NBP2-30116)



**NBP2-30116****INSTA-Blot Multi-species Skeletal Muscle, Heart and Kidney Tissues****Product Information**

<b>Unit Size</b>	1 Membrane
<b>Concentration</b>	Concentration is not relevant for this product. Please see the protocols for proper use of this product.
<b>Storage</b>	Store at room temperature.

**Product Description**

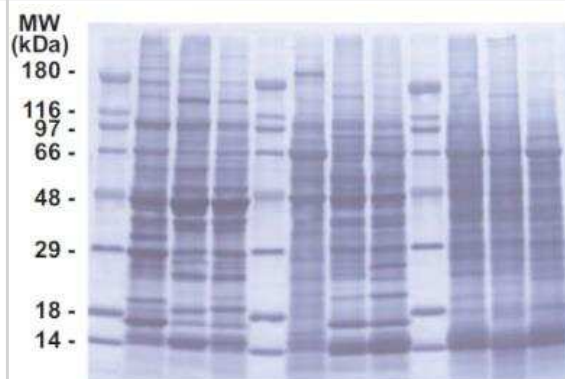
<b>Description</b>	Please see online datasheet for lane details: <a href="http://www.novusbio.com/NBP2-30116">www.novusbio.com/NBP2-30116</a>
<b>Preparation Method</b>	INSTA-Blot™ Multi-species Skeletal Muscle, Heart, Kidney Tissue Lysate NBP2-30116 contains denatured proteins from tissue lysates loaded at 20 ug (total protein, Bradford Assay) per lane on a 4- 20% Tris-Glycine mini gel. After resolution by SDS-PAGE at 125V for 1 hour the proteins are electro-blotted for 2 hours at 25V onto a PVDF membrane. The membrane is stained with amido black for visualization of proteins, dried and packaged under anoxic conditions. The INSTA-Blot™ is provided ready-to-use in your western blot protocol.

**Product Application Details**

<b>Application Notes</b>	Human tissues are from donors with no known disease. Mouse tissues are from Balb/c mice. Rat tissues are from Sprague Dawley rats. Tissues are lysed in lysis buffer (10 mM Tris, pH 8.0, 130 mM NaCl, 1% Triton X-100, 10 mM NaF, 10 mM NaPi, 10 mM NaPPi) containing Protease Inhibitor Cocktail (PIC) and PMSF. Prior to SDS-PAGE the tissue lysate is resuspended 1:1 with 2X SDS sample buffer (120 mM Tris-Hcl [pH 6.8], 20 mM EDTA, 4% SDS, 0.06% Bromophenol Blue, 20% glycerol, 0.4% b-mercaptoethanol).
--------------------------	---

**Images**

SDS-Page: INSTA-Blot Multi-species Skeletal Muscle, Heart and Kidney Tissues [NBP2-30116] - Approximately 20 ug per lane of tissue lysates are resolved by SDS-PAGE, transferred onto PVDF membrane and stained with amido black. Lanes: 1. Molecular weight marker; 2. human skeletal muscle; 3. mouse skeletal muscle; 4. rat skeletal muscle; 5. Molecular weight marker; 6. human heart; 7. mouse heart; 8. rat heart; 9. Molecular weight marker; 10. human kidney; 11. mouse kidney; 12. rat kidney.



## Procedures

### MSDS for Non Hazardous Product (NBP2-30116)

INSTA-Blot Multi-species Skeletal Muscle, Heart and Kidney Tissues:

Material Safety Data Sheet for Non Hazardous Products

#### Hazard Information

Chemical Name: Non hazardous products.

Chemical Formula: N/A

CAS Number: N/A

EEC-No: N/A

#### Hazard Identification

None

#### First Aid Measures

Eye Contact: None

Skin Contact: None

Inhalation: None

Ingestion: None

#### Accidental Release Measures

This product either does not contain hazardous constituents or the concentration of all chemical constituents are below the regulatory threshold limits described by Occupational Safety Health Administration Hazard Communication Standard 29 CFR 1910.1200 and the European Directive 91/155/EEC. 88/379/EEC, and 67/546/EEC.

#### Handling and Storage

Exposure Controls / Personal Protection

Other Precautions: None

#### Physical and Chemical Properties

Form: N/A

Color: N/A

Odor: N/A

Melting Point: N/A

Boiling Temperature: N/A

Density: N/A

Vapor Pressure: N/A

Solubility in Water: N/A

Flash Point: N/A

Explosion limits: N/A

Ignition Temperature: N/A





### **Novus Biologicals USA**

10730 E. Briarwood Avenue  
Centennial, CO 80112  
USA  
Phone: 303.730.1950  
Toll Free: 1.888.506.6887  
Fax: 303.730.1966  
nb-customerservice@bio-techne.com

### **Bio-Techne Canada**

21 Canmotor Ave  
Toronto, ON M8Z 4E6  
Canada  
Phone: 905.827.6400  
Toll Free: 855.668.8722  
Fax: 905.827.6402  
canada.inquires@bio-techne.com

### **Bio-Techne Ltd**

19 Barton Lane  
Abingdon Science Park  
Abingdon, OX14 3NB, United Kingdom  
Phone: (44) (0) 1235 529449  
Free Phone: 0800 37 34 15  
Fax: (44) (0) 1235 533420  
info.EMEA@bio-techne.com

### **General Contact Information**

www.novusbio.com  
Technical Support: nb-technical@bio-  
techne.com  
Orders: nb-customerservice@bio-techne.com  
General: novus@novusbio.com

### **Limitations**

This product is for research use only and is not approved for use in humans or in clinical diagnosis. Western Blot Membranes are guaranteed for 1 year from date of receipt.

For more information on our 100% guarantee, please visit [www.novusbio.com/guarantee](http://www.novusbio.com/guarantee)

Earn gift cards/discounts by submitting a review: [www.novusbio.com/reviews/submit/NBP2-30116](http://www.novusbio.com/reviews/submit/NBP2-30116)

Earn gift cards/discounts by submitting a publication using this product:  
[www.novusbio.com/publications](http://www.novusbio.com/publications)

