

Product Datasheet

Bcl-2 Antibody - BSA Free NBP2-30108-0.1mg

Unit Size: 0.1 mg

Store at 4C short term. Aliquot and store at -20C long term. Avoid freeze-thaw cycles.

www.novusbio.com



technical@novusbio.com

Protocols, Publications, Related Products, Reviews, Research Tools and Images at:
www.novusbio.com/NBP2-30108

Updated 10/23/2024 v.20.1

Earn rewards for product
reviews and publications.

Submit a publication at www.novusbio.com/publications

Submit a review at www.novusbio.com/reviews/destination/NBP2-30108



NBP2-30108-0.1mg

Bcl-2 Antibody - BSA Free

Product Information

Unit Size	0.1 mg
Concentration	1 mg/ml
Storage	Store at 4C short term. Aliquot and store at -20C long term. Avoid freeze-thaw cycles.
Clonality	Polyclonal
Preservative	0.02% Sodium Azide
Isotype	IgG
Purity	Peptide affinity purified
Buffer	PBS
Target Molecular Weight	26 kDa

Product Description

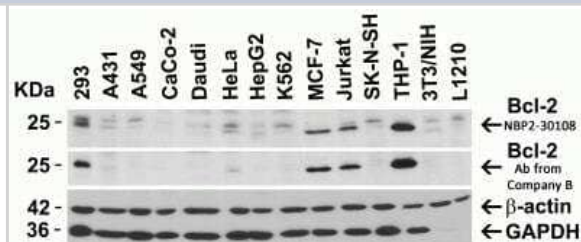
Host	Rabbit
Gene ID	596
Gene Symbol	BCL2
Species	Human, Mouse
Specificity/Sensitivity	Human Bcl-2 has 2 isoforms, including isoform 1 (239aa, 26kD), and isoform 2 (205aa, 22kD). Mouse Bcl-2 has 2 isoforms, including isoform 1 (236aa, 26kD), and isoform 2 (199aa, 22kD). Rat Bcl-2 has one isoform (236aa, 27kD). NBP2-30108 can detect all isoforms of human, mouse and rat.
Immunogen	Antibody was raised against a peptide corresponding to 15 amino acids near the N terminus of human Bcl-2. The immunogen is located within the first 50 amino acids of Bcl-2. Amino Acid Sequence: KYIHYKLSQRGYEWD

Product Application Details

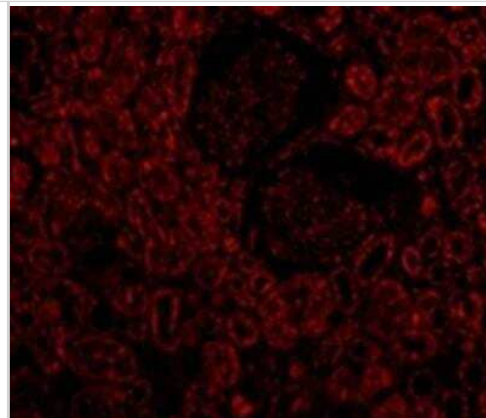
Applications	Western Blot, ELISA, Immunocytochemistry/ Immunofluorescence, Immunohistochemistry, Immunohistochemistry-Paraffin
Recommended Dilutions	Western Blot 1-2ug/ml, ELISA, Immunohistochemistry, Immunocytochemistry/ Immunofluorescence 10ug/ml, Immunohistochemistry-Paraffin 2ug/ml

Images

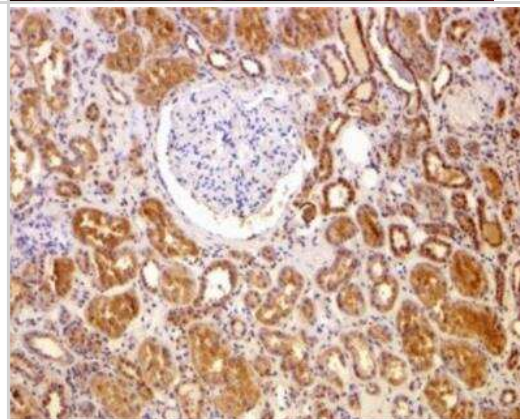
Western Blot: Bcl-2 Antibody [NBP2-30108] - Independent Antibody Validation (IAV) via Protein Expression Profile in Cell Lines. Loading: 15 ug of lysates per lane. Antibodies: Bcl-2 NBP2-30108, (2 ug/mL), Bcl-2 from Company B, (2 ug/mL), beta-actin (1 ug/mL) and GAPDH (0.02 ug/mL), 1h incubation at RT in 5% NFDN/TBST. Secondary: Goat anti-rabbit IgG HRP conjugate at 1:10000 dilution.



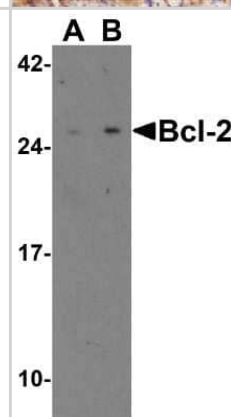
Immunocytochemistry/Immunofluorescence: Bcl-2 Antibody [NBP2-30108] - Immunofluorescence Validation of Bcl-2 in Human Kidney Cells. Immunofluorescent analysis of 4% paraformaldehyde-fixed Human Kidney Cells labeling Bcl-2 with NBP2-30108 at 10 ug/mL, followed by goat anti-rabbit IgG secondary antibody at 1/500 dilution (red).



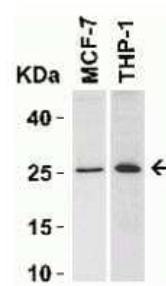
Immunohistochemistry-Paraffin: Bcl-2 Antibody [NBP2-30108] - Immunohistochemistry Validation of Bcl-2 in Human Kidney. Immunohistochemical analysis of paraffin-embedded Human Kidney using anti-Bcl-2 antibody (NBP2-30108) at 2ug/ml. Tissue was fixed with formaldehyde and blocked with 10% serum for 1 h at RT; antigen retrieval was by heat mediation with a citrate buffer (pH6). Samples were incubated with primary antibody overnight at 4C. A goat anti-rabbit IgG H&L (HRP) at 1/250 was used as secondary. Counter stained with Hematoxylin.



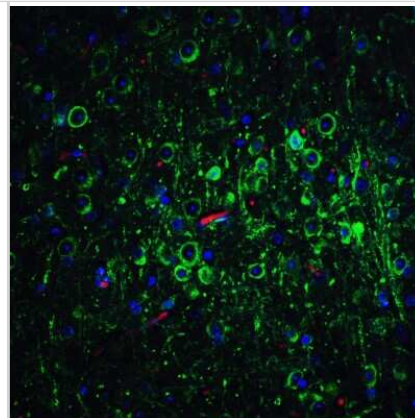
Western Blot: Bcl-2 Antibody [NBP2-30108] - Western Blot Validation in Human and Mouse Cell Lines. Loading: 15 ug of lysates per lane. Antibodies: Bcl-2 NBP2-30108, (2 ug/mL), 1h incubation at RT in 5% NFDM/TBST. Secondary: Goat anti-rabbit IgG HRP conjugate at 1:10000 dilution. Lane A: Human Daudi cells Lane B: Mouse A-20 cells



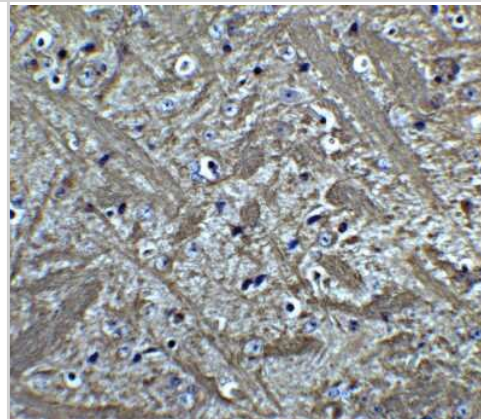
Western Blot: Bcl-2 Antibody [NBP2-30108] - Western Blot Validation in Human Cell Lines. Loading: 15 ug of lysates per lane. Antibodies: Bcl-2 NBP2-30108, (2 ug/mL), 1h incubation at RT in 5% NFDM/TBST. Secondary: Goat anti-rabbit IgG HRP conjugate at 1:10000 dilution.



Immunocytochemistry/Immunofluorescence: Bcl-2 Antibody [NBP2-30108] - Immunofluorescence Validation of Bcl-2 in Mouse Brain Tissue. Immunofluorescent analysis of 4% paraformaldehyde-fixed Mouse Brain Tissue labeling Bcl-2 with NBP2-30108 at 20 ug/mL, followed by goat anti-rabbit IgG secondary antibody at 1/500 dilution (green).



Immunohistochemistry-Paraffin: Bcl-2 Antibody [NBP2-30108] - Immunohistochemistry Validation of Bcl-2 in Mouse Brain Tissue. Immunohistochemical analysis of paraffin-embedded Mouse Brain Tissue using anti-Bcl-2 antibody (NBP2-30108) at 5 ug/ml. Tissue was fixed with formaldehyde and blocked with 10% serum for 1 h at RT; antigen retrieval was by heat mediation with a citrate buffer (pH6). Samples were incubated with primary antibody overnight at 4C. A goat anti-rabbit IgG H&L (HRP) at 1/250 was used as secondary. Counter stained with Hematoxylin.





Novus Biologicals USA

10730 E. Briarwood Avenue
Centennial, CO 80112
USA
Phone: 303.730.1950
Toll Free: 1.888.506.6887
Fax: 303.730.1966
nb-customerservice@bio-techne.com

Bio-Techne Canada

21 Canmotor Ave
Toronto, ON M8Z 4E6
Canada
Phone: 905.827.6400
Toll Free: 855.668.8722
Fax: 905.827.6402
canada.inquires@bio-techne.com

Bio-Techne Ltd

19 Barton Lane
Abingdon Science Park
Abingdon, OX14 3NB, United Kingdom
Phone: (44) (0) 1235 529449
Free Phone: 0800 37 34 15
Fax: (44) (0) 1235 533420
info.EMEA@bio-techne.com

General Contact Information

www.novusbio.com
Technical Support: nb-technical@bio-techne.com
Orders: nb-customerservice@bio-techne.com
General: novus@novusbio.com

Products Related to NBP2-30108-0.1mg

HAF008	Goat anti-Rabbit IgG Secondary Antibody [HRP]
NB7160	Goat anti-Rabbit IgG (H+L) Secondary Antibody [HRP]
NBP2-24891	Rabbit IgG Isotype Control
NBP2-34889-100ug	Recombinant Human Bcl-2 Protein

Limitations

This product is for research use only and is not approved for use in humans or in clinical diagnosis. Primary Antibodies are guaranteed for 1 year from date of receipt.

For more information on our 100% guarantee, please visit www.novusbio.com/guarantee

Earn gift cards/discounts by submitting a review: www.novusbio.com/reviews/submit/NBP2-30108

Earn gift cards/discounts by submitting a publication using this product:
www.novusbio.com/publications

