

Product Datasheet

ARF1 Antibody NBP2-29906

Unit Size: 100ug

Store at -20C. Avoid freeze-thaw cycles.

www.novusbio.com



technical@novusbio.com

Publications: 2

Protocols, Publications, Related Products, Reviews, Research Tools and Images at:
www.novusbio.com/NBP2-29906

Updated 10/23/2024 v.20.1

Earn rewards for product
reviews and publications.

Submit a publication at www.novusbio.com/publications

Submit a review at www.novusbio.com/reviews/destination/NBP2-29906



NBP2-29906**ARF1 Antibody****Product Information**

Unit Size	100ug
Concentration	1 mg/ml
Storage	Store at -20C. Avoid freeze-thaw cycles.
Clonality	Polyclonal
Preservative	0.05% Sodium Azide
Isotype	IgG
Purity	Immunogen affinity purified
Buffer	PBS with 1 mg/ml BSA and 30% glycerol

Product Description

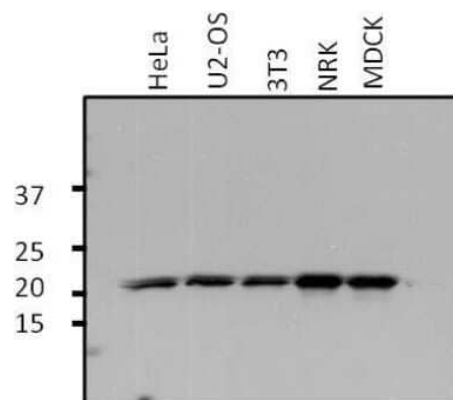
Host	Rabbit
Gene ID	375
Gene Symbol	ARF1
Species	Human, Mouse, Canine
Immunogen	Synthetic peptide DWLSNQLRNQK

Product Application Details

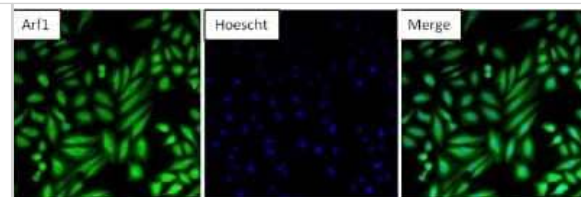
Applications	Western Blot, Immunocytochemistry/ Immunofluorescence, Immunohistochemistry, Immunohistochemistry-Paraffin, Immunoprecipitation
Recommended Dilutions	Western Blot 1:1000 - 1:2000, Immunohistochemistry 1:10 - 1:100, Immunocytochemistry/ Immunofluorescence 1:100 - 1:200, Immunoprecipitation 2 ug, Immunohistochemistry-Paraffin 1:10 - 1:100
Application Notes	Successful WB usage in human, mouse, and canine samples. Successful IF and IP usage in human samples.

Images

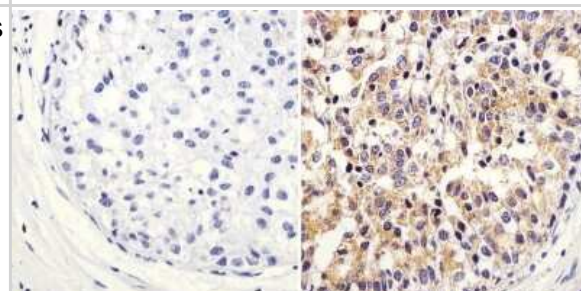
Western Blot: ARF1 Antibody [NBP2-29906] - Analysis of 25ug of various whole cell lysates per well onto a 4-20% Tris-HCl polyacrylamide gel.



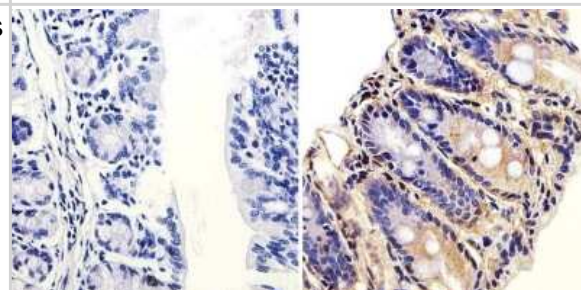
Immunocytochemistry/Immunofluorescence: ARF1 Antibody [NBP2-29906] - Analysis of Arf1 in HeLa cells. Formalin-fixed cells were permeabilized with 0.1% Triton X-100 in TBS for 10 minutes at room temperature and blocked with 5% normal goat serum for 15 minutes at room temperature. Cells were probed with an Arf1 polyclonal antibody at a dilution of 1:100 for at least 1 hour at room temperature, washed with PBS, and incubated with a DyLight 488-conjugated goat anti-rabbit IgG secondary antibody at a dilution of 1:400 for 30 minutes at room temperature. Nuclei (blue) were stained with Hoechst 33342 dye.



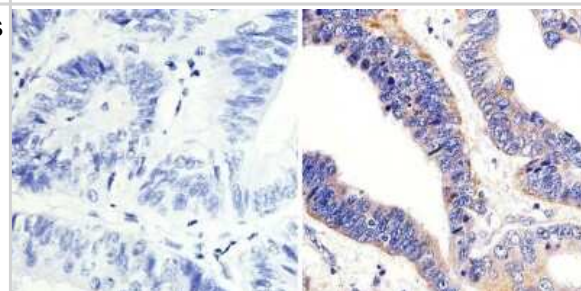
Immunohistochemistry-Paraffin: ARF1 Antibody [NBP2-29906] - Analysis showing staining in the cytoplasm of human breast carcinoma (right) compared to a negative control without primary antibody (left).



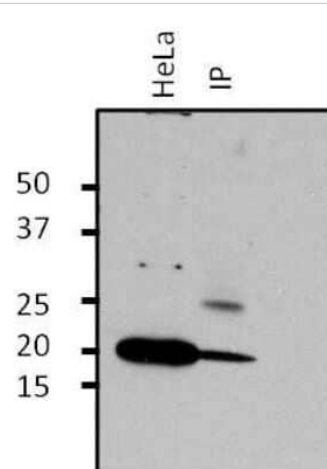
Immunohistochemistry-Paraffin: ARF1 Antibody [NBP2-29906] - Analysis showing staining in the cytoplasm of mouse colon tissue (right) compared to a negative control without primary antibody (left).



Immunohistochemistry-Paraffin: ARF1 Antibody [NBP2-29906] - Analysis of showing staining in the cytoplasm of human colon carcinoma (right) compared to a negative control without primary antibody (left).



Immunoprecipitation: ARF1 Antibody [NBP2-29906] - Analysis of Arf1 was performed on HeLa cells. Antigen-antibody complexes were formed by incubating 500ug of HeLa whole cell lysate with 2ug of an Arf1 polyclonal antibody overnight on a rocking platform at 4C. The immune complexes were captured on 50ul Protein A/G Plus Agarose, washed extensively, and eluted with 5X Lane Marker Reducing Sample Buffer. Samples, including the HeLa cell lysate as a positive control (left lane), were resolved on a 4-20% Tris-HCl polyacrylamide gel, transferred to a nitrocellulose membrane, and blocked with 5% BSA/TBS-0.1%Tween for at least 1 hour. The membrane was probed with a Arf1 polyclonal antibody at a dilution of 1:1000 overnight rotating at 4C, washed in TBST, and probed with Clean-blot IP detection reagent at a dilution of 1:2500 for at least 1 hour. Chemiluminescent detection was performed using SuperSignal West Dura.



Publications

Khalid E Guanine-Nucleotide Binding Proteins, Tyrosine Kinases, and Associated Regulators in the Integrated Control of Basal and GnRH-Dependent Goldfish Pituitary Hormone Secretion Thesis 2023-01-01

Khalid E, Chang JP Small GTPase control of pituitary hormone secretion: Evidence from studies in the goldfish (*Carassius auratus*) neuroendocrine model General and comparative endocrinology 2023-04-13 [PMID: 37060929]



Novus Biologicals USA

10730 E. Briarwood Avenue
Centennial, CO 80112
USA
Phone: 303.730.1950
Toll Free: 1.888.506.6887
Fax: 303.730.1966
nb-customerservice@bio-techne.com

Bio-Techne Canada

21 Canmotor Ave
Toronto, ON M8Z 4E6
Canada
Phone: 905.827.6400
Toll Free: 855.668.8722
Fax: 905.827.6402
canada.inquires@bio-techne.com

Bio-Techne Ltd

19 Barton Lane
Abingdon Science Park
Abingdon, OX14 3NB, United Kingdom
Phone: (44) (0) 1235 529449
Free Phone: 0800 37 34 15
Fax: (44) (0) 1235 533420
info.EMEA@bio-techne.com

General Contact Information

www.novusbio.com
Technical Support: nb-technical@bio-techne.com
Orders: nb-customerservice@bio-techne.com
General: novus@novusbio.com

Products Related to NBP2-29906

HAF008	Goat anti-Rabbit IgG Secondary Antibody [HRP]
NB7160	Goat anti-Rabbit IgG (H+L) Secondary Antibody [HRP]
NBP2-24891	Rabbit IgG Isotype Control
NBP1-45297-0.1mg	Recombinant Human ARF1 His Protein

Limitations

This product is for research use only and is not approved for use in humans or in clinical diagnosis. Primary Antibodies are guaranteed for 1 year from date of receipt.

For more information on our 100% guarantee, please visit www.novusbio.com/guarantee

Earn gift cards/discounts by submitting a review: www.novusbio.com/reviews/submit/NBP2-29906

Earn gift cards/discounts by submitting a publication using this product:
www.novusbio.com/publications

