

# Product Datasheet

## CRMP1 Antibody (Y21)

### NBP2-29855

Unit Size: 0.1 ml

Aliquot and store at -20C or -80C. Avoid freeze-thaw cycles.

[www.novusbio.com](http://www.novusbio.com)



[technical@novusbio.com](mailto:technical@novusbio.com)

Protocols, Publications, Related Products, Reviews, Research Tools and Images at:  
[www.novusbio.com/NBP2-29855](http://www.novusbio.com/NBP2-29855)

Updated 5/13/2021 v.20.1

Earn rewards for product  
reviews and publications.

Submit a publication at [www.novusbio.com/publications](http://www.novusbio.com/publications)

Submit a review at [www.novusbio.com/reviews/destination/NBP2-29855](http://www.novusbio.com/reviews/destination/NBP2-29855)



**NBP2-29855****CRMP1 Antibody (Y21)**

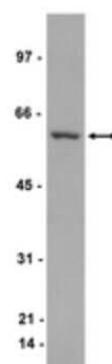
| <b>Product Information</b> |  |
|----------------------------|--|
| <b>Unit Size</b>           | 0.1 ml   |
| <b>Concentration</b>       | This product is unpurified. The exact concentration of antibody is not quantifiable. |
| <b>Storage</b>             | Aliquot and store at -20C or -80C. Avoid freeze-thaw cycles.                         |
| <b>Clonality</b>           | Monoclonal   |
| <b>Clone</b>               | Y21  |
| <b>Preservative</b>        | 0.05% Sodium Azide   |
| <b>Isotype</b>             | IgM Kappa  |
| <b>Purity</b>              | Unpurified   |
| <b>Buffer</b>              | Mouse ascites with 30% Glycerol  |

| <b>Product Description</b>     |  |
|--------------------------------|--|
| <b>Host</b>                    | Mouse  |
| <b>Gene ID</b>                 | 1400   |
| <b>Gene Symbol</b>             | CRMP1  |
| <b>Species</b>                 | Human  |
| <b>Reactivity Notes</b>        | Human  |
| <b>Specificity/Sensitivity</b> | CRMP1<br>60-65kDa weight may be detected.                                      |
| <b>Immunogen</b>               | His6-tagged fusion protein corresponding to amino acids 76-592 of human CRMP1. |
| <b>Notes</b>                   | Relevant Entrez Gene Numbers: NM_001313  |

| <b>Product Application Details</b> |                           |
|------------------------------------|---------------------------|
| <b>Applications</b>                | Western Blot              |
| <b>Recommended Dilutions</b>       | Western Blot 1:100-1:2000 |

**Images**

Western Blot: CRMP1 Antibody (Y21) [NBP2-29855] - CL-1 cell lysate was probed with anti-CRMP1 (1:2000 dilution).





### **Novus Biologicals USA**

10730 E. Briarwood Avenue  
Centennial, CO 80112  
USA  
Phone: 303.730.1950  
Toll Free: 1.888.506.6887  
Fax: 303.730.1966  
nb-customerservice@bio-techne.com

### **Bio-Techne Canada**

21 Canmotor Ave  
Toronto, ON M8Z 4E6  
Canada  
Phone: 905.827.6400  
Toll Free: 855.668.8722  
Fax: 905.827.6402  
canada.inquires@bio-techne.com

### **Bio-Techne Ltd**

19 Barton Lane  
Abingdon Science Park  
Abingdon, OX14 3NB, United Kingdom  
Phone: (44) (0) 1235 529449  
Free Phone: 0800 37 34 15  
Fax: (44) (0) 1235 533420  
info.EMEA@bio-techne.com

### **General Contact Information**

www.novusbio.com  
Technical Support: nb-technical@bio-techne.com  
Orders: nb-customerservice@bio-techne.com  
General: novus@novusbio.com

### **Limitations**

This product is for research use only and is not approved for use in humans or in clinical diagnosis. Primary Antibodies are guaranteed for 1 year from date of receipt.

For more information on our 100% guarantee, please visit [www.novusbio.com/guarantee](http://www.novusbio.com/guarantee)

Earn gift cards/discounts by submitting a review: [www.novusbio.com/reviews/submit/NBP2-29855](http://www.novusbio.com/reviews/submit/NBP2-29855)

Earn gift cards/discounts by submitting a publication using this product:  
[www.novusbio.com/publications](http://www.novusbio.com/publications)

