

Product Datasheet

SHP-1 Antibody (NL213)

NBP2-29830

Unit Size: 0.1 ml

Aliquot and store at -20C or -80C. Avoid freeze-thaw cycles.

www.novusbio.com



technical@novusbio.com

Protocols, Publications, Related Products, Reviews, Research Tools and Images at:
www.novusbio.com/NBP2-29830

Updated 5/13/2021 v.20.1

Earn rewards for product
reviews and publications.

Submit a publication at www.novusbio.com/publications

Submit a review at www.novusbio.com/reviews/destination/NBP2-29830



NBP2-29830

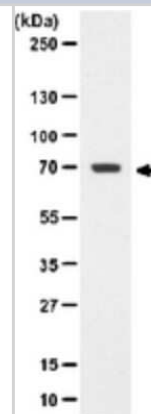
SHP-1 Antibody (NL213)

Product Information	
Unit Size	0.1 ml
Concentration	This product is unpurified. The exact concentration of antibody is not quantifiable.
Storage	Aliquot and store at -20C or -80C. Avoid freeze-thaw cycles.
Clonality	Monoclonal
Clone	NL213
Preservative	0.05% Sodium Azide
Isotype	IgG
Purity	Tissue culture supernatant
Buffer	Tissue culture supernatant
Target Molecular Weight	65 kDa
Product Description	
Host	Rabbit
Gene ID	5777
Gene Symbol	PTPN6
Species	Human, Mouse
Specificity/Sensitivity	SHP-1.
Immunogen	Full-length glutathione transferase SHP-1 fusion protein, purified from bacteria.
Notes	Relevant Entrez Gene Numbers: NM_002831, NM_002834
Product Application Details	
Applications	Western Blot, Immunoprecipitation
Recommended Dilutions	Western Blot 1:100-1:2000, Immunoprecipitation 1:10-1:500

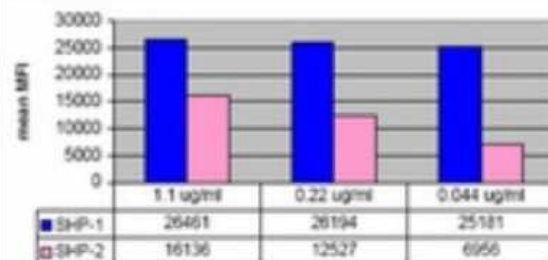


Images

Western Blot: PTPN6 Antibody (NL213) [NBP2-29830] - Non-stimulated A431 cell lysate was resolved by electrophoresis, transferred to nitrocellulose and probed with anti-SHP-1/2 (1:1000 to 1:4000). Proteins were visualized using a goat anti-rabbit secondary antibody conjugated to HRP and a hemiluminescence detection system. Arrow indicates SHP-1/2 (~65 kDa).



Western Blot: PTPN6 Antibody (NL213) [NBP2-29830] - Beadlyte Specificity Assay Representative image from a previous lot. 0.044-1.1ug/mL of this lot was incubated with a cocktail of microspheres conjugated to SHP-1/2 fusion protein. Unbound antibody was then removed by filtration. Bound antibody complexes were detected with a biotin-conjugated anti-rabbit secondary followed by a phycoerythrin-streptavidin conjugate. Fluorescence was read on a Luminex 100 instrument. Median Fluorescence Intensity (MFI) is plotted.





Novus Biologicals USA

10730 E. Briarwood Avenue
Centennial, CO 80112
USA
Phone: 303.730.1950
Toll Free: 1.888.506.6887
Fax: 303.730.1966
nb-customerservice@bio-techne.com

Bio-Techne Canada

21 Canmotor Ave
Toronto, ON M8Z 4E6
Canada
Phone: 905.827.6400
Toll Free: 855.668.8722
Fax: 905.827.6402
canada.inquires@bio-techne.com

Bio-Techne Ltd

19 Barton Lane
Abingdon Science Park
Abingdon, OX14 3NB, United Kingdom
Phone: (44) (0) 1235 529449
Free Phone: 0800 37 34 15
Fax: (44) (0) 1235 533420
info.EMEA@bio-techne.com

General Contact Information

www.novusbio.com
Technical Support: nb-technical@bio-techne.com
Orders: nb-customerservice@bio-techne.com
General: novus@novusbio.com

Limitations

This product is for research use only and is not approved for use in humans or in clinical diagnosis. Primary Antibodies are guaranteed for 1 year from date of receipt.

For more information on our 100% guarantee, please visit www.novusbio.com/guarantee

Earn gift cards/discounts by submitting a review: www.novusbio.com/reviews/submit/NBP2-29830

Earn gift cards/discounts by submitting a publication using this product:
www.novusbio.com/publications

